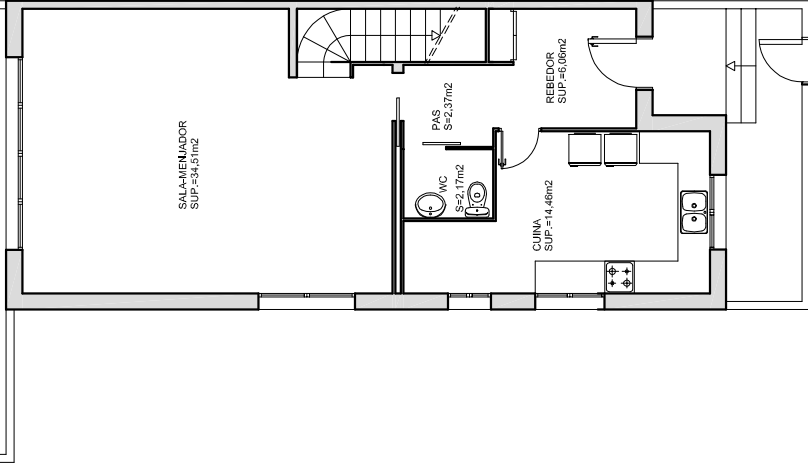
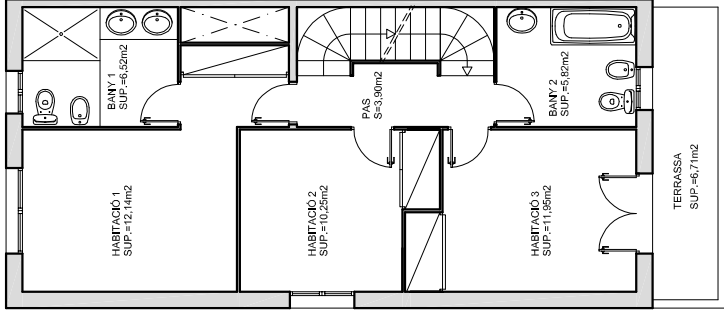


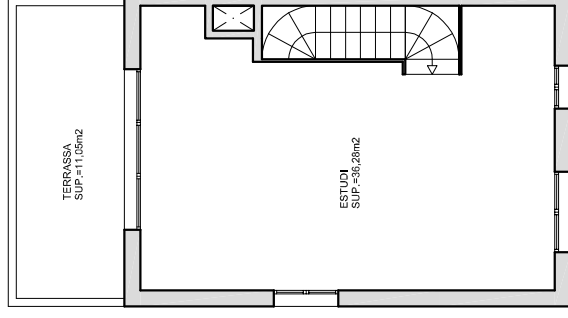
PLANTA SOTERRANI-GARATGE
SUP. CONSTRUÏDA =101,84m²



PLANTA BAIXA
SUP. CONSTRUÏDA =74,23m²



PLANTA PRIMERA
SUP. CONSTRUÏDA =68,76m²



PLANTA SOTACOBERTA
SUP. CONSTRUÏDA=48,12m²