

| PLANTA SOTERRANI | SUP UTIL | SUP CONSTRUIDA |
|-----------------------|----------------------|----------------------|
| TRASTER-SALA MAQUINES | 23,58 m ² | |
| ESCALES | 4,68 m ² | |
| TOTAL SUP. | 28,26 m ² | 33,20 m ² |

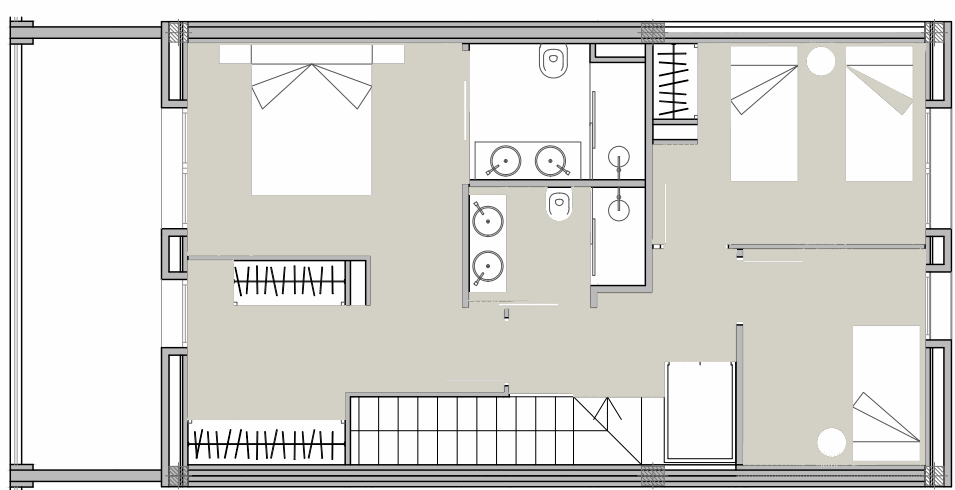
| PLANTA BAIXA | SUP UTIL | SUP CONSTRUIDA |
|-----------------------|----------------------|----------------------|
| S-E, MENJADOR I CUINA | 42,09 m ² | |
| PAS | 3,00 m ² | |
| BANY | 2,88 m ² | |
| ESCALES | 4,56 m ² | |
| REBEDOR | 2,00 m ² | |
| ASCENSOR (previsió) | 1,44 m ² | |
| SUBTOTAL SUP. | 55,97 m ² | 63,73 m ² |
| PORXO (50%) | 9,53 m ² | 4,76 m ² |
| TOTAL SUP. | 65,50 m ² | 68,49 m ² |



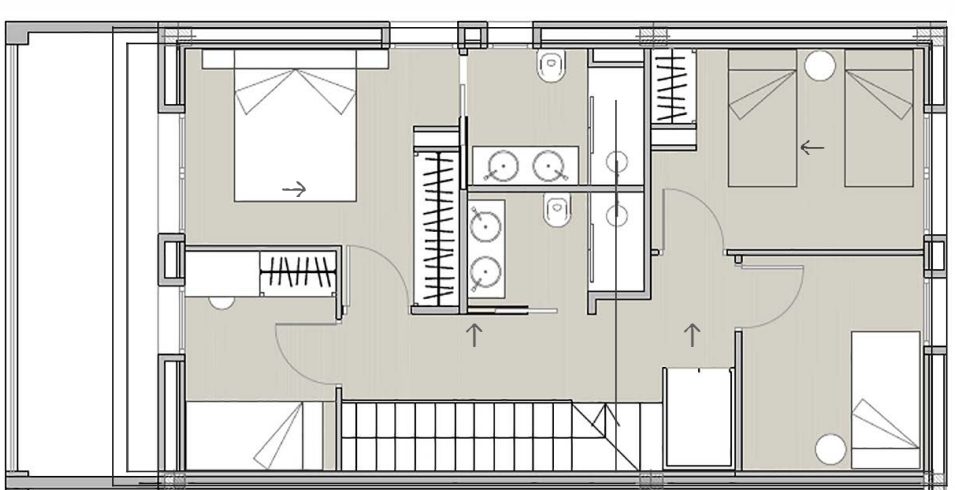
| PLANTA PRIMERA | SUP UTIL | SUP CONSTRUIDA |
|-------------------------|----------------------|----------------------|
| DORMITORI 1 | 13,82 m ² | |
| BANY 1 | 3,96 m ² | |
| BANY 2 | 3,30 m ² | |
| PAS/Previsió ascensor | 5,41 m ² | |
| VESTIDOR | 5,61 m ² | |
| DORMITORI 2 | 9,71 m ² | |
| DORMITORI 3 | 6,47 m ² | |
| SUBTOTAL SUP. | 48,28 m ² | 61,23 m ² |
| TERRASSA (0% sup const) | 10,54 m ² | 0,00 m ² |
| TOTAL SUP. | 58,82 m ² | 61,23 m ² |

| HABITATGE 3 | SUP UTIL | SUP CONSTRUIDA |
|------------------------|-----------------------|-----------------------|
| TOTAL PLANTA SOTERRANI | 28,26 m ² | 33,20 m ² |
| TOTAL PLANTA BAIXA | 65,50 m ² | 68,49 m ² |
| TOTAL PLANTA PRIMERA | 58,82 m ² | 61,23 m ² |
| TOTAL | 152,58 m ² | 162,92 m ² |
| Superfície de jardí | | 82,80 m ² |

OPCIÓN DE 3 DORMITORIOS



OPCIÓN DE 4 DORMITORIOS



OBRA NUEVA
4 VIVIENDAS ADOSADAS
(CASA N°3)

