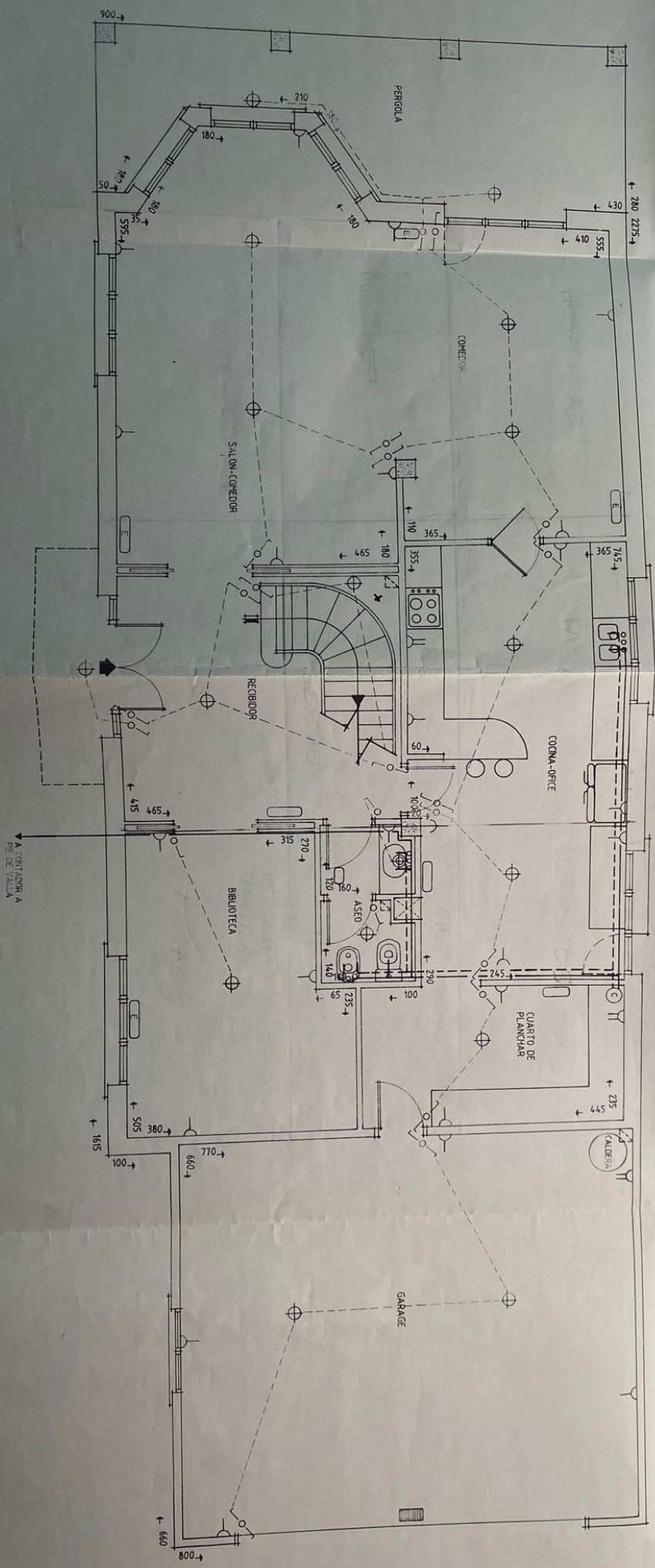




**PLANTA BAJA**  
(COTAS E INSTALACIONES)



NOTA: Se colocará cada 2 metros en cada uno de los ejes.

○	WATER
○	PLUMBING
○	ELECTRICITY
○	HEATING
○	ENGINEERING
○	PLUMBING
○	ELECTRICITY
○	HEATING
○	ENGINEERING
○	PLUMBING
○	ELECTRICITY
○	HEATING
○	ENGINEERING