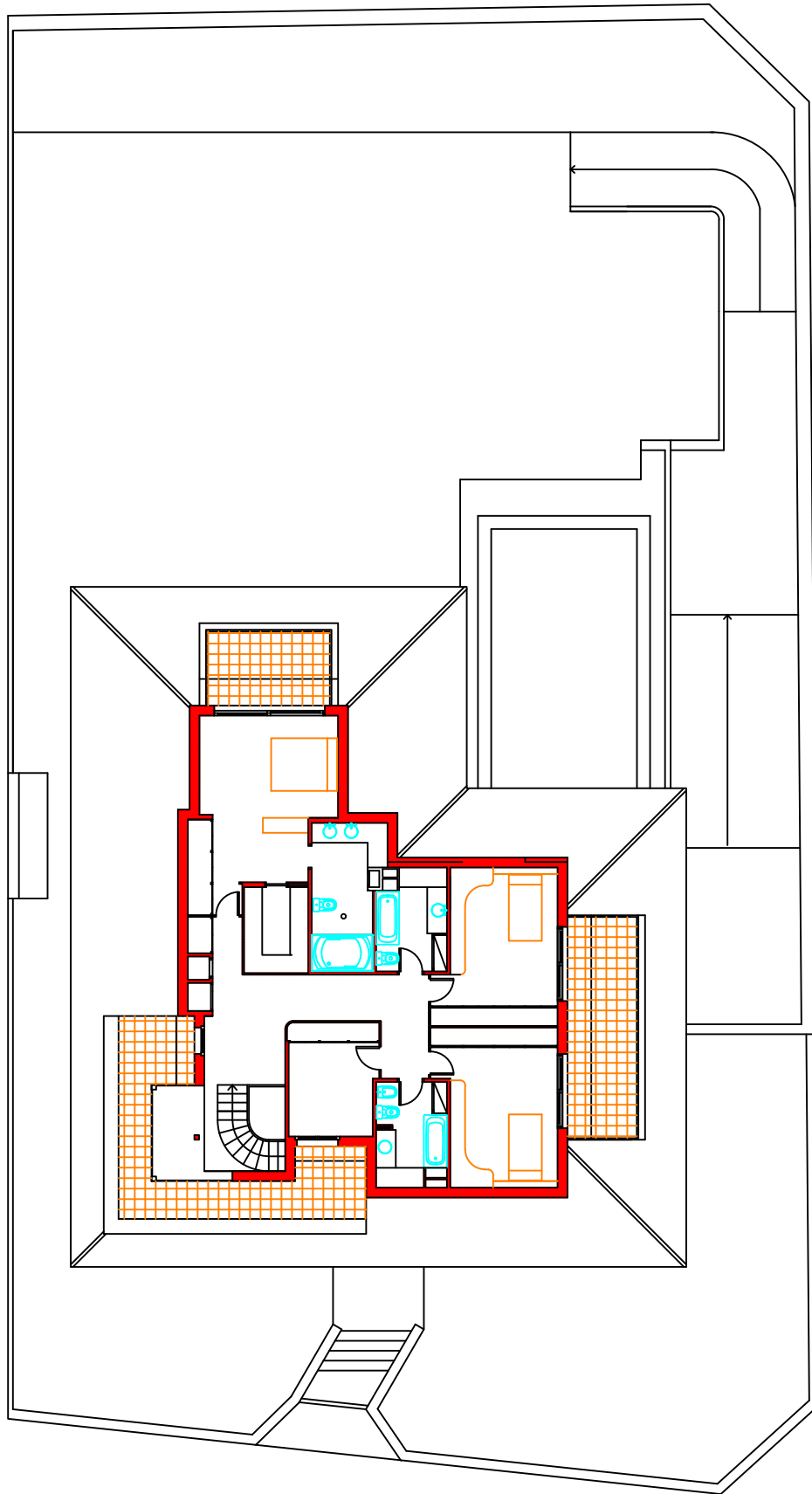


### PLANTA BAJA

Planta Baja = 196,69 m<sup>2</sup>  
50 % Sup terrazas = 73,51 m<sup>2</sup>

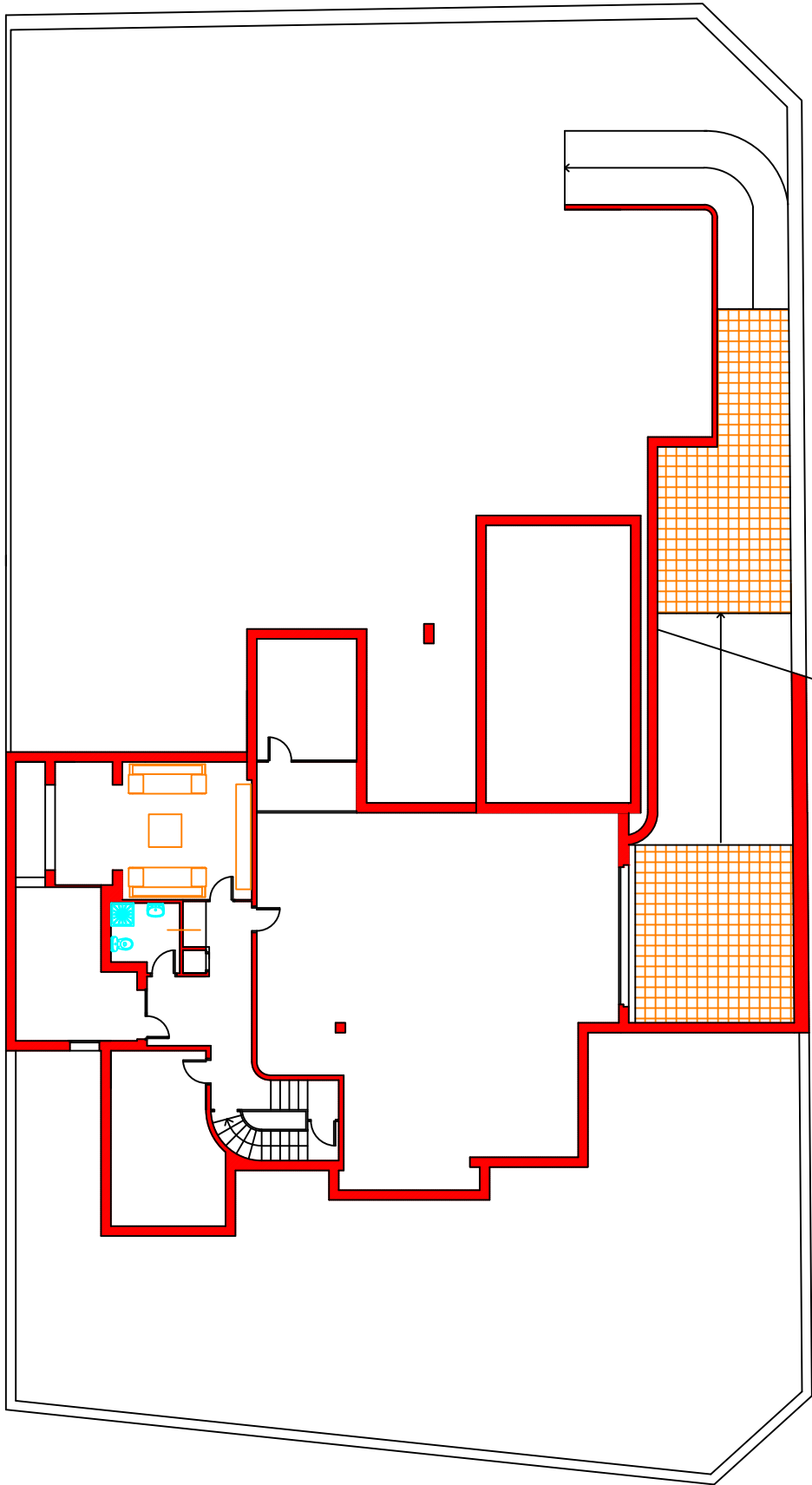
TOTAL SUP. CONSTRUIDA = 270,20 m<sup>2</sup>



### PLANTA PRIMERA

Sup. construida = 144,32 m<sup>2</sup>  
50 % Sup terrazas = 3,64 m<sup>2</sup>

TOTAL SUP. CONSTRUIDA = 147,96 m<sup>2</sup>



PLANTA GARAGE

Sup. construida = 239,95 m<sup>2</sup>

TOTAL SUP. CONSTRUIDA = 239,95 m<sup>2</sup>