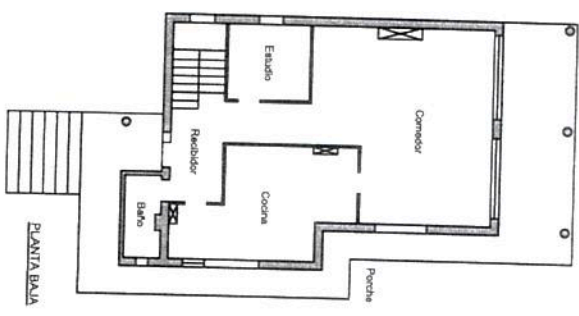
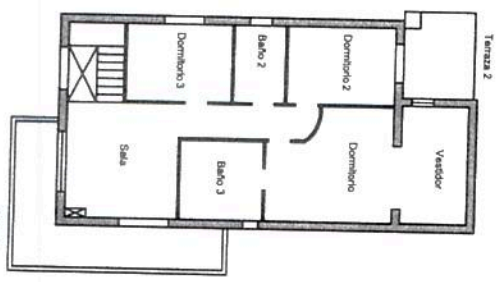


PLANTA SÓTANO



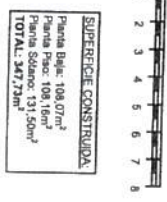
PLANTA BAÑO



PLANTA PISO

**SUPERFICIES ÚTILES:**

Planta Baño
Comedor: 40,71m <sup>2</sup>
Cocina: 24,49m <sup>2</sup>
Baño: 10,30m <sup>2</sup>
Estudio: 8,22m <sup>2</sup>
Recibidor: 12,46m <sup>2</sup>
<b>TOTAL: 86,19m<sup>2</sup></b>
Porche: 50,79m <sup>2</sup>
<b>Planta Piso</b>
Dormitorio: 17,80m <sup>2</sup>
Dormitorio 2: 11,01m <sup>2</sup>
Dormitorio 3: 11,01m <sup>2</sup>
Vestidor: 10,30m <sup>2</sup>
Baño 2: 5,24m <sup>2</sup>
Baño 3: 8,50m <sup>2</sup>
Sala: 22,57m <sup>2</sup>
<b>TOTAL: 86,17m<sup>2</sup></b>
Terraza: 16,98m <sup>2</sup>
Terraza: 7,54m <sup>2</sup>
<b>Planta Sótano</b>
Garaje: 76,17m <sup>2</sup>
Baño: 3,14m <sup>2</sup>
Terrazo: 3,14m <sup>2</sup>
Estranca 2: 7,51m <sup>2</sup>
Estranca 3: 5,50m <sup>2</sup>
Estranca 4: 12,31m <sup>2</sup>
<b>TOTAL: 108,33m<sup>2</sup></b>



**SUPERFICIE CONSTRUIDA:**

Planta Baño: 108,07m <sup>2</sup>
Planta Piso: 108,16m <sup>2</sup>
Planta Sótano: 131,50m <sup>2</sup>
<b>TOTAL: 347,73m<sup>2</sup></b>

