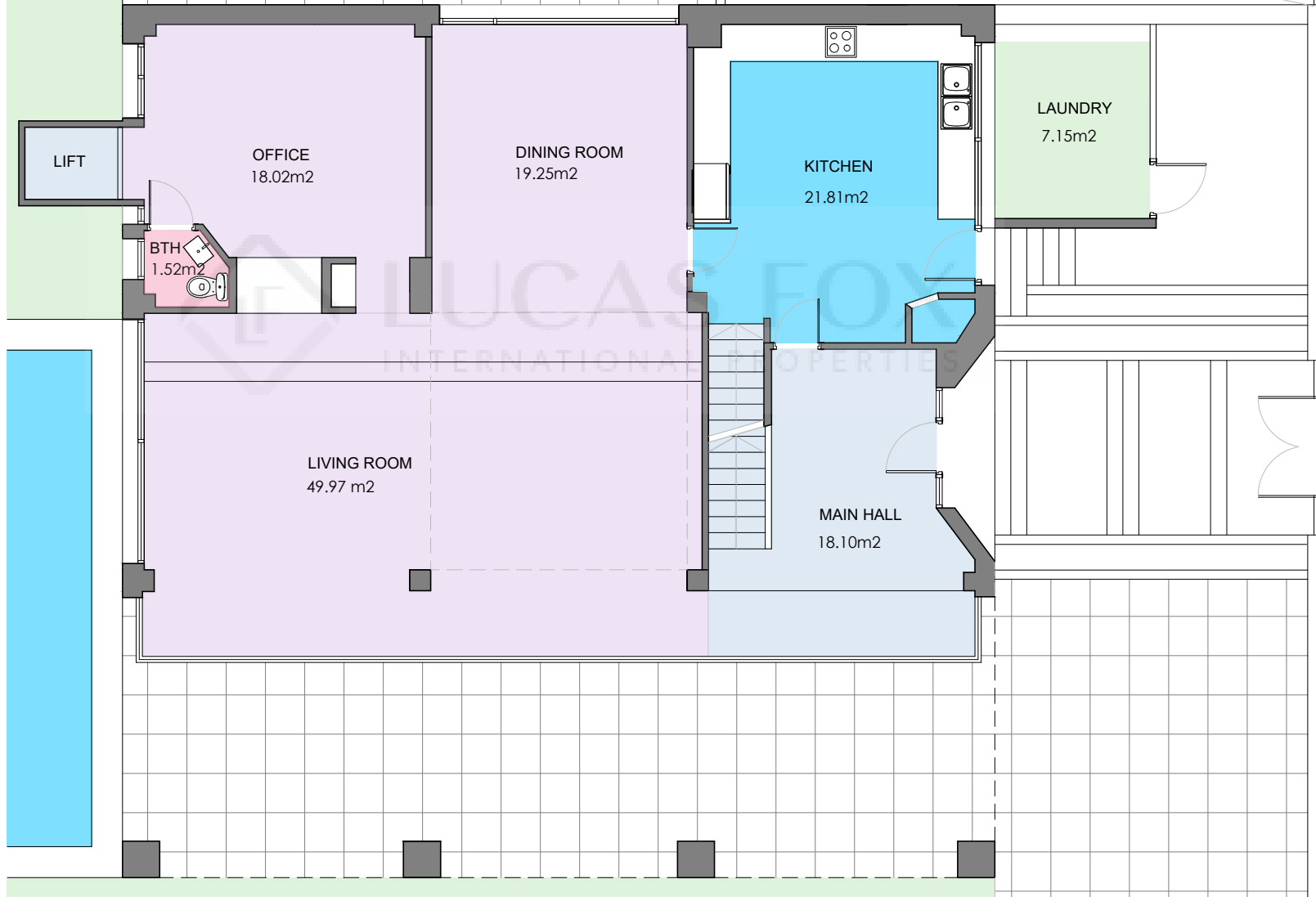


# SJD 38487

0 1 2 3 4 5

Scale (metres) E: 1/100.



### Measurements FLOOR 0

|                |                       |
|----------------|-----------------------|
| Built surface  | 159.47 m <sup>2</sup> |
| Useful surface | 135.82 m <sup>2</sup> |



Scale in metre. Indicative only. Dimensions are approximate. All information contained here is gathered from sources we believe to be reliable. However we cannot guarantee its accuracy and interested persons should rely on their own enquiries.

# SJD 38487

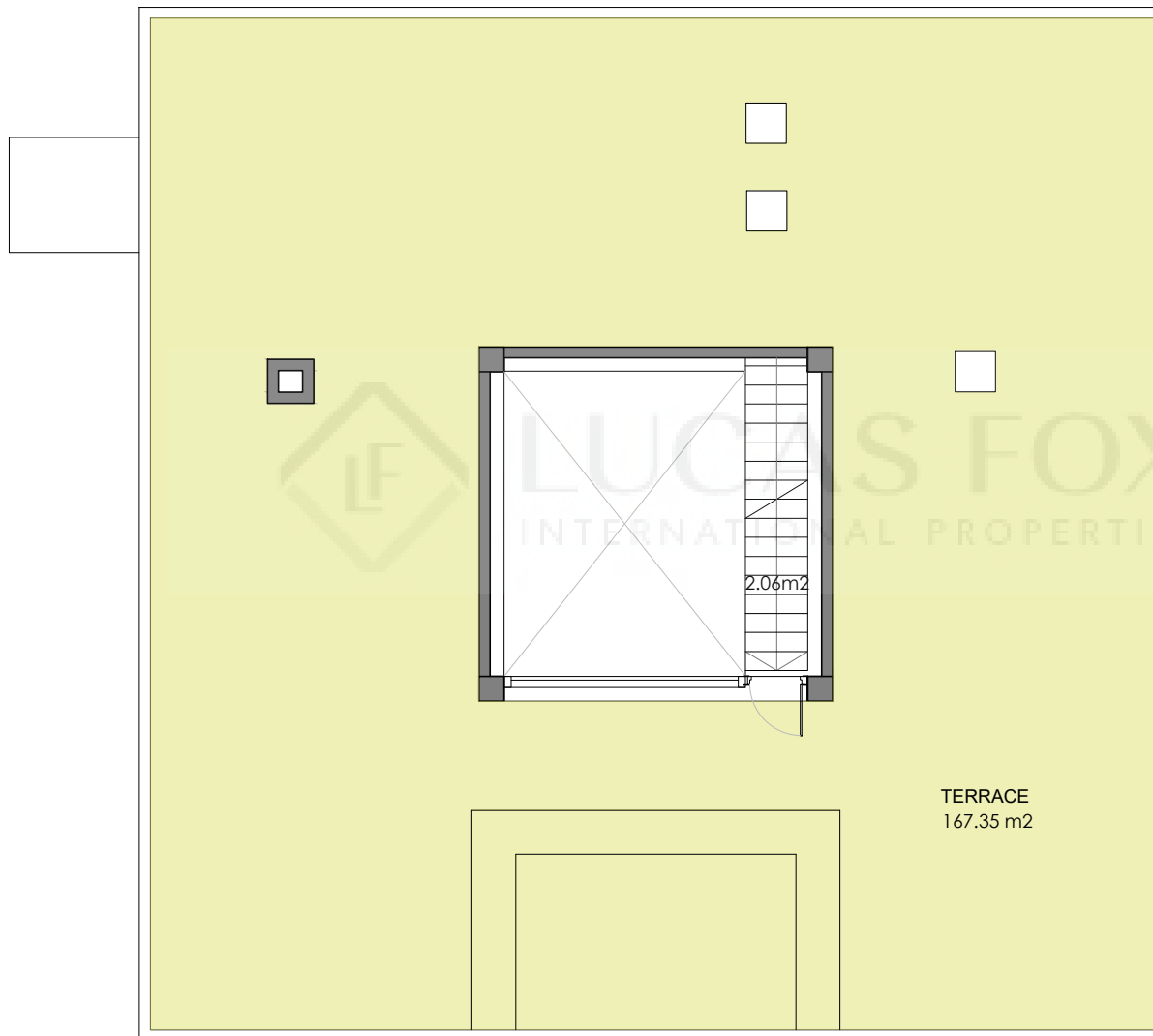
0 1 2 3 4 5

Scale (metres) E: 1/100.



Scale in metre. Indicative only. Dimensions are approximate. All information contained here is gathered from sources we believe to be reliable. However we cannot guarantee its accuracy and interested persons should rely on their own enquiries.

| Measurements FLOOR 1 |                       |
|----------------------|-----------------------|
| Built surface        | 191.63 m <sup>2</sup> |
| Useful surface       | 128.99 m <sup>2</sup> |
| Exterior surface     | 10.56 m <sup>2</sup>  |

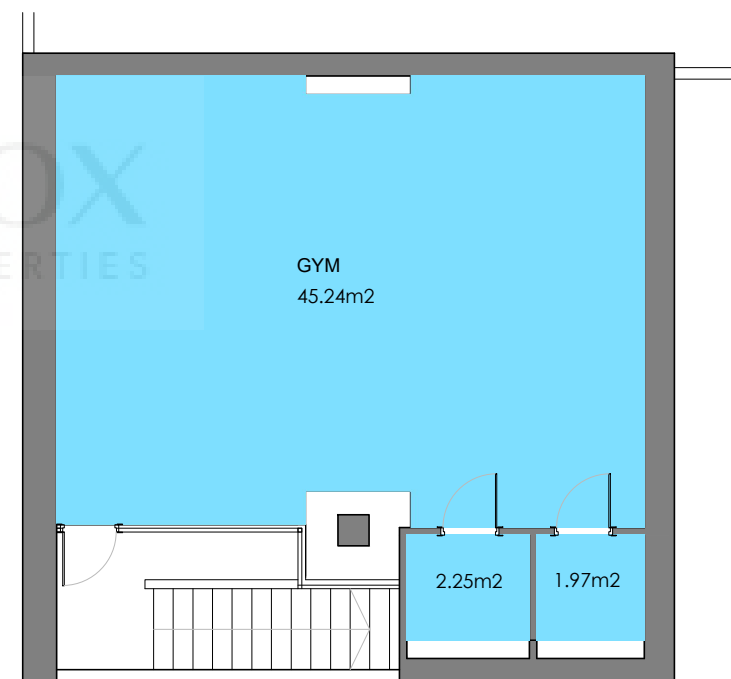


| Measurements FLOOR 2 |                       |
|----------------------|-----------------------|
| Built surface        | 9.56 m <sup>2</sup>   |
| Useful surface       | 2.06 m <sup>2</sup>   |
| Exterior surface     | 167.35 m <sup>2</sup> |

# SJD 38487

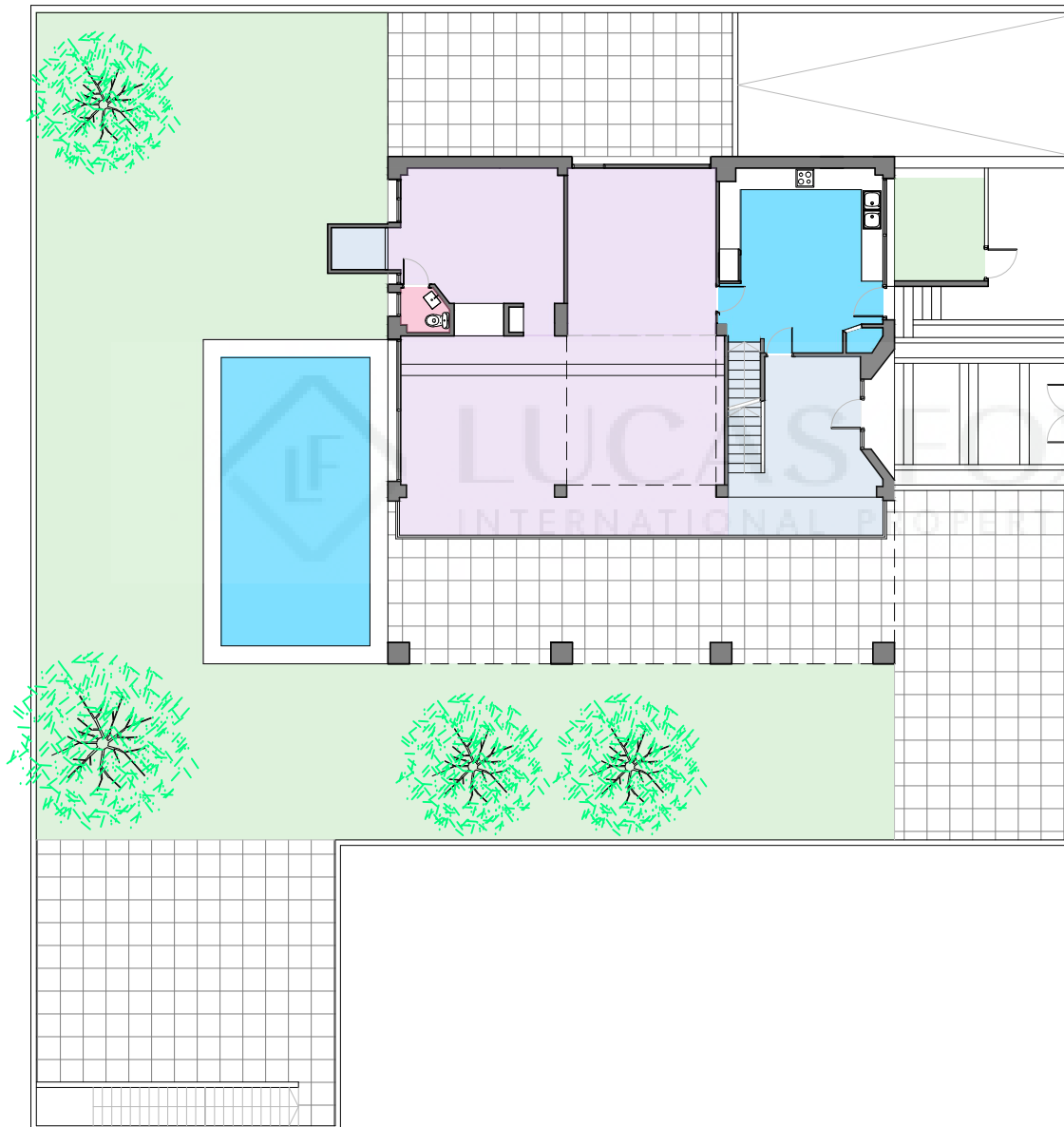


Scale (metres) E: 1/100.

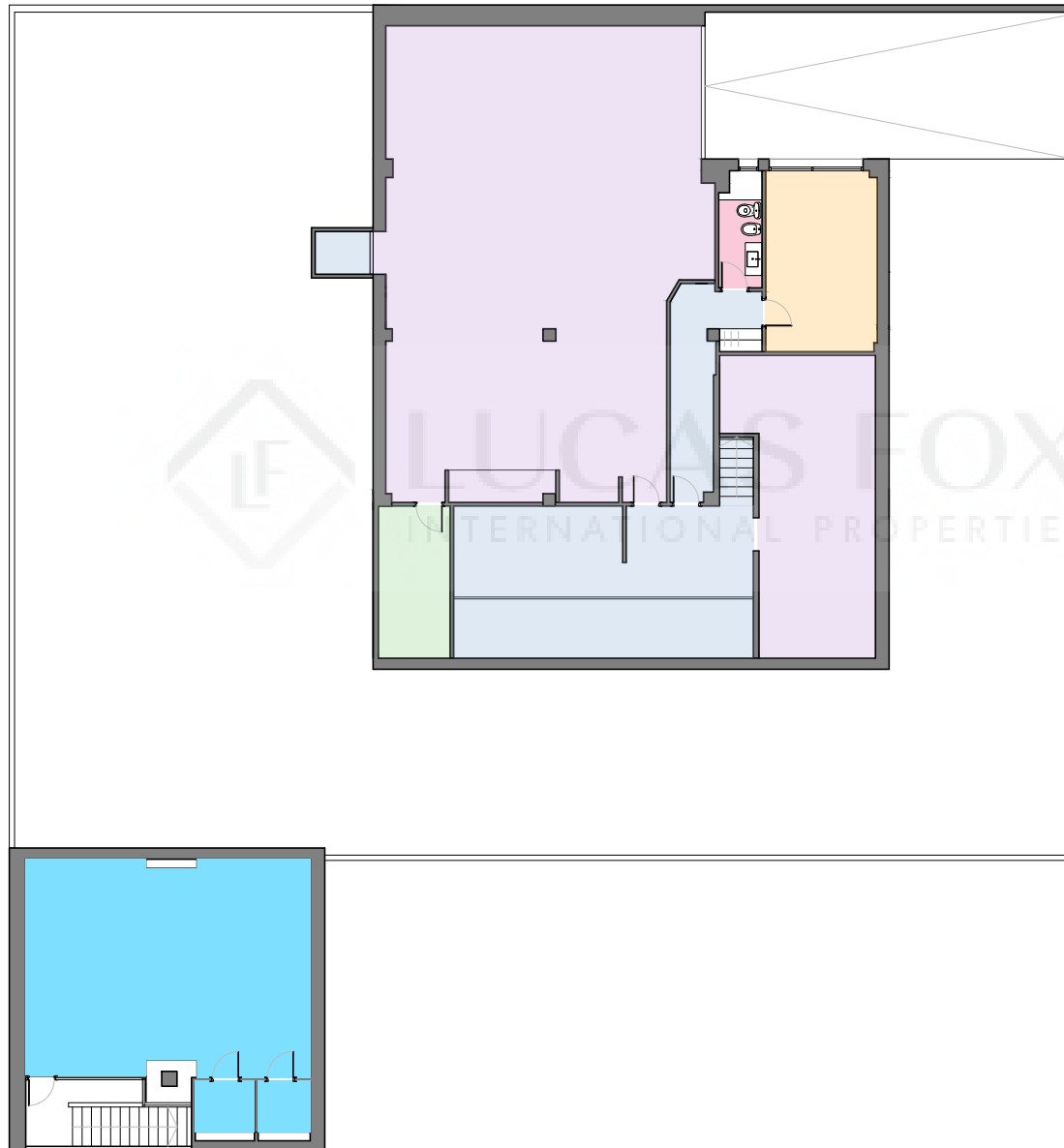


Scale in metre. Indicative only. Dimensions are approximate. All information contained here is gathered from sources we believe to be reliable. However we cannot guarantee its accuracy and interested persons should rely on their own enquiries.

| Measurements FLOOR -1 |                       |
|-----------------------|-----------------------|
| Built surface         | 237,04 m <sup>2</sup> |
| Useful surface        | 204,29 m <sup>2</sup> |
| Built surface gym     | 62,56 m <sup>2</sup>  |
| Useful surface gym    | 49,46 m <sup>2</sup>  |



| Measurements                |                       |
|-----------------------------|-----------------------|
| Built surface of main house | 597.78 m <sup>2</sup> |
| Built surface gym           | 62.56 m <sup>2</sup>  |
| Plot                        | 660.34 m <sup>2</sup> |



| Measurements FLOOR -1 |           |
|-----------------------|-----------|
| Built surface         | 237,04 m2 |
| Built surface gym     | 62,56 m2  |