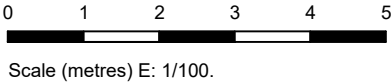


SJD 33485

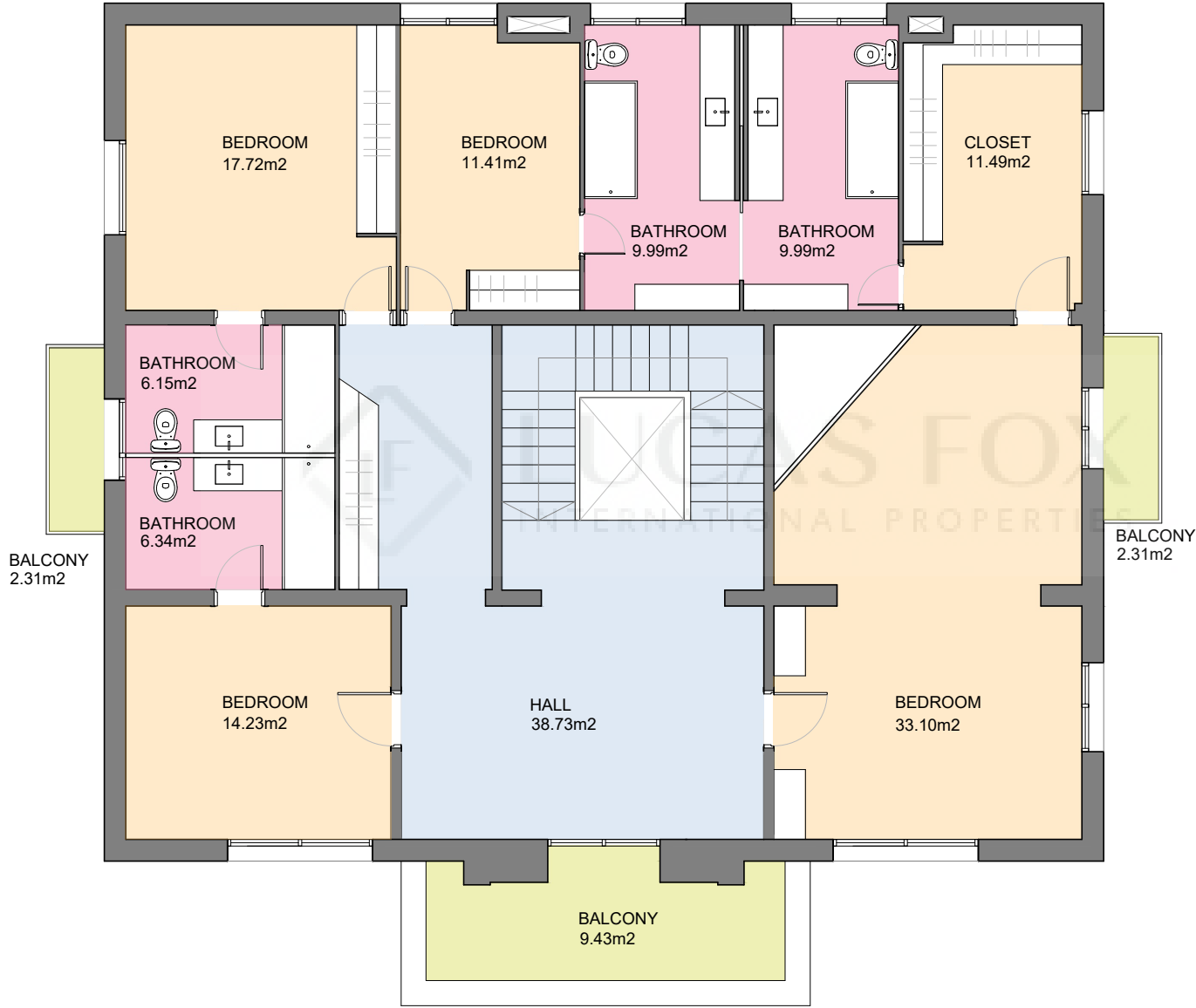


Scale in metre. Indicative only. Dimensions are aproximate. All information contained here is gathered from sources we believe to be reliable. However we cannot guarantee its accuracy and interested persons should rely on their own enquiries.

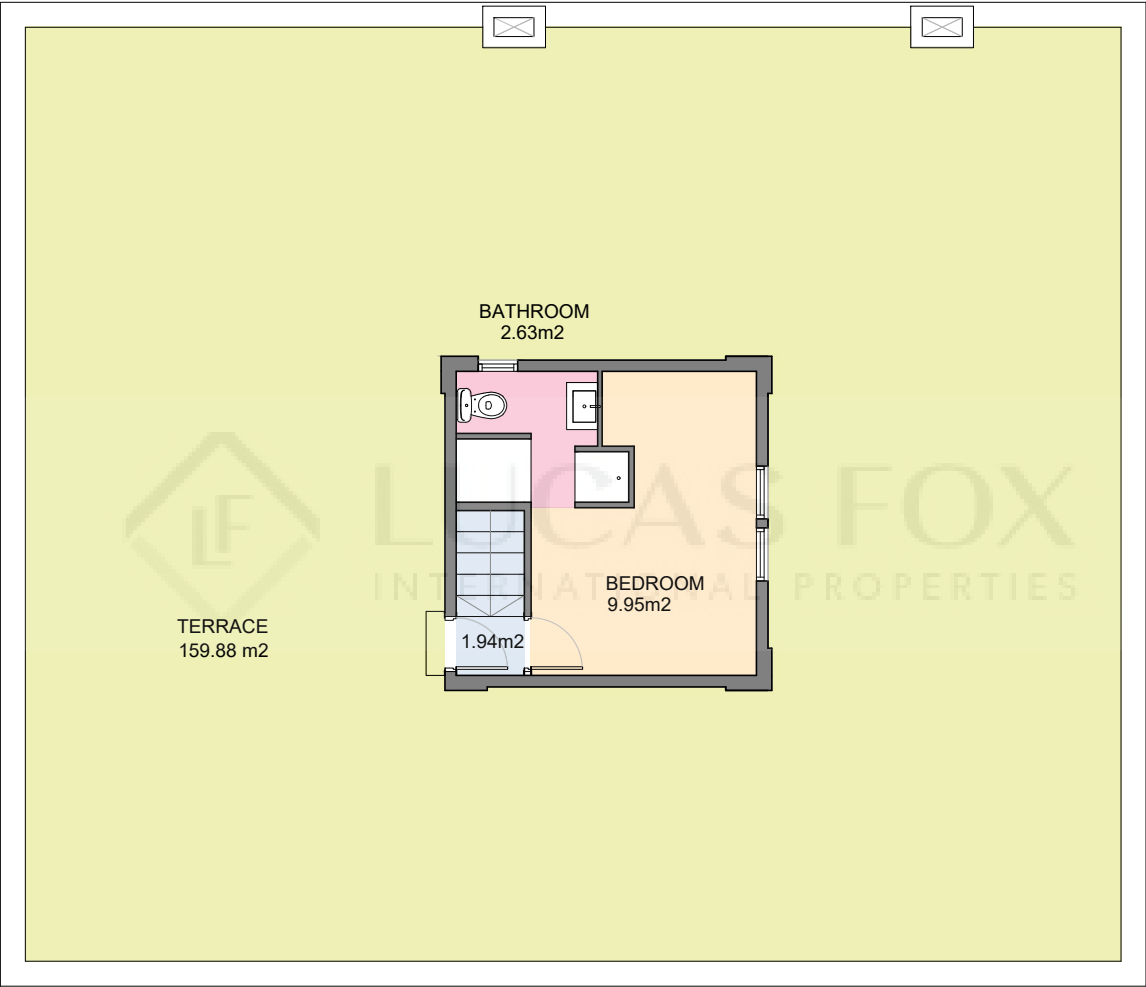
Measurements FLOOR 0	
Built surface	198.66 m <sup>2</sup>
Useful surface	170.42 m <sup>2</sup>



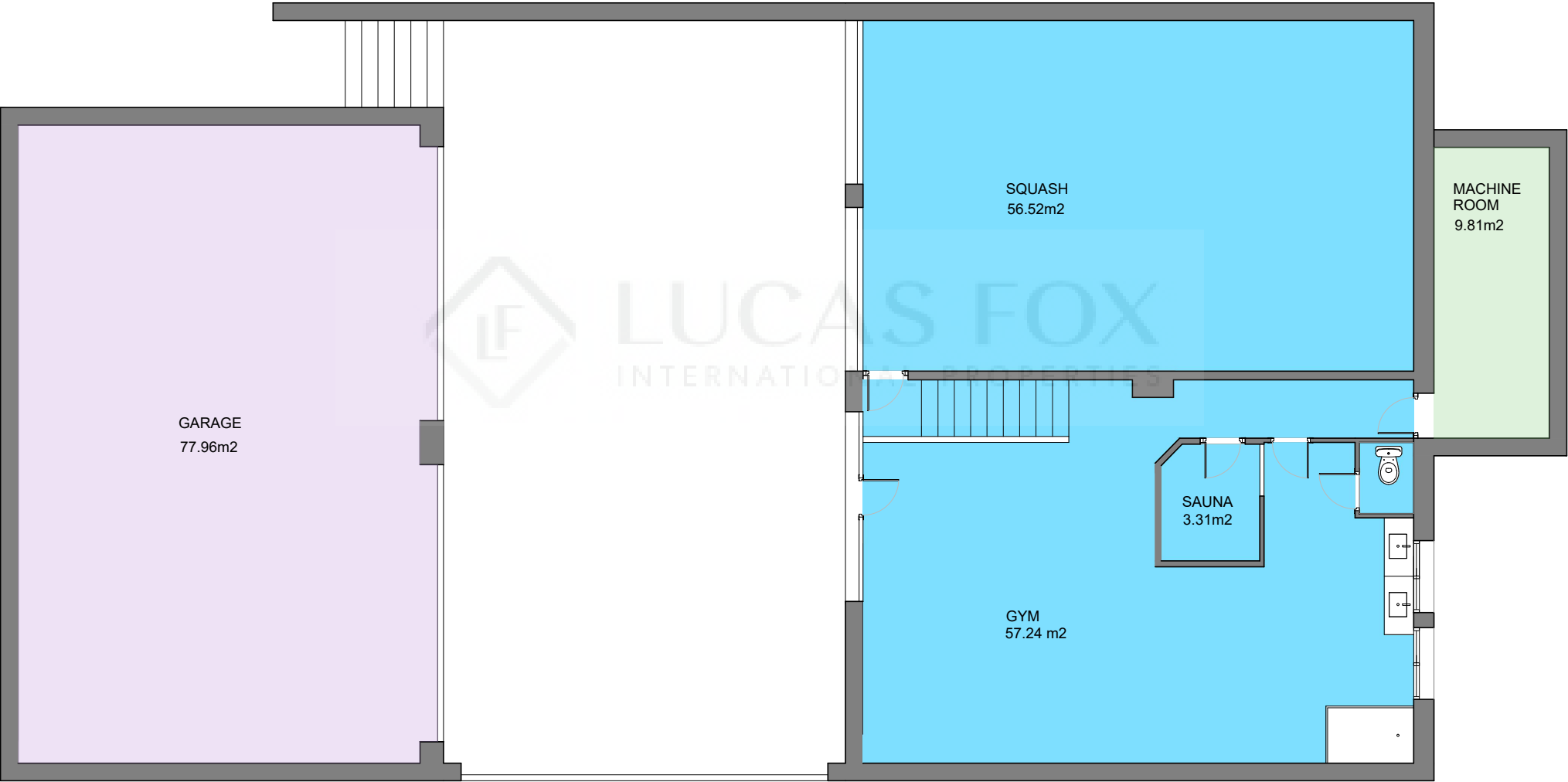
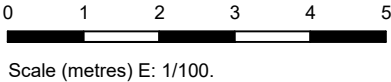
Scale (metres) E: 1/100.



Measurements FLOOR 1	
Built surface	198.66 m2
Useful surface	159.15m2
Exterior surface	14.05 m2



Measurements FLOOR 2	
Built surface	18.63 m2
Useful surface	14.52 m2
Exterior surface	159.88 m2



Measurements FLOOR -1	
Built surface garage	87.32 m2
Built surface gym	146.69 m2



Scale (metres) E: 1/500.



Measurements	
Built surface main construction	415.95 m2
Built surface auxiliary construction	140.00 m2
Built surface garage	87.32 m2
Built surface gym	146.69 m2
Parcel	3.802.00 m2