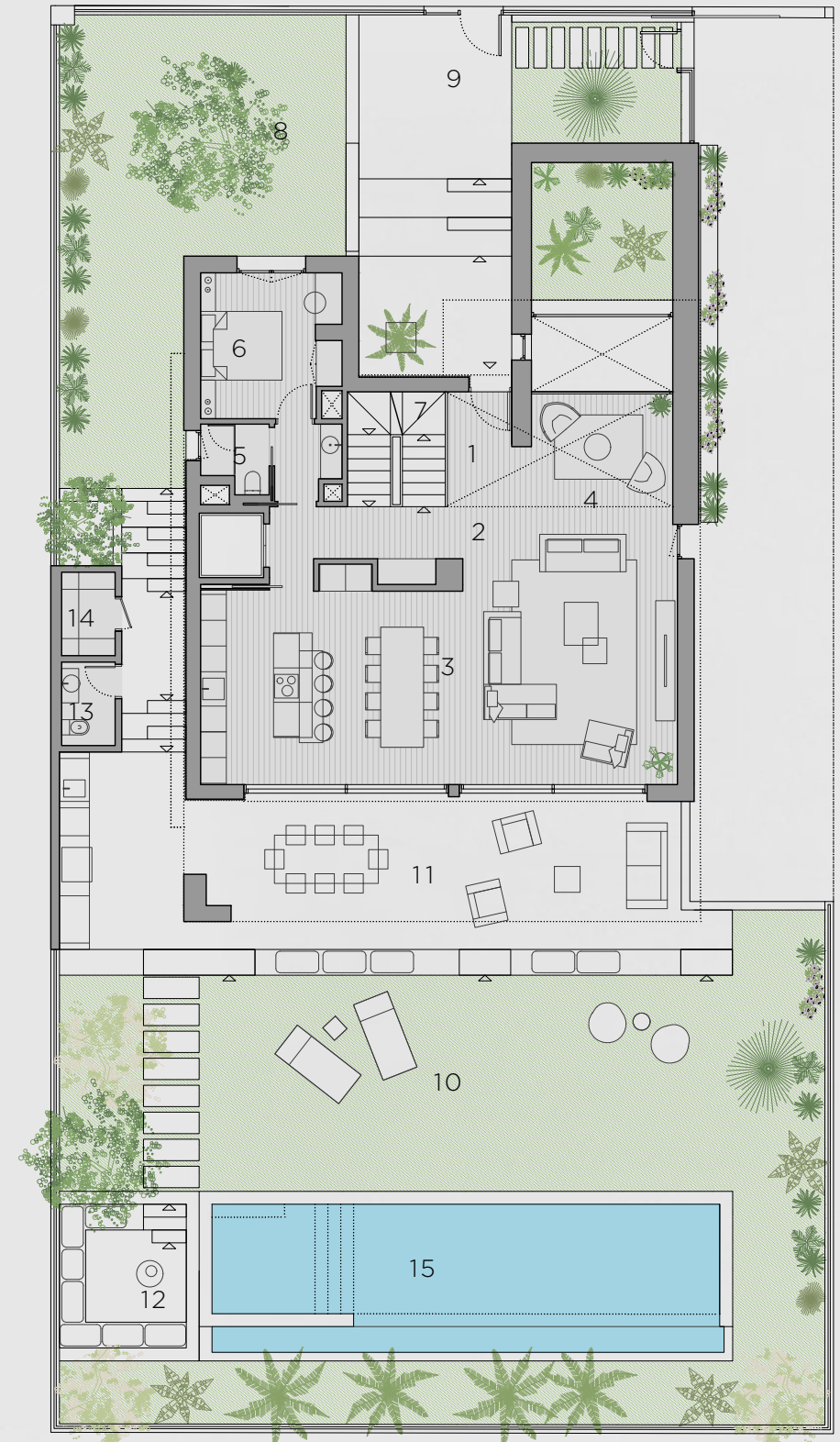


TYPE 3

SPECIAL FEATURES

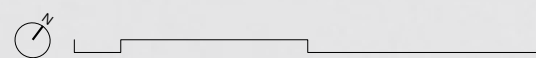
486 m ²	GROSS AREA
234 m ²	GARDEN
91 m ²	TERRACE
5	PARKING SPACES
4	BEDROOMS
6	BATHROOMS
	ELEVATOR
	MULTIPURPOSE ROOM
	INFINITY POOL
	CHILL-OUT AREA
	OUTDOOR KITCHEN

LUCAS FOX
INTERNATIONAL PROPERTIES



TYPE 3 - GROUND FLOOR

1	ENTRANCE	4.65 m ²	9	ACCESS	29.85 m ²
2	HALL 2	6.50 m ²	10	GARDEN	139.48 m ²
3	KITCHEN-DINING-LIVING ROOM	61.40 m ²	11	TERRACE	63.88 m ²
4	READING AREA	8.75 m ²	12	CHILL-OUT AREA	9.88 m ²
5	BATHROOM 3	5.00 m ²	13	WC	2.45 m ²
6	BEDROOM 1	10.60 m ²	14	STORAGE	2.45 m ²
7	STAIRS	5.65 m ²	15	SWIMMING POOL	30.34 m ²
8	ACCESS GARDEN	64.30 m ²			





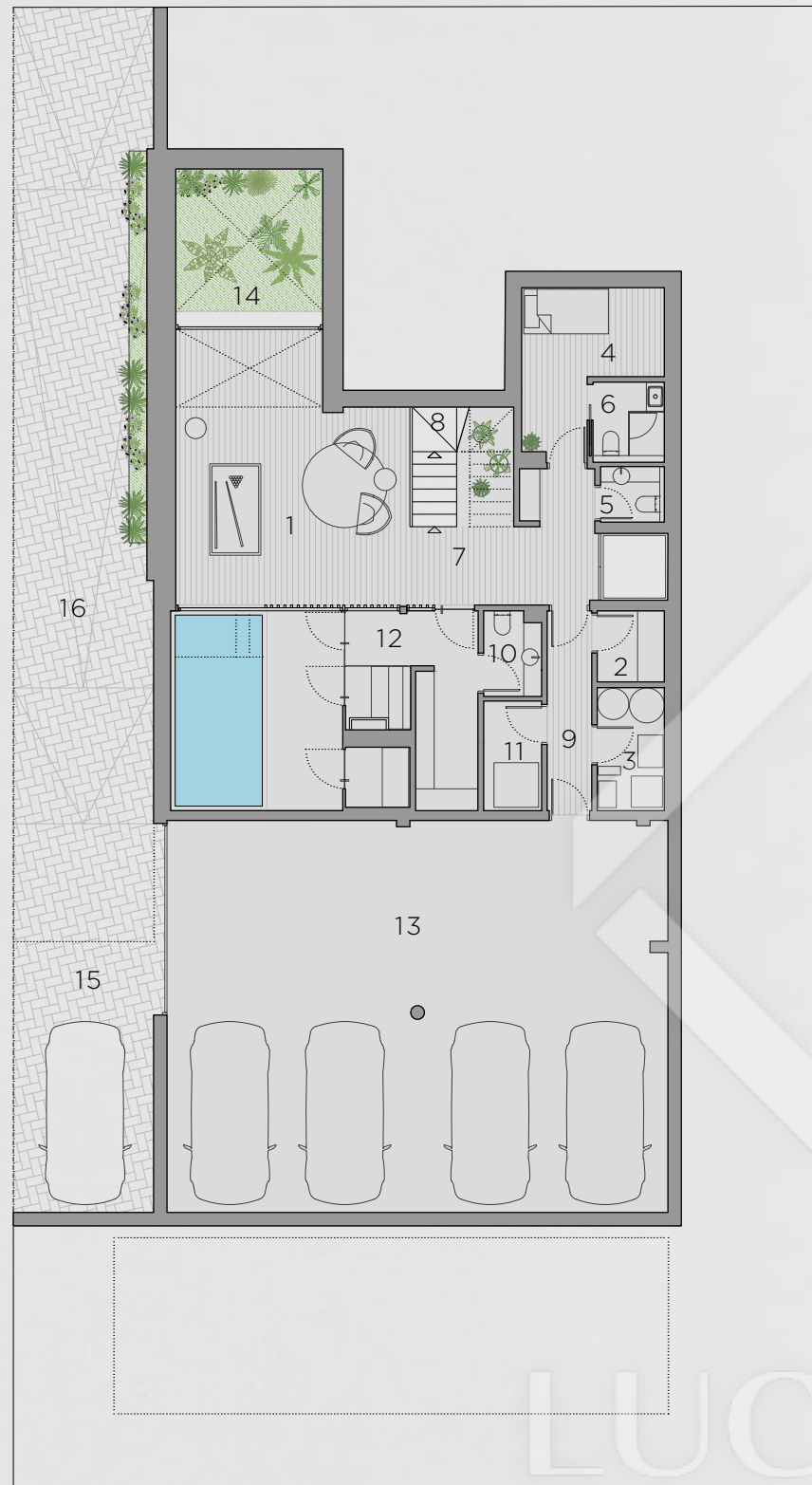
TYPE 3 - FIRST FLOOR

1	HALL 3	5.45 m ²
2	BEDROOM 2	13.60 m ²
3	BEDROOM 3	13.10 m ²
4	BEDROOM 4	16.15 m ²
5	BATHROOM 4	7.50 m ²
6	BATHROOM - DRESSING ROOM	15.85 m ²
7	TERRACE	27.20 m ²



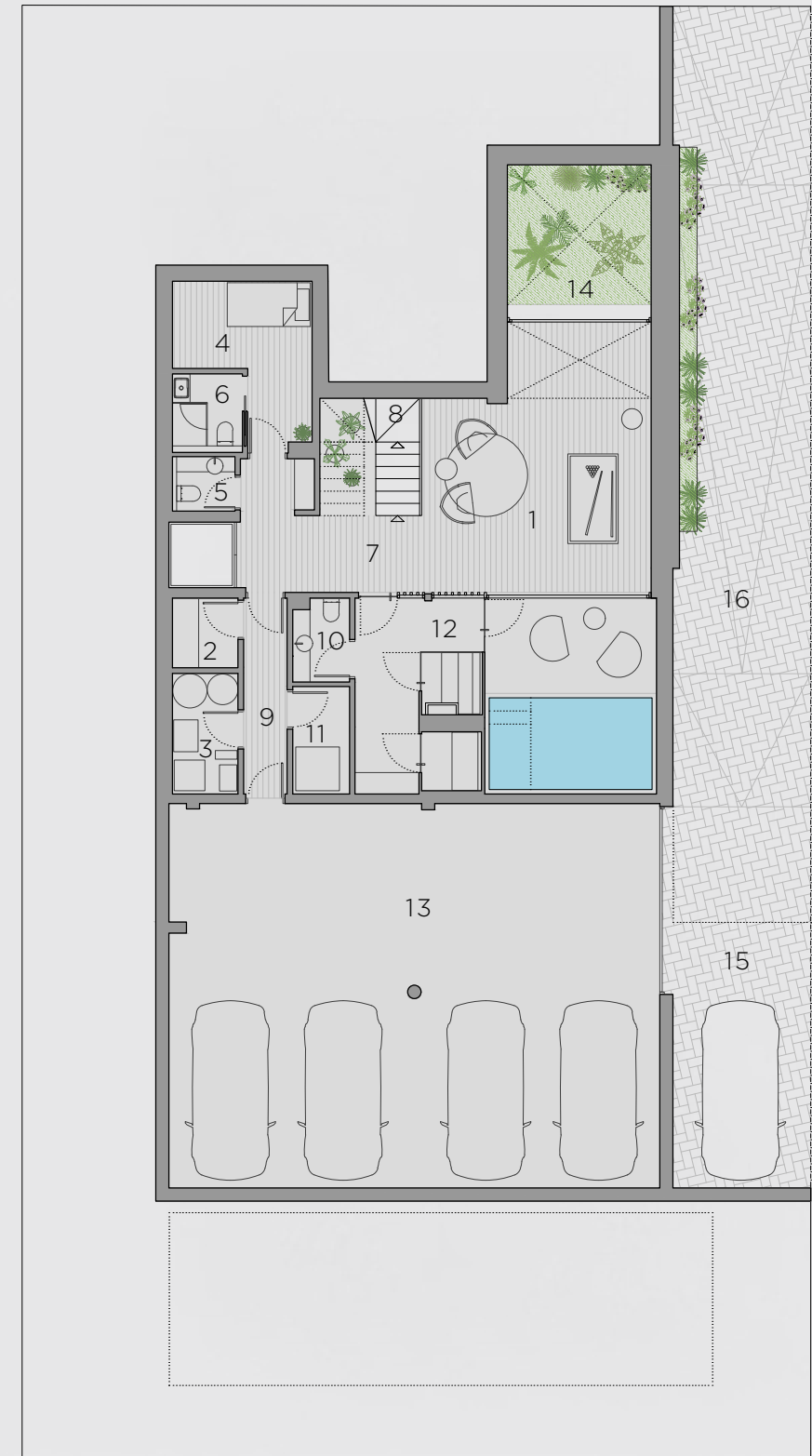
TYPE 3 - BASEMENT

1	MULTIPURPOSE ROOM	53.70 m ²	8	PARKING	98.67 m ²
2	LAUNDRY ROOM	12.27 m ²	9	STAIRS	5.65 m ²
3	MACHINE ROOM	11.80 m ²	10	PATIO	10.55 m ²
4	STORAGE ROOM	9.11 m ²	11	COVERED RAMP	19.45 m ²
5	BATHROOM 1	1.79 m ²	12	RAMP	64.60 m ²
6	BATHROOM 2	2.64 m ²			
7	HALL 1	9.45 m ²			



SPA TYPE 1 - BASEMENT UPGRADE - HOUSE 32 AND 36

1	MULTIPURPOSE ROOM	29.00 m ²	9	HALL 2	4.49 m ²
2	LAUNDRY ROOM	2.40 m ²	10	SPA BATHROOM	2.40 m ²
3	MACHINE ROOM	4.15 m ²	11	MACHINE ROOM 2	3.20 m ²
4	STORAGE ROOM	9.11 m ²	12	SPA	30.95 m ²
5	BATHROOM 1	1.79 m ²	13	PARKING	98.67 m ²
6	BATHROOM 2	2.64 m ²	14	PATIO	10.55 m ²
7	HALL 1	9.45 m ²	15	COVERED RAMP	19.45 m ²
8	STAIRS	5.65 m ²	16	RAMP	64.65 m ²



SPA TYPE 2 - BASEMENT UPGRADE - HOUSE 30 AND 34

1	MULTIPURPOSE ROOM	29.00 m ²	9	HALL 2	4.49 m ²
2	LAUNDRY ROOM	2.40 m ²	10	SPA BATHROOM	2.40 m ²
3	MACHINE ROOM	4.15 m ²	11	MACHINE ROOM 2	3.20 m ²
4	STORAGE ROOM	9.11 m ²	12	SPA	30.95 m ²
5	BATHROOM 1	1.79 m ²	13	PARKING	98.67 m ²
6	BATHROOM 2	2.64 m ²	14	PATIO	10.55 m ²
7	HALL 1	9.45 m ²	15	COVERED RAMP	19.45 m ²
8	STAIRS	5.65 m ²	16	RAMP	64.65 m ²

LUCAS FOX
INTERNATIONAL PROPERTIES