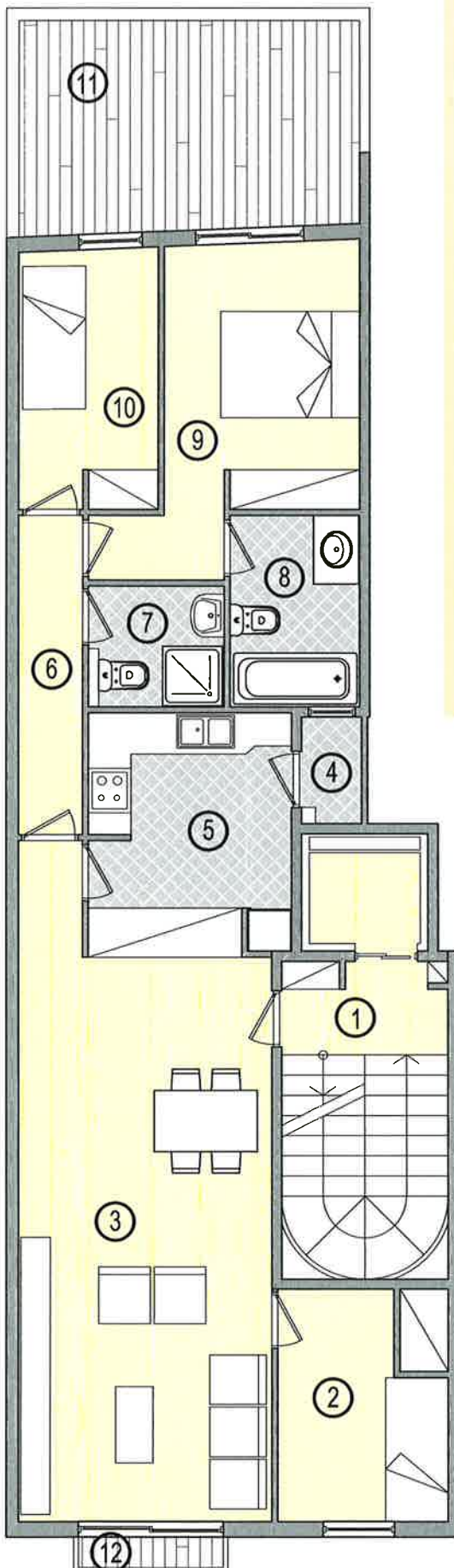


APARTMENT #1

3-bedroom apartment (84m²) has 2 bedrooms with fitted wardrobes, 2 bathrooms with plumbing, furnished kitchen, terrace, balcony and two-side oriented windows.



- (1) hall
- (2) bedroom 3
- (3) living & dining room
- (4) patio
- (5) kitchen
- (6) hall
- (7) bathroom 1
- (8) bathroom 2
- (9) bedroom 1
- (10) bedroom 2
- (11) terrace
- (12) balcony



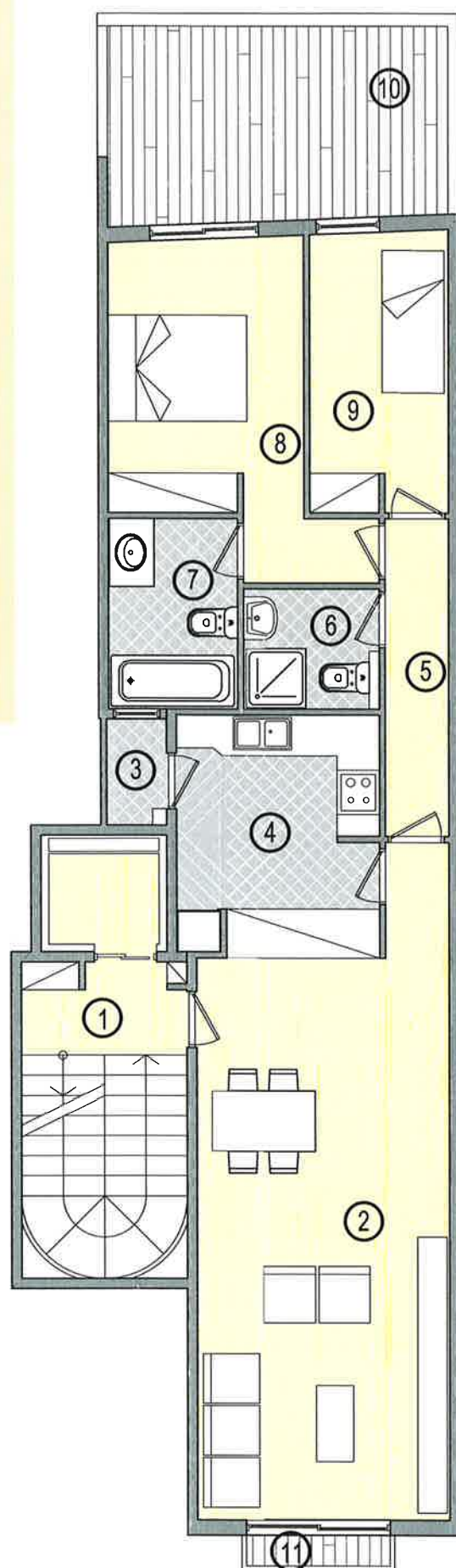
PLANNING

APARTMENT #2

2-bedroom apartment (76m²) has 2 bedrooms with fitted wardrobes, 2 bathrooms with plumbing, furnished kitchen, terrace, balcony and two-side oriented windows.

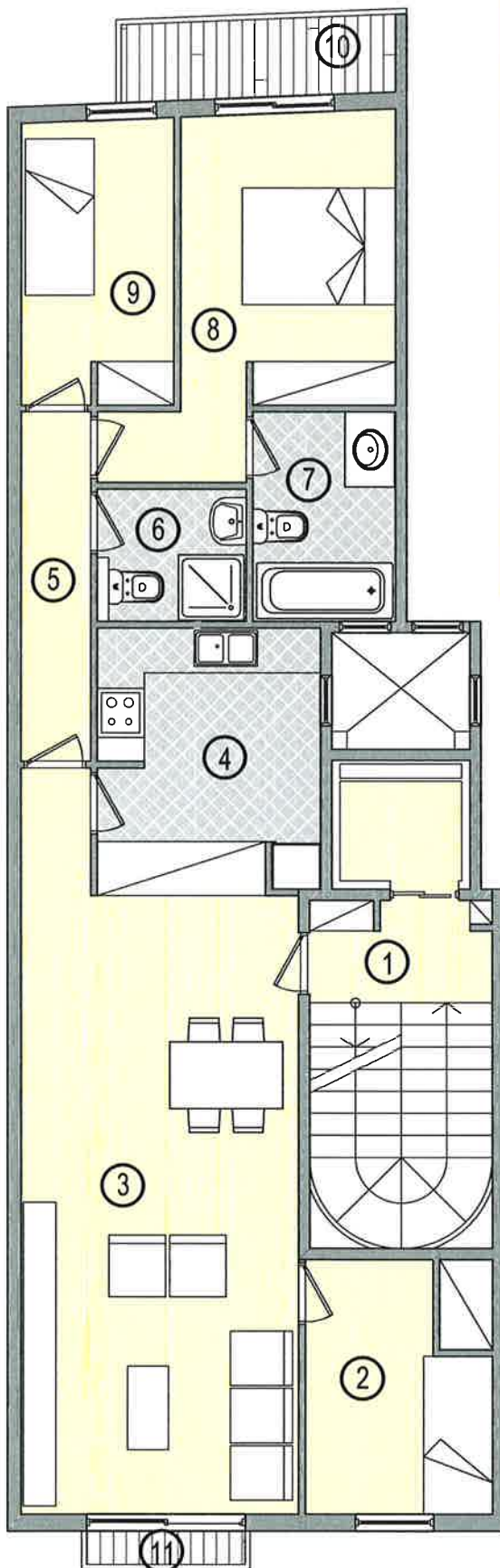


- (1) hall
- (2) living & dining room
- (3) patio
- (4) kitchen
- (5) hall
- (6) bathroom 1
- (7) bathroom 2
- (8) bedroom 1
- (9) bedroom 2
- (10) terrace
- (11) balcony



APARTMENT #3

3-bedroom apartment (84m²) has 2 bedrooms with fitted wardrobes, 2 bathrooms with plumbing, furnished kitchen, terrace, balcony and two-side oriented windows.



- (1) hall
- (2) bedroom 3
- (3) living & dining room
- (4) kitchen
- (5) hall
- (6) bathroom 1
- (7) bathroom 2
- (8) bedroom 1
- (9) bedroom 2
- (10) terrace
- (11) balcony

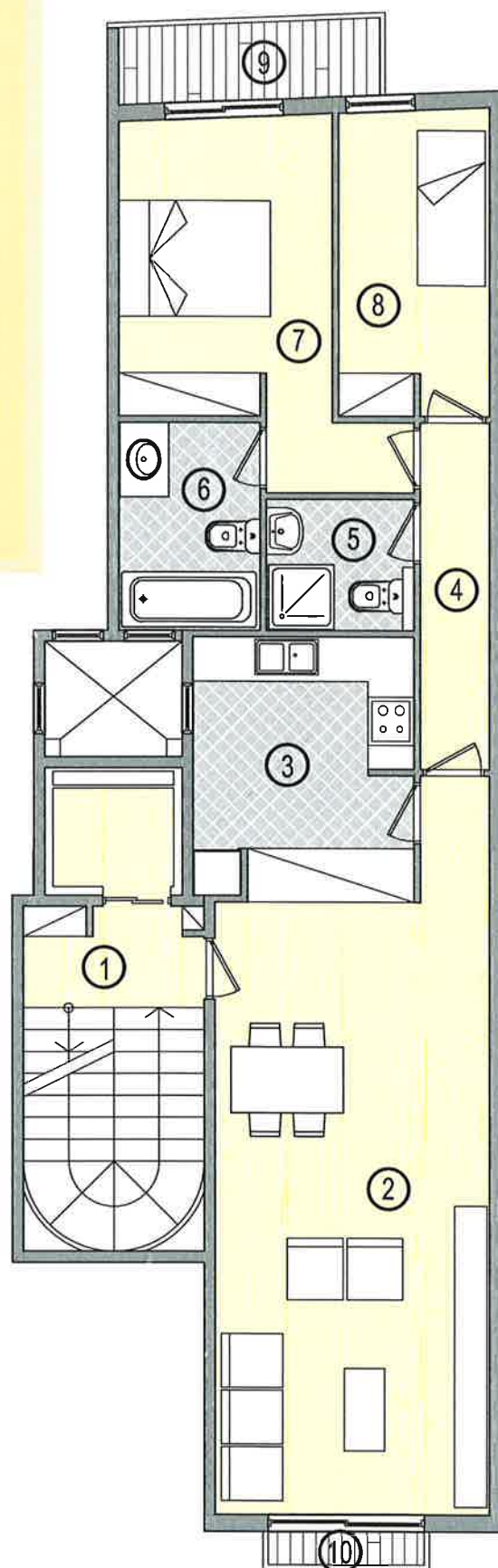
PLANNING

APARTMENT #4

2-bedroom apartment (76m²) has 2 bedrooms with fitted wardrobes, 2 bathrooms with plumbing, furnished kitchen, terrace, balcony and two-side oriented windows.

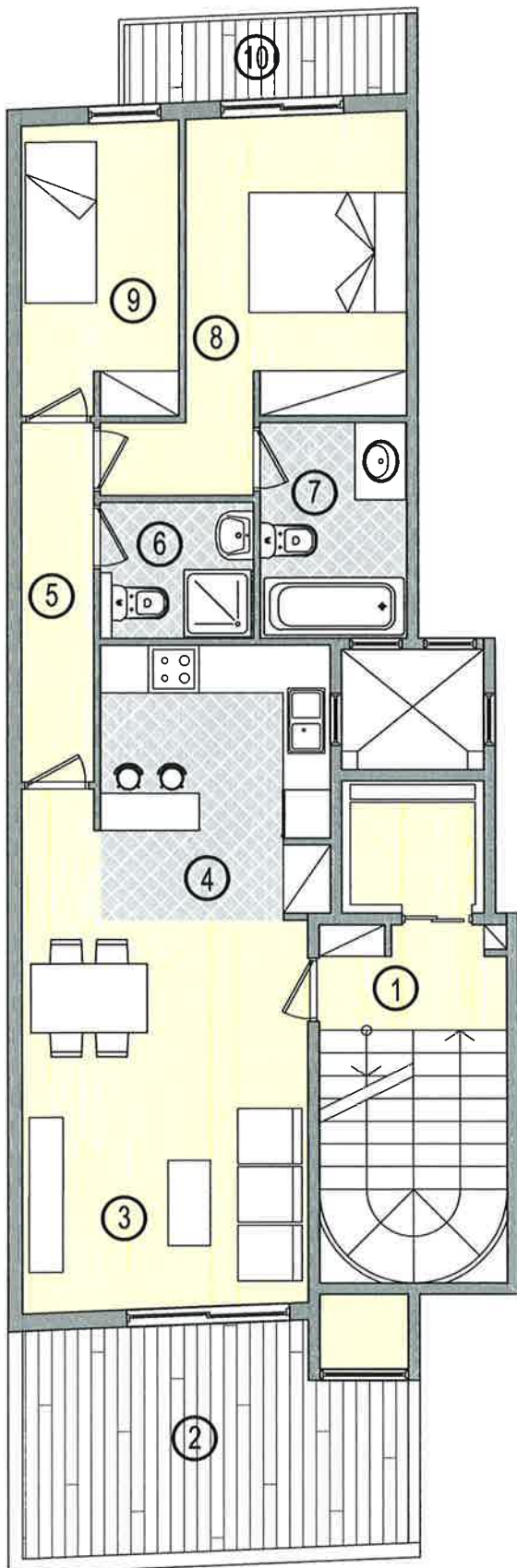


- (1) hall
- (2) living & dining room
- (3) kitchen
- (4) hall
- (5) bathroom 1
- (6) bathroom 2
- (7) bedroom 1
- (8) bedroom 2
- (9) terrace
- (10) balcony



APARTMENT #5

2-bedroom penthouse (65m²) has 2 bedrooms with fitted wardrobes, 2 bathrooms with plumbing, furnished kitchen, 2 terraces and two-side oriented windows.



- (1) hall
- (2) terrace
- (3) living & dining room
- (4) kitchen
- (5) hall
- (6) bathroom 1
- (7) bathroom 2
- (8) bedroom 1
- (9) bedroom 2
- (10) terrace

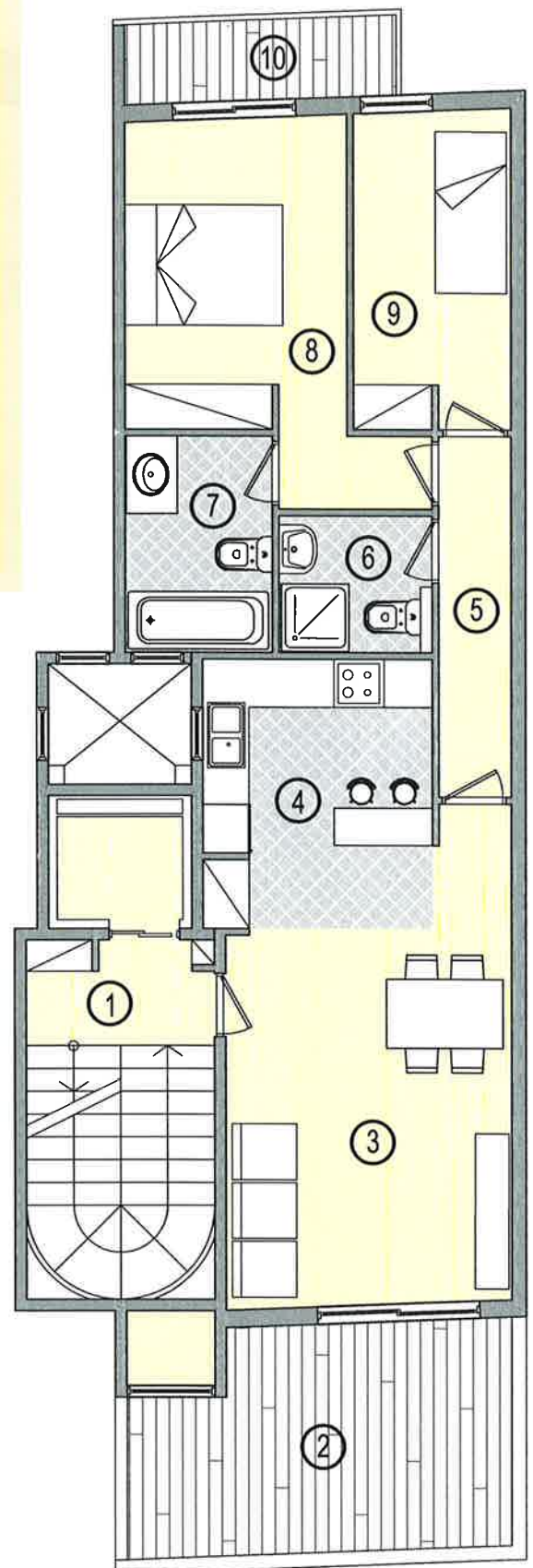
PLANNING

APARTMENT #6

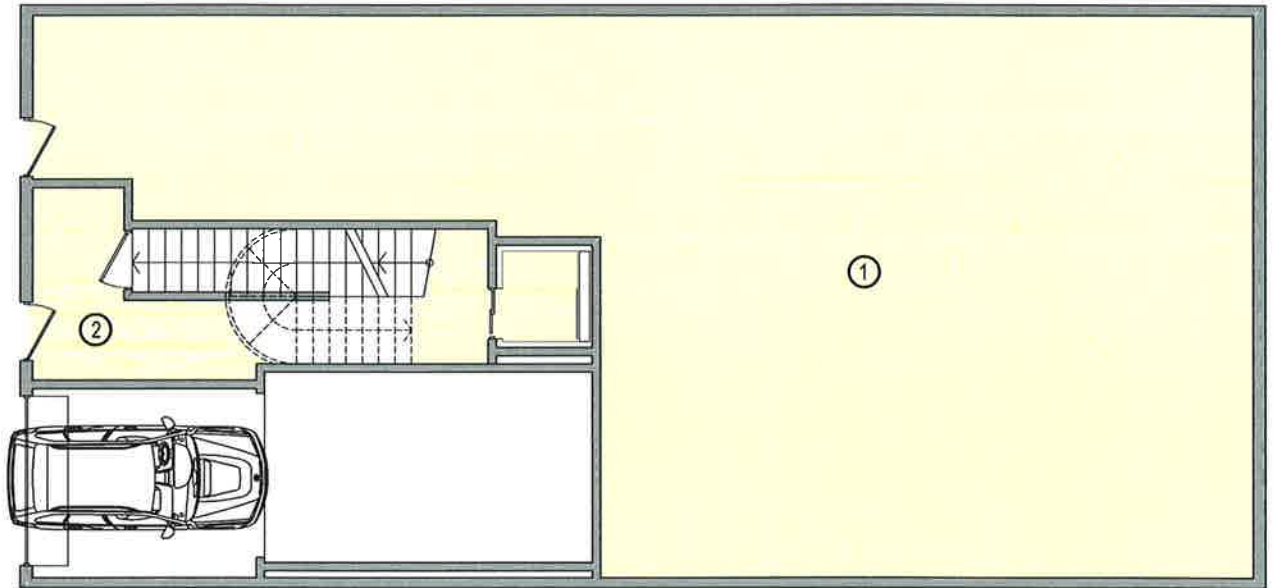
2-bedroom penthouse (65m²) has 2 bedrooms with fitted wardrobes, 2 bathrooms with plumbing, furnished kitchen, 2 terraces and two-side oriented windows.



- (1) hall
- (2) terrace
- (3) living & dining room
- (4) kitchen
- (5) hall
- (6) bathroom 1
- (7) bathroom 2
- (8) bedroom 1
- (9) bedroom 2
- (10) terrace



PLANNING

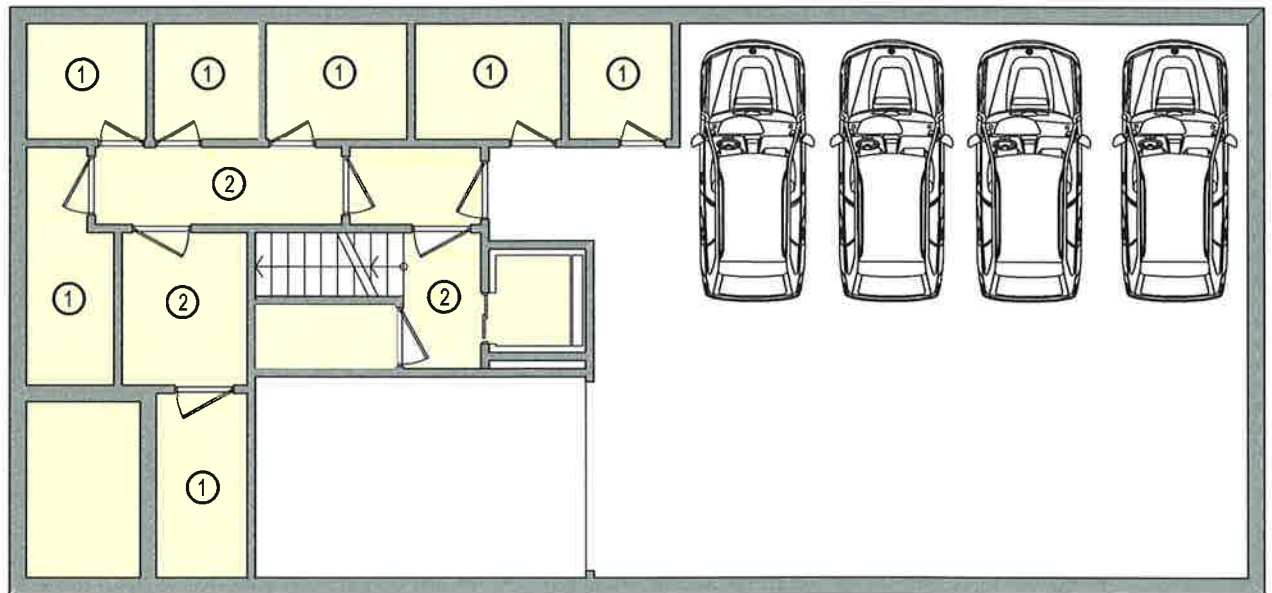


OFFICE #1

office room (1)
hall (2)



PLANNING



PARKING #1

basement room (1)
hall (2)

