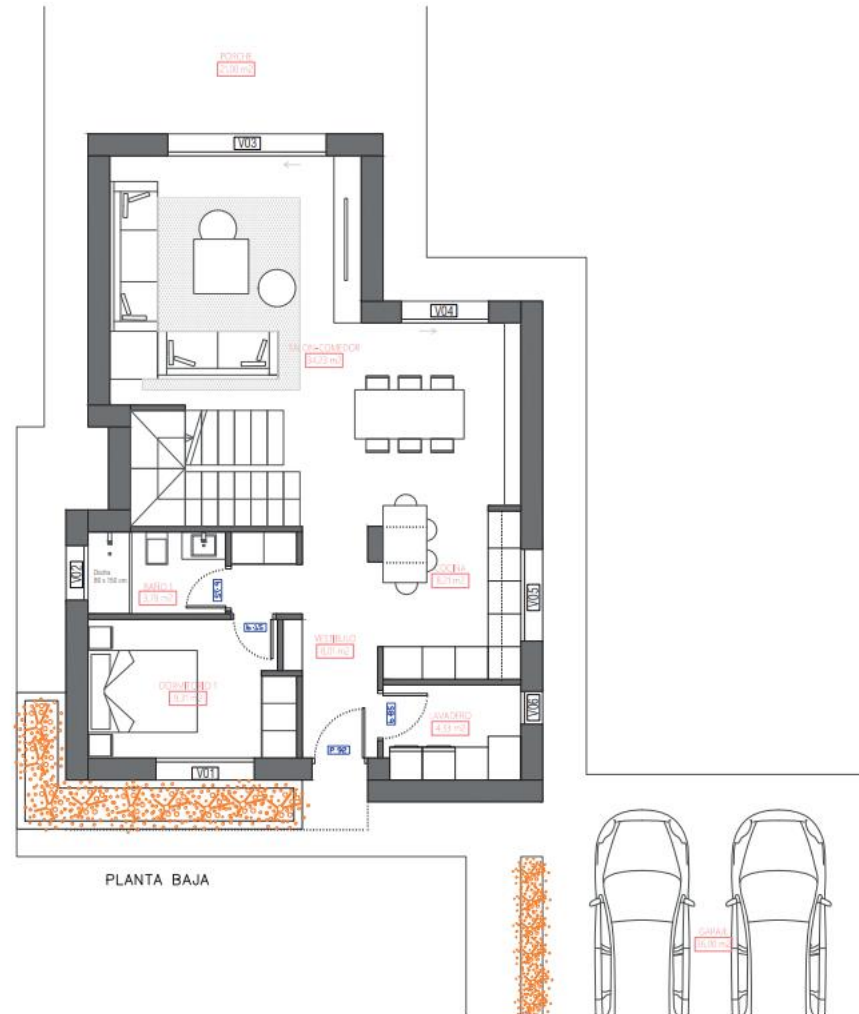




### PLANTA BAJA

E: 1/100



Vivienda	=	196,70 m <sup>2</sup>
Garaje	=	36,00 m <sup>2</sup>
Porche	=	21,00 m <sup>2</sup>
Terraza	=	69,10 m <sup>2</sup>
<b>TOTAL</b>	=	<b>322,80 m<sup>2</sup></b>



# PLANTA PRIMERA

OPCIÓN 2

E: 1/75

