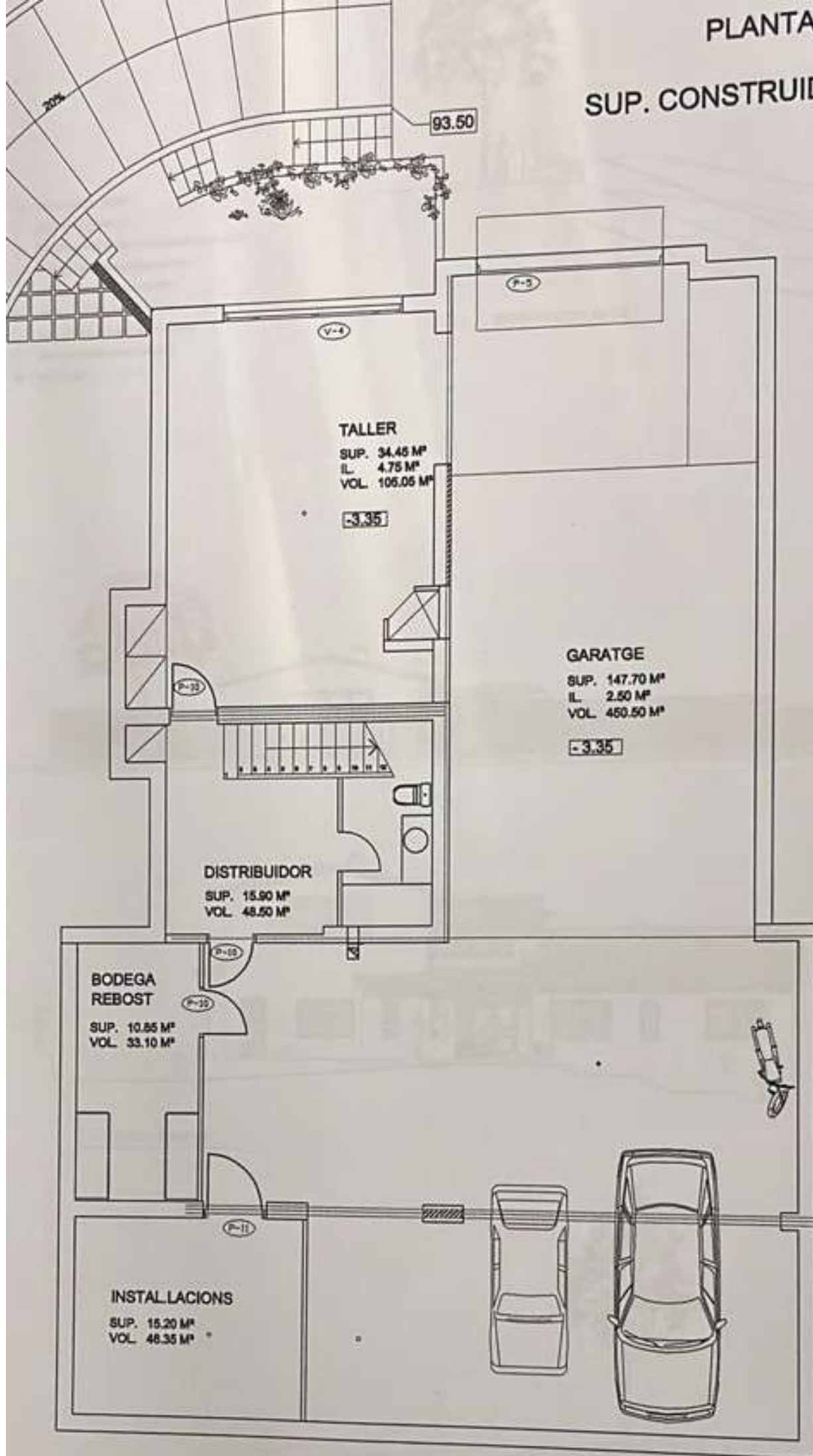


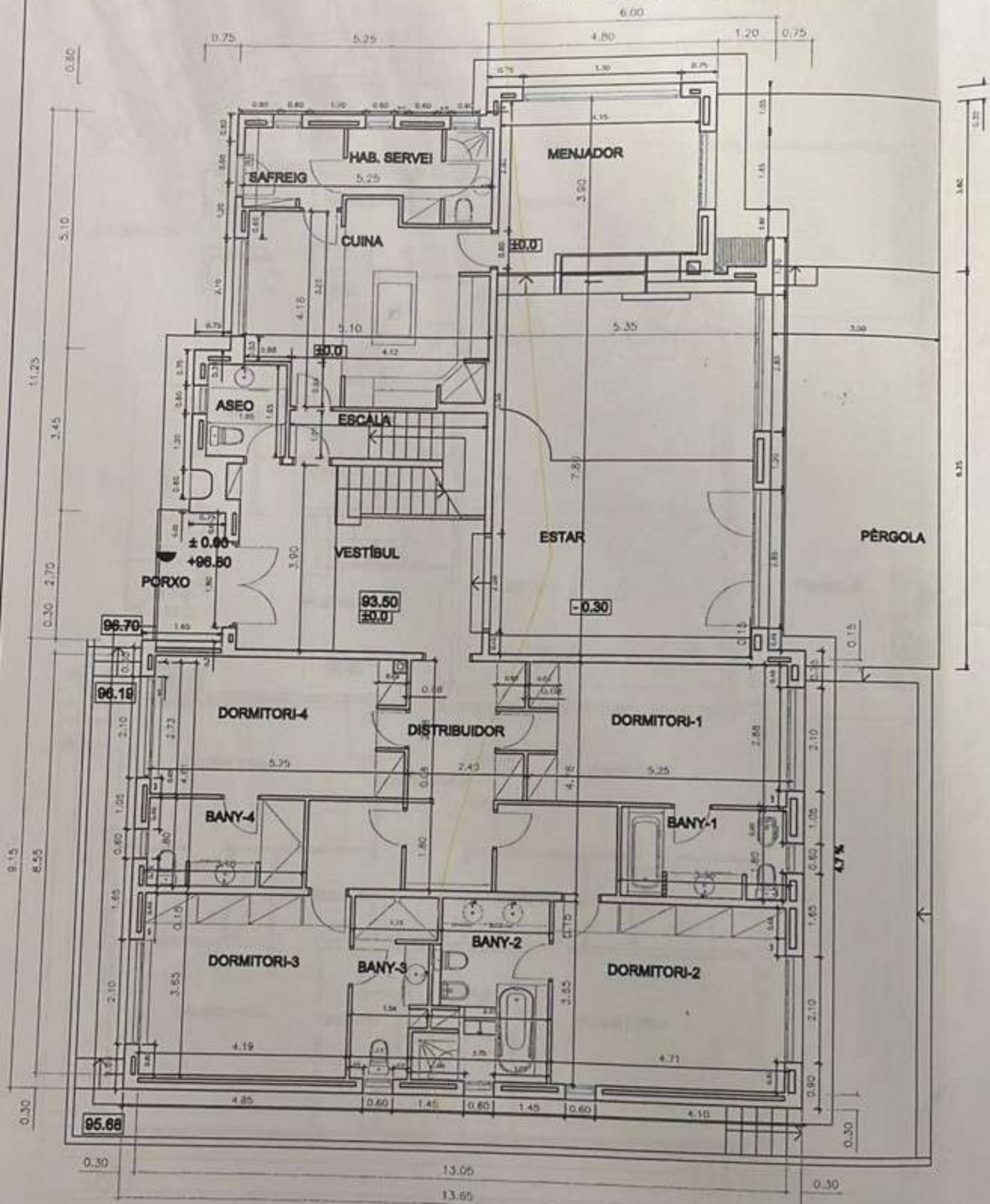
PLANTA SOTERRANI

SUP. CONSTRUIDA: 257.65 m²



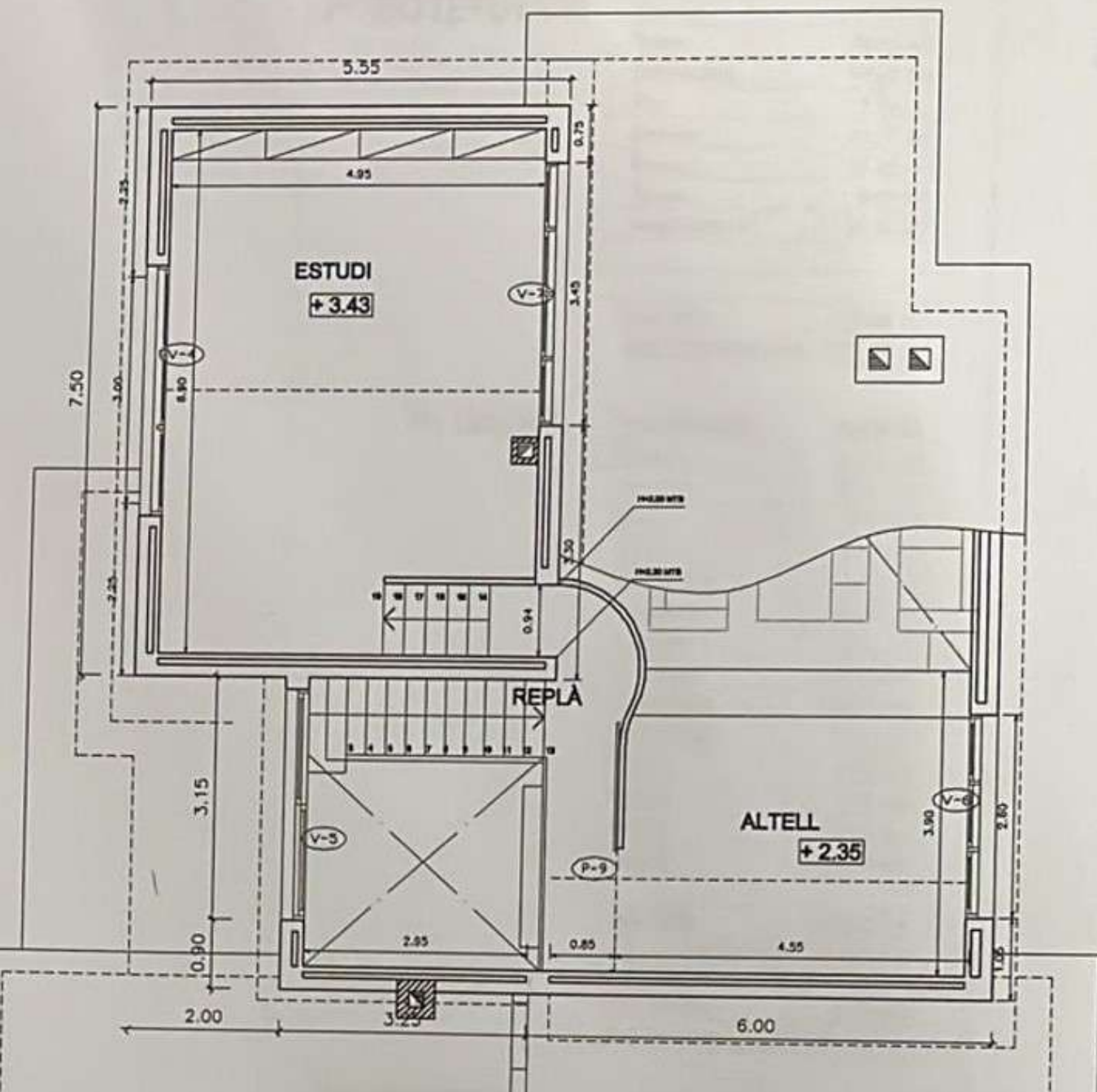
PLANTA BAIXA

SUP. CONSTRUIDA: 253.69 m²



PLANTA PRIMERA

SUP. CONSTRUIDA: 69.85 m²



ALBERTO ALBERTI, S.L.
ESTUDIO DE ARQUITECTURA
C/ALBA DE TORDOS, 10
08180 SALLS DE Noya, BARCELONA

PROYECTO: []
FECHA: []

