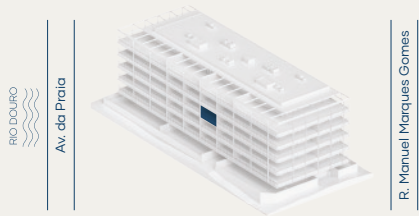


M4.B4AB_T2

ÁREA TOTAL (M²) **118.3 m²**

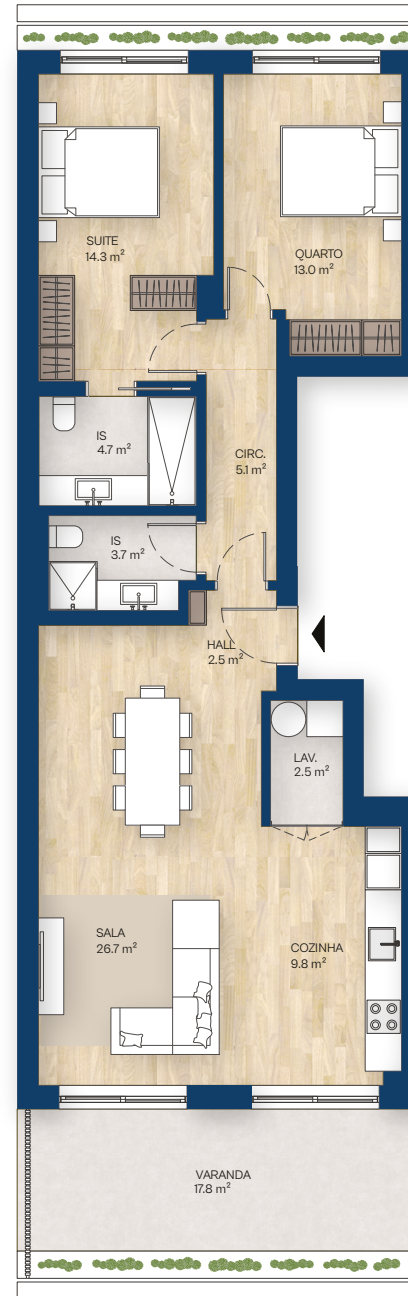


ÁREA BRUTA P. (M²) **97.6 m²**

ÁREA EXTERIOR (M²) **20.7 m²**

ESTACIONAMENTO (M²) **14.3 m²**

ARRECADAÇÕES (M²) **3.5 m²**



0 1 2m

