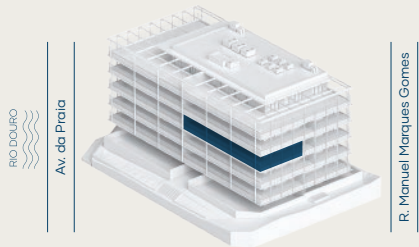


M1.A4S_T4

ÁREA TOTAL (M²) **283 m²**

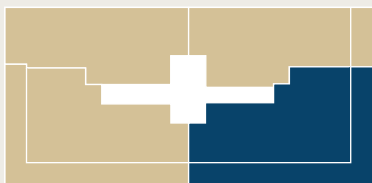


ÁREA BRUTA P. (M²) **158.8 m²**

ÁREA EXTERIOR (M²) **91.6 m²**

ESTACIONAMENTO (M²) **25.8 m²**

ARRECADAÇÕES (M²) **6.8 m²**



PISO 4



0 1 2m

