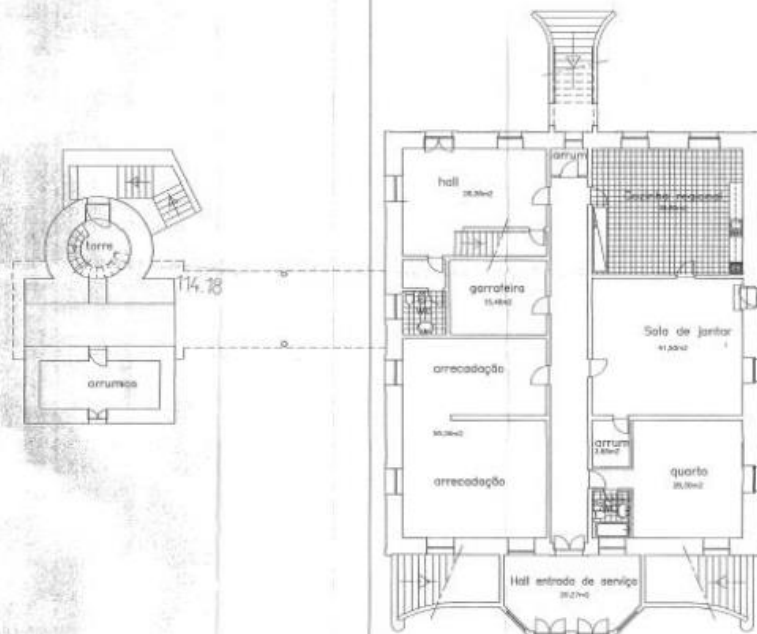
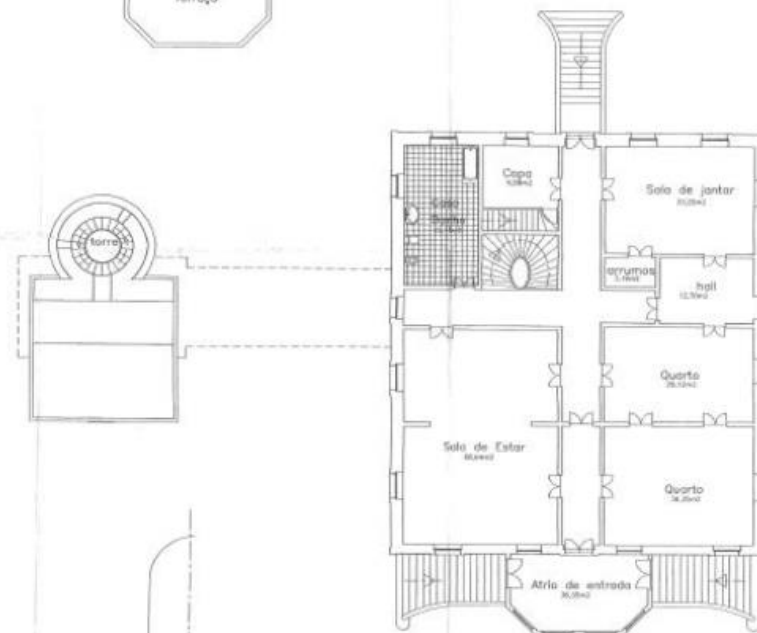




PLANTA DO 2º ANDAR

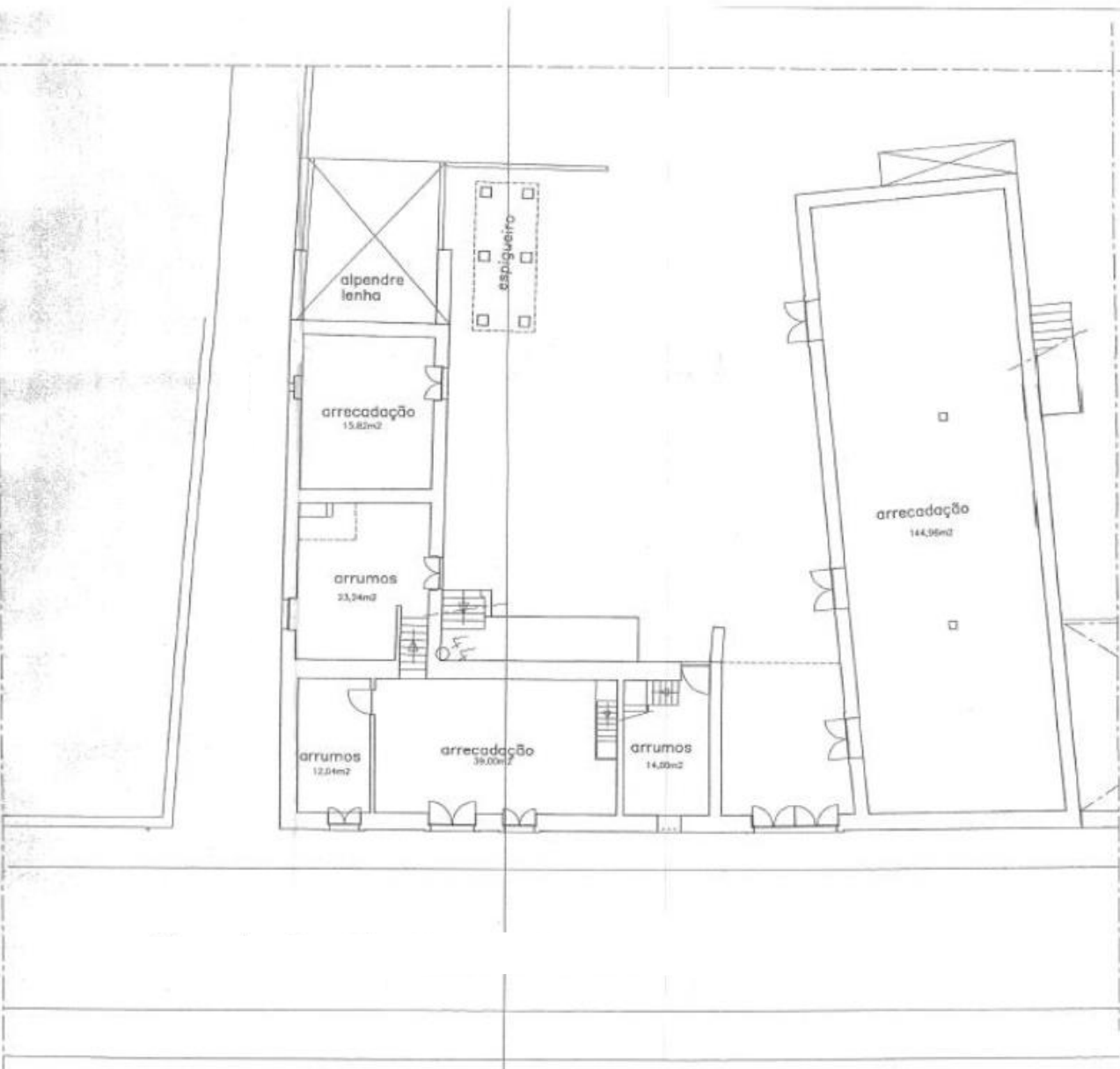


PLANTA DO R/CHÃO

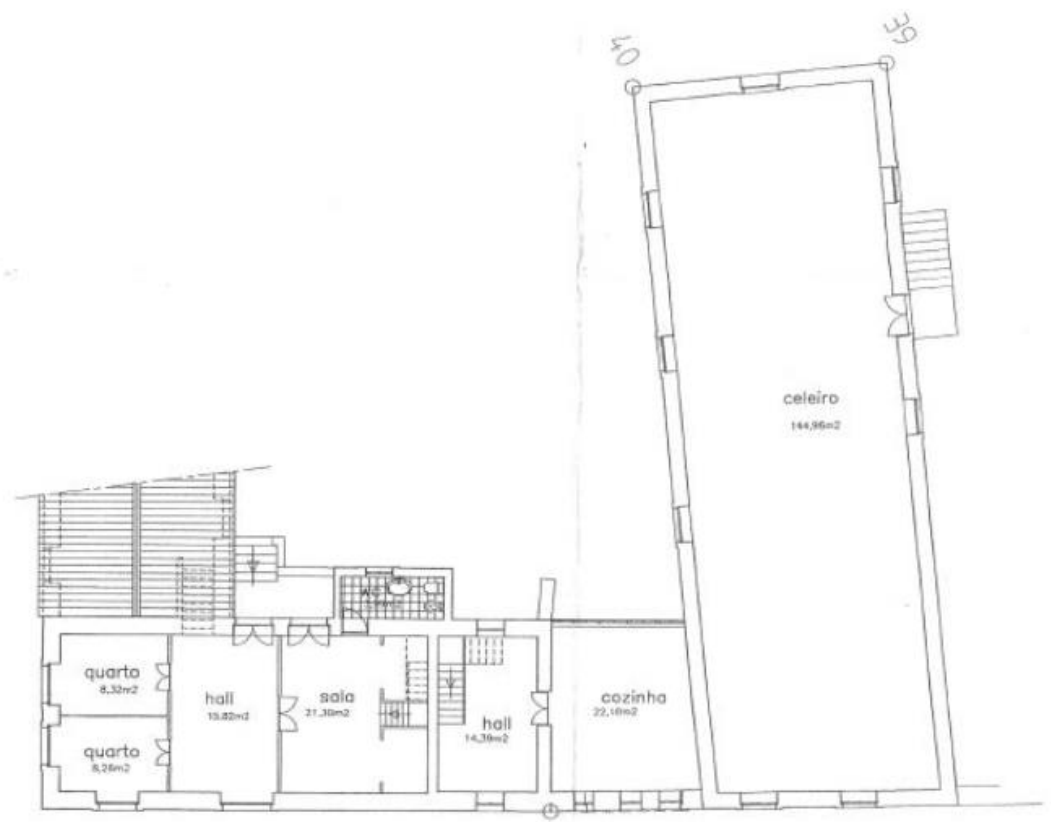


PLANTA DO 1º ANDAR

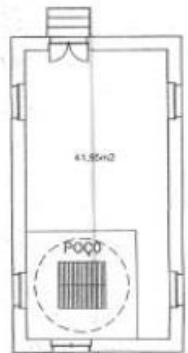
(AB) = 1.095,00 m²
 (AU) = 974,00 m²



PLANTA DO R/CHÃO



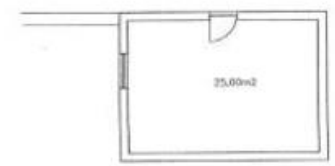
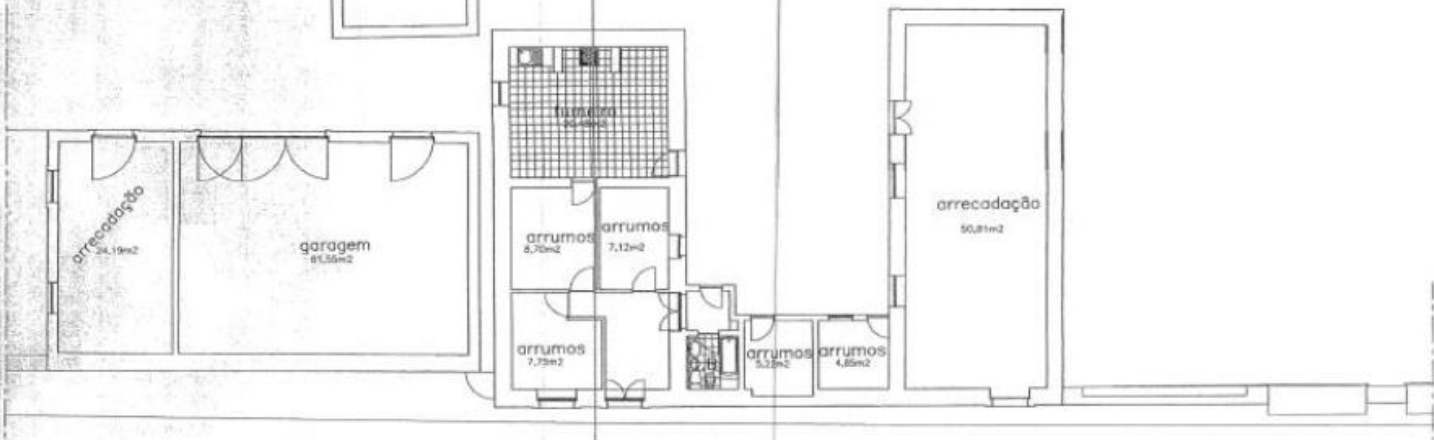
PLANTA DO 1º ANDAR



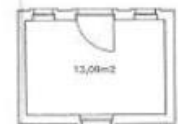
PLANTA DA CASA DO POÇO



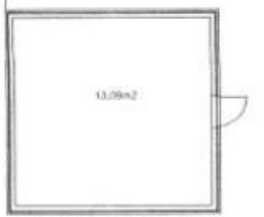
PLANTA DO LAGAR, CAVALARIÇA E ALPENDRE



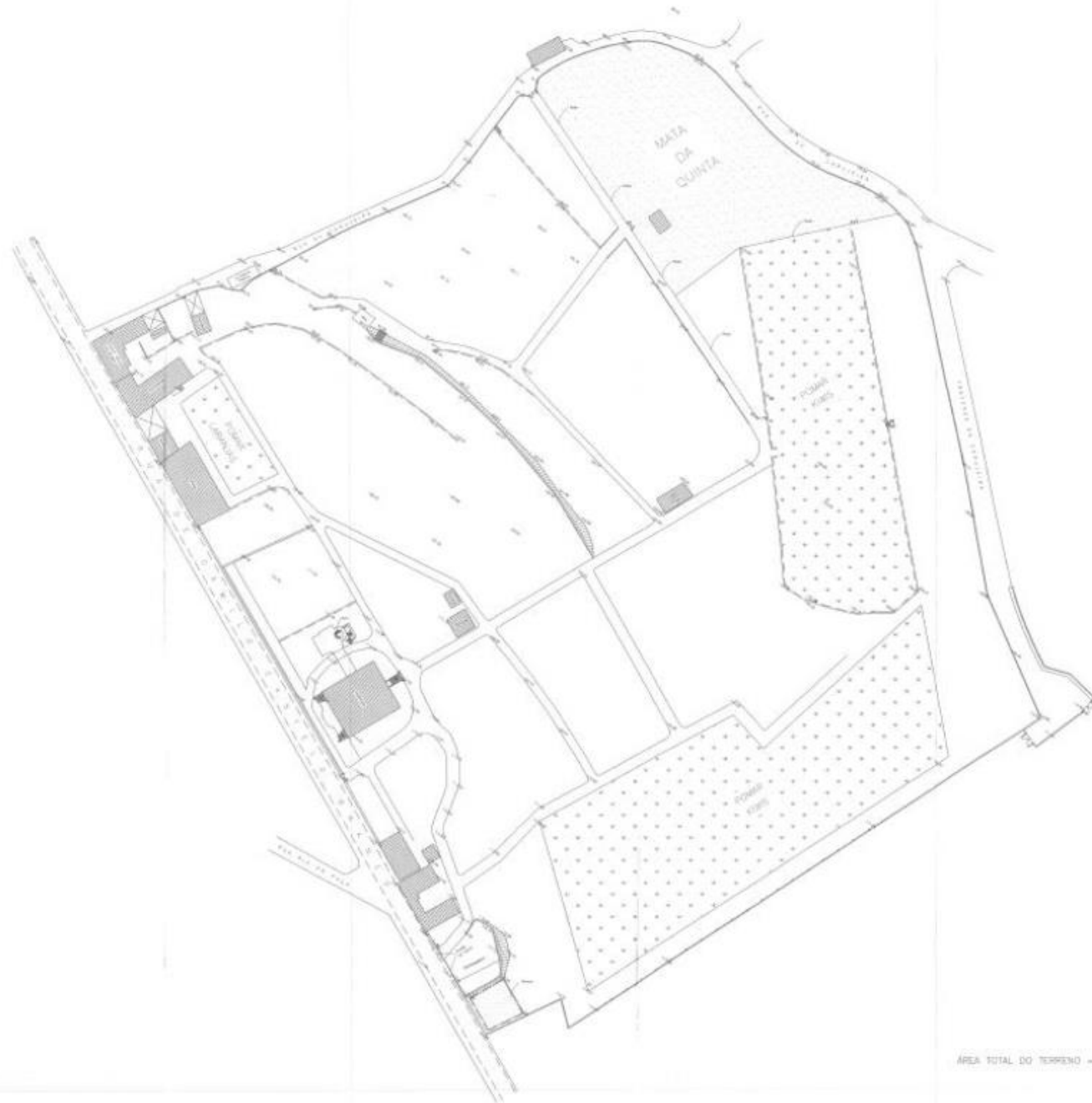
PLANTA DA ARRECADAÇÃO1



PLANTA DE ARRUMOS



PLANTA DA ESTUFA



ÁREA TOTAL DO TERRENO = 58.294,00 m²