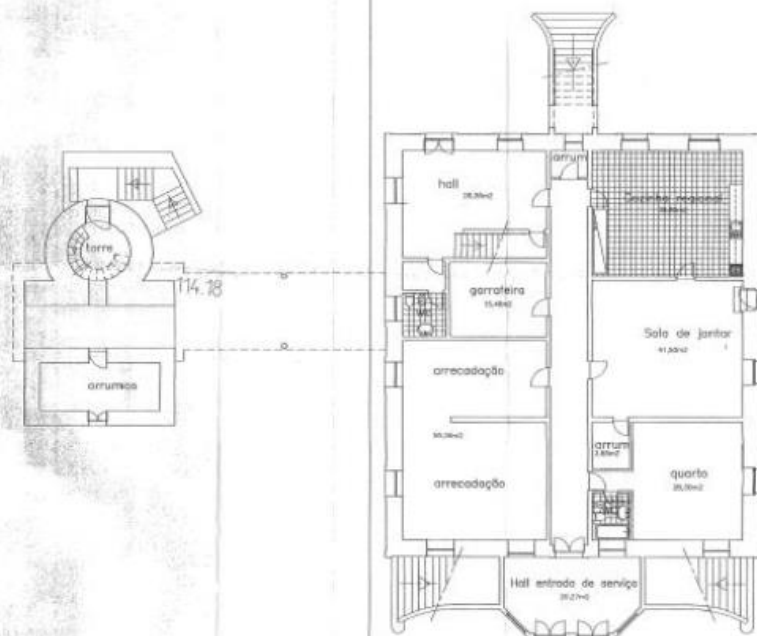
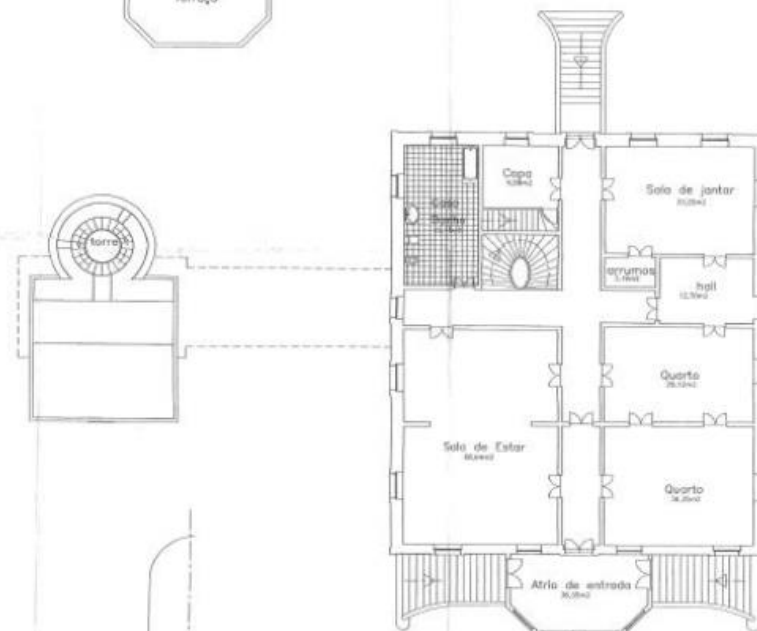




PLANTA DO 2º ANDAR



PLANTA DO R/CHÃO



PLANTA DO 1º ANDAR

Rua de Camilo Castelo Branco

Vila Paraso nº1057

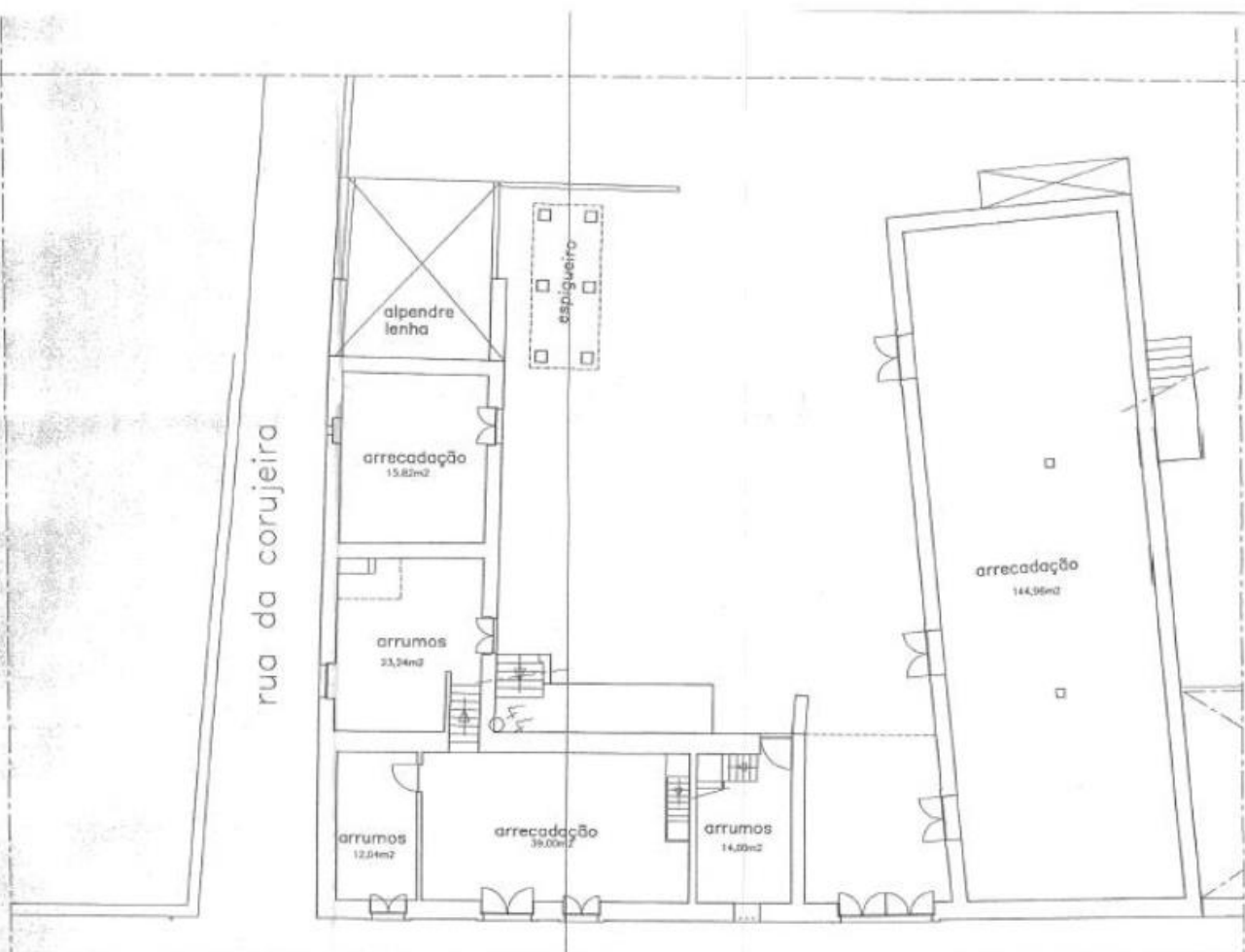
Ver planta de implantação das construções das nº1

Arquiteto: PONDIANO DOS SANTOS G. SERRANO  
 Rua Genésio Castelo Branco - 1027 Vila do Paraso  
 Arquitetos: V.N.GAIA

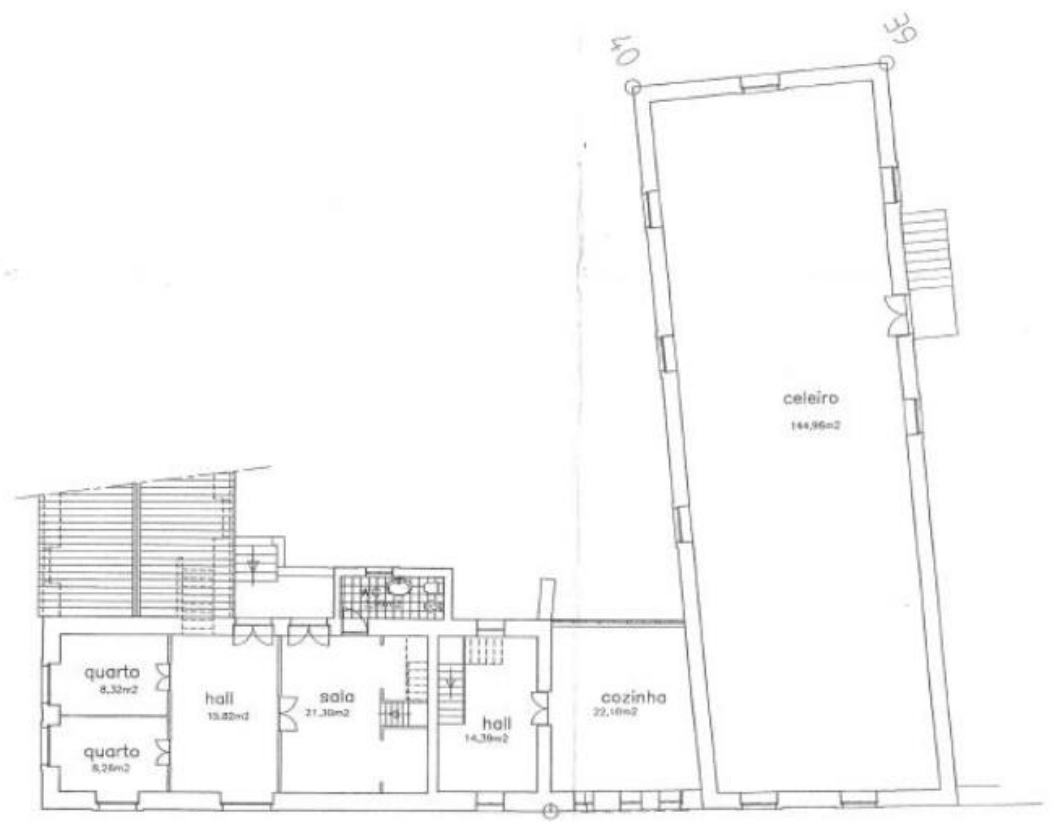
PLANTAS Construção nº 2  
 Casa da quinta

2

(AB) = 1.095,00 m<sup>2</sup>  
 (AU) = 974,00 m<sup>2</sup>



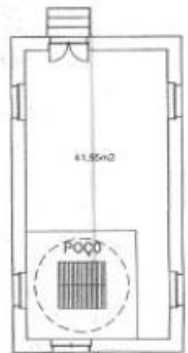
PLANTA DO R/CHÃO



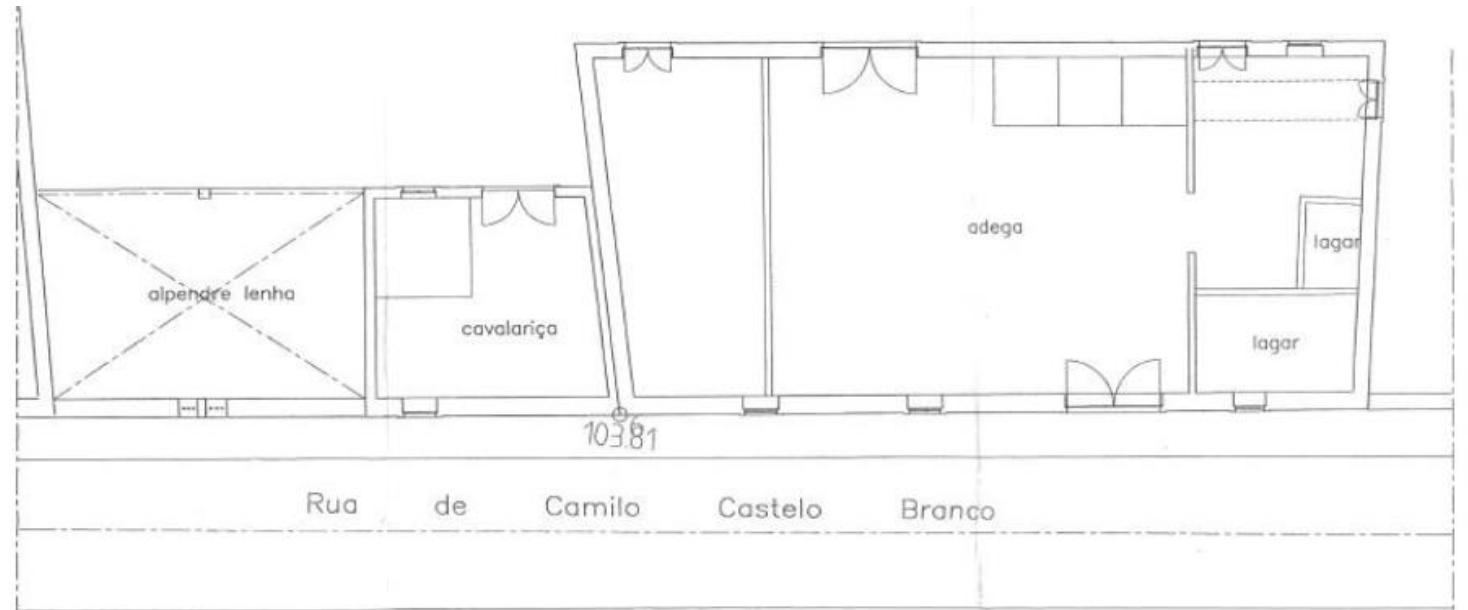
PLANTA DO 1º ANDAR

Ver planta de implantação das construções des nº1

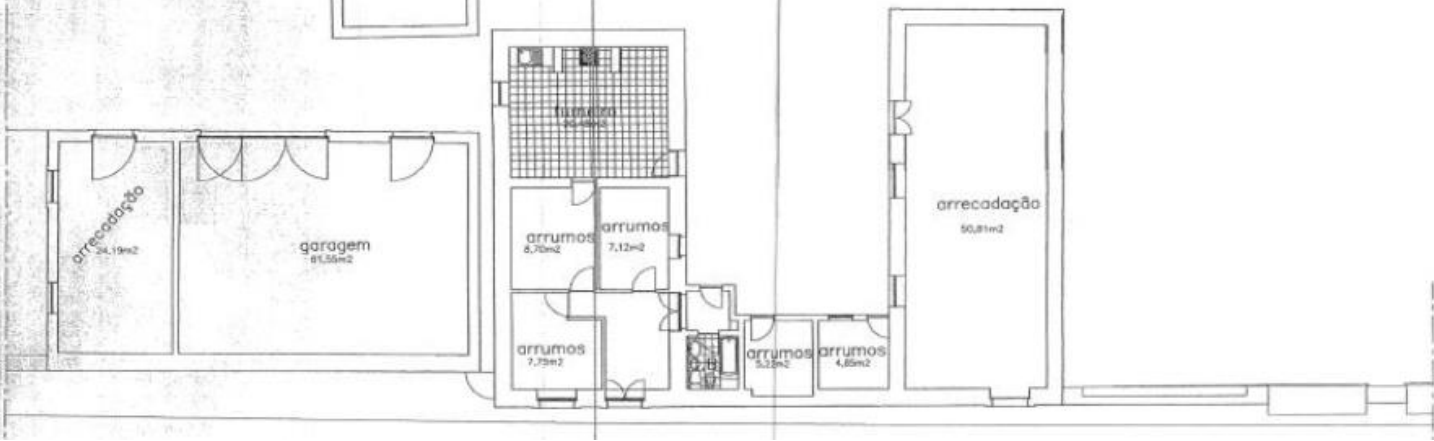
Projetista: <b>PONCIANO DOS SANTOS G. SERRANO</b>	Data: Janeiro 09	Escala: 1/100
Rua Camilo Castelo Branco, 1057 Vilar do Poroso	Distrito:	
Gulpihares V.N.GAIA		



PLANTA DA CASA DO POÇO



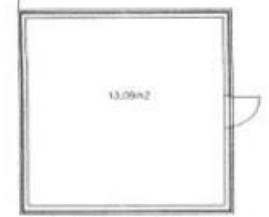
PLANTA DO LAGAR, CAVALARIÇA E ALPENDRE



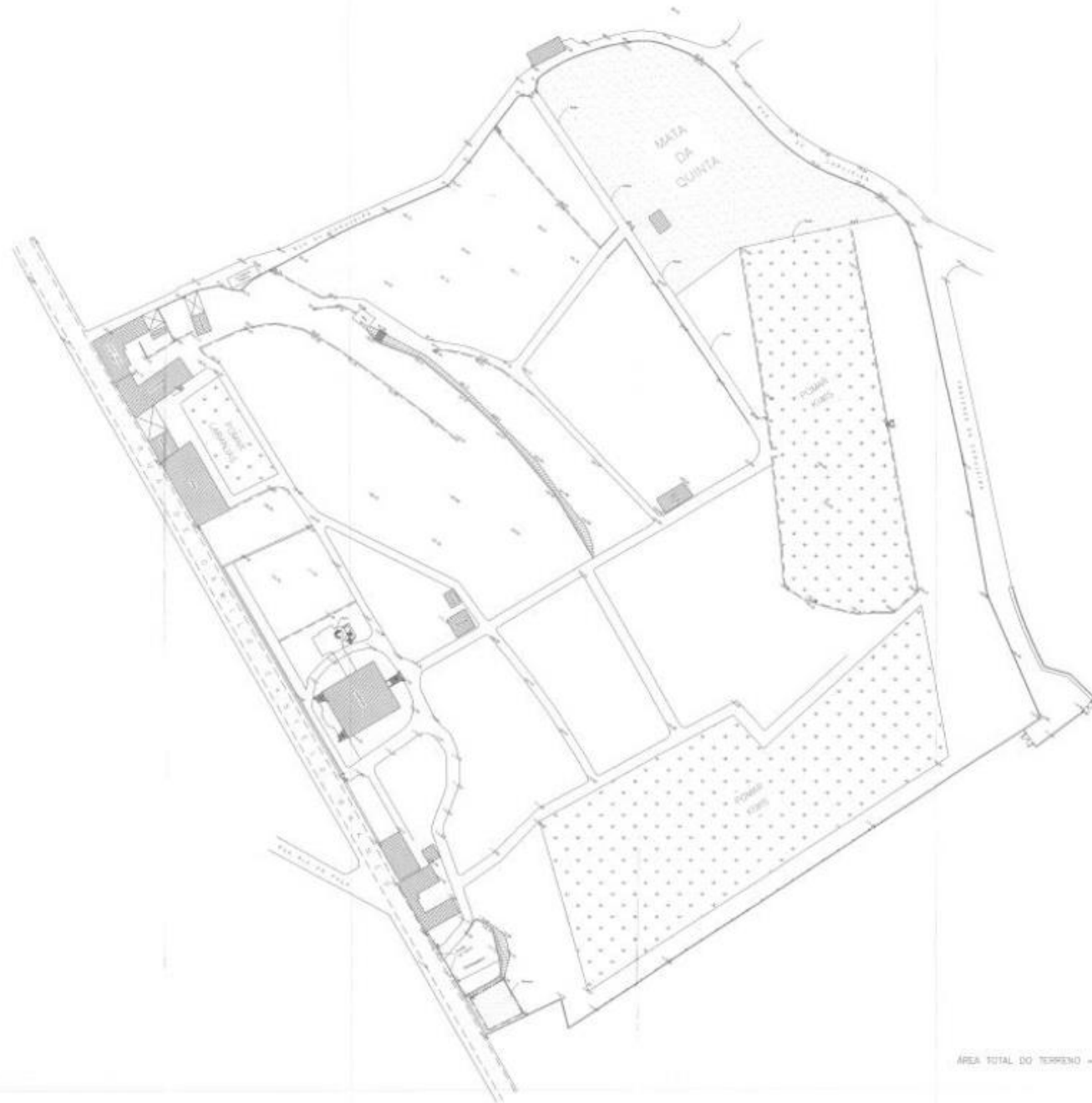
PLANTA DA ARRECADAÇÃO1



PLANTA DE ARRUMOS



PLANTA DA ESTUFA



ÁREA TOTAL DO TERRENO = 58.294,00 m<sup>2</sup>