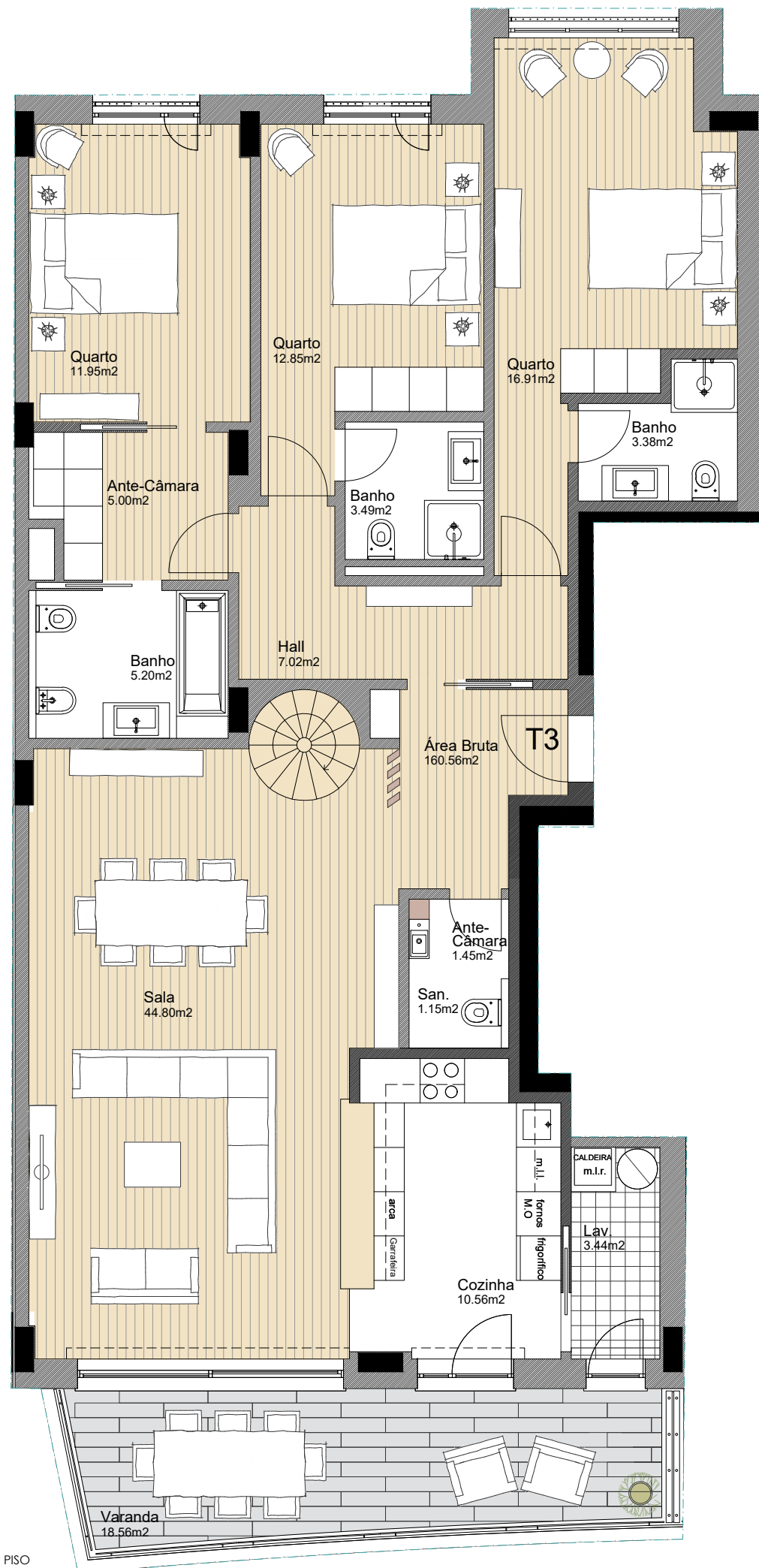


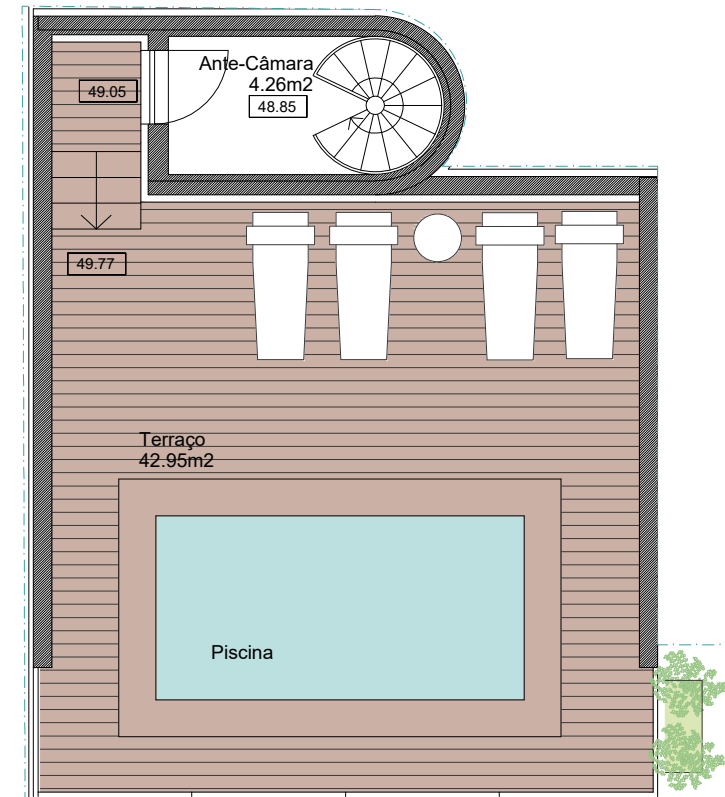
# 5º PORTO

URBAN LIVING

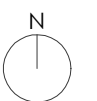
As áreas apresentadas são aproximadas, sem carácter contratual.  
 Les surfaces sont approximatives.  
 Document non contractuel et donné à titre informatif.  
 The areas here contained are approximate, and have no contractual nature.



PLANTA DO 7º PISO



PLANTA DE COBERTURA



RUA D. PEDRO V. - PORTO  
 ABP / SBP/ Gross Area: 160.56m2  
 Varandas/ Balcons/ Balconies: 18.56 + 42.95 = 61.51m2

# 5º PORTO

URBAN LIVING

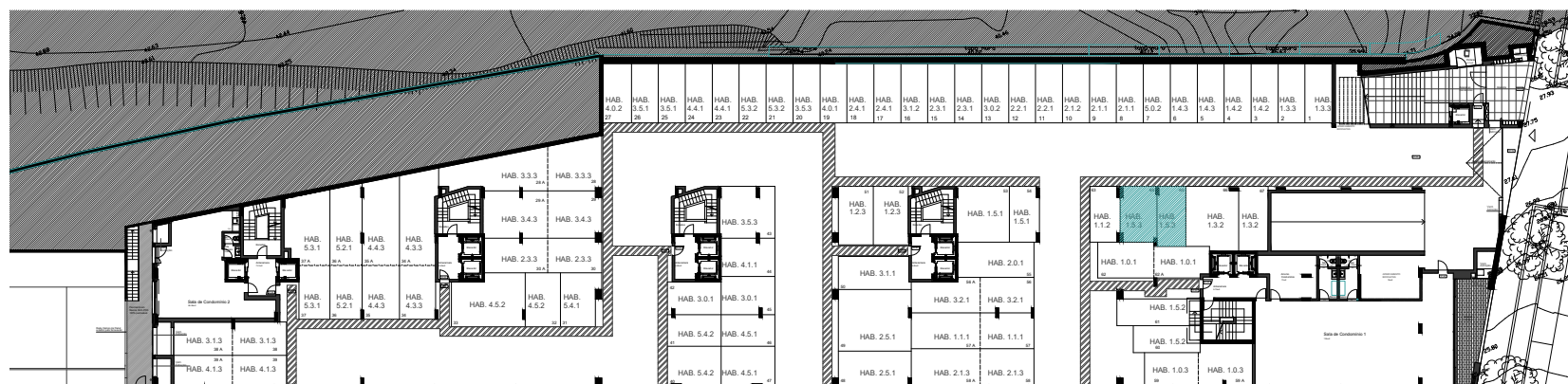
As áreas apresentadas são aproximadas, sem carácter contratual.  
 Les surfaces sont approximatives.  
 Document non contractuel et donné à titre informatif.  
 The areas here contained are approximate, and have no contractual nature.



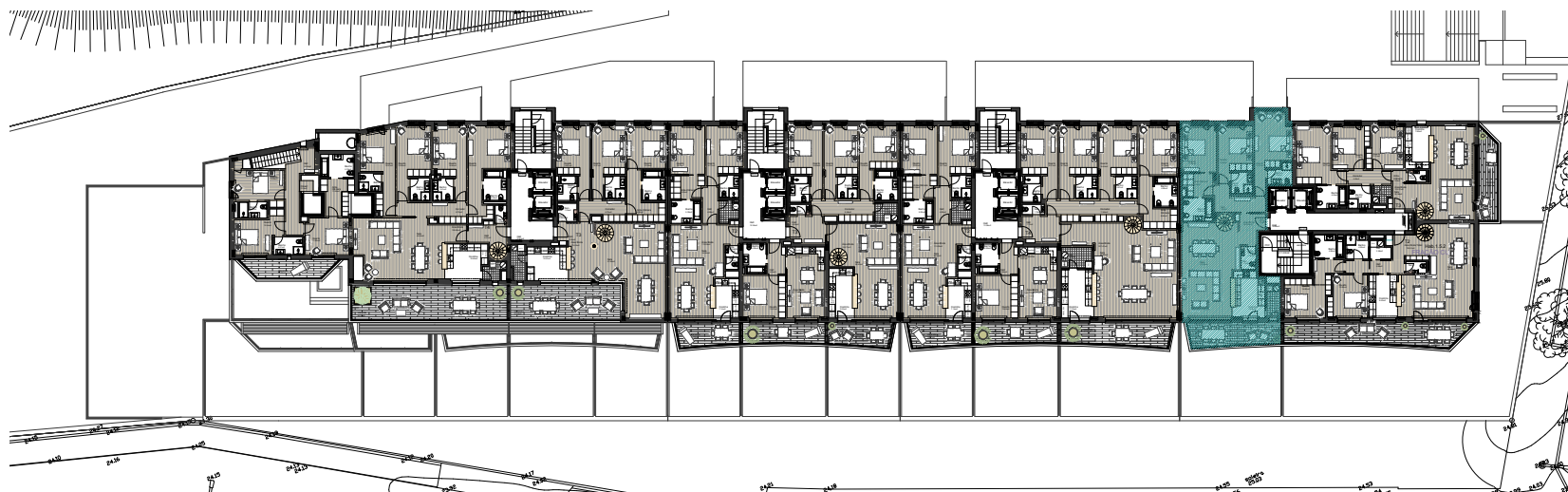
PISO -1 | ÉTAGE -1 | FLOOR -1



PISO 0 | ÉTAGE 0 | FLOOR 0



PISO 1 | ÉTAGE 1 | FLOOR 1



PLANTA DE LOCALIZAÇÃO - 7º ANDAR | ÉTAGE 7 | SEVENTH FLOOR



ALÇADO SUL - RUA CAPITÃO SALGUEIRO MAIA



PLANTA DE LOCALIZAÇÃO - COBERTURA | COVERTURE DU BÂTIMENT | ROOF TOP

