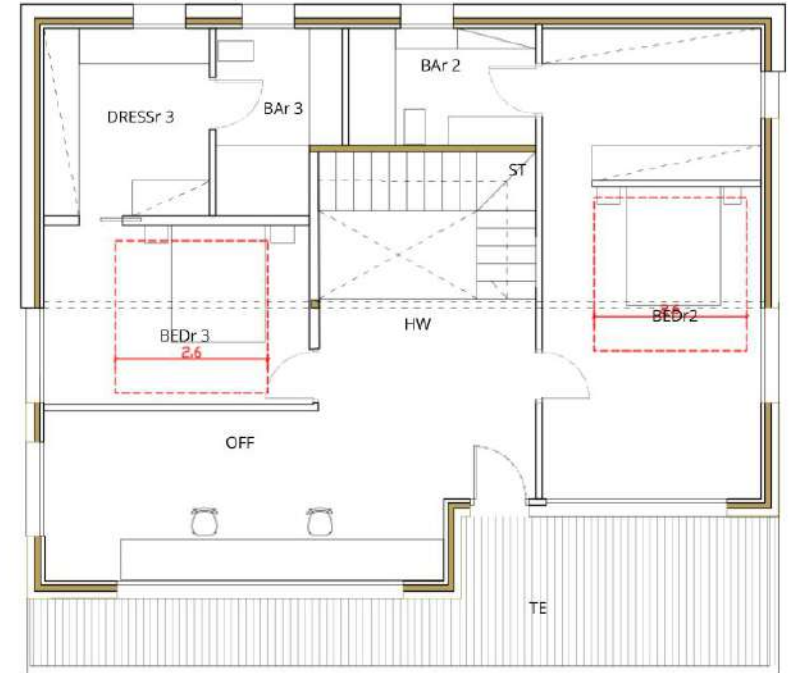


cot  
a  
0,00  
GROUND FLOOR:100



FIRST FLOOR 1:100

AREAS TABLE

CARPET AREAS GROUND FLOOR

LO LAU	LOBBY	14,16 m <sup>2</sup>
GBATHr	LAUNDRARY	3,79 m <sup>2</sup>
ST	GUEST BATHROOM	3,56 m <sup>2</sup>
Br-Dr 1	STAIR	4,32 m <sup>2</sup>
BATH-r	BEDROOM+DRESSING ROOM 1	19,36 m <sup>2</sup>
T Dr-Lr	BATHROOM 1	6,87 m <sup>2</sup>
K	DINNING-LIVING ROOM	37,02 m <sup>2</sup>
	KITCHEN	10,71 m <sup>2</sup>

OUTDOOR AREAS GROUND FLOOR

P1	PORCH 1 PORCH 2 TOTAL	7,25 m <sup>2</sup>
P2	OUTDOORS AREAS	24,21 m <sup>2</sup>
Total		15,73m <sup>2</sup>

CARPET AREAS FIRST FLOOR

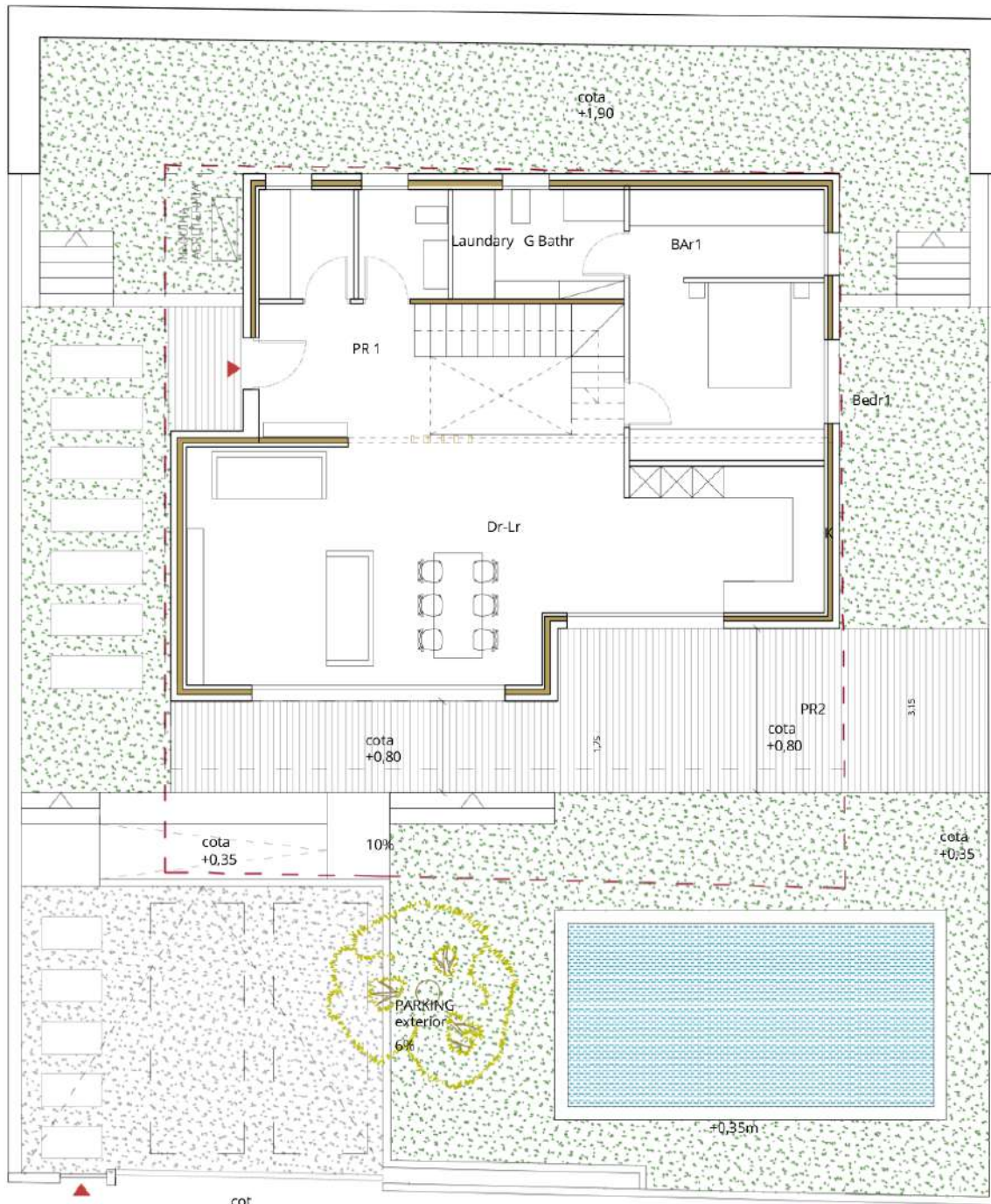
ST	STAIR	6,13 m <sup>2</sup>
HW	HALLWAY	9,40 m <sup>2</sup>
OFF	OFFICE	19,67 m <sup>2</sup>
BE2	BEDROOM 2	30,16 m <sup>2</sup>
BA2	BATHROOM 2	6,40 m <sup>2</sup>
BER3	BEDROOM 3	13,81 m <sup>2</sup>
DR3	DRESSING ROOM 3	9,65 m <sup>2</sup>
BA3	BATHROOM 3	6,56 m <sup>2</sup>

OUTDOOR AREAS FIRST FLOOR

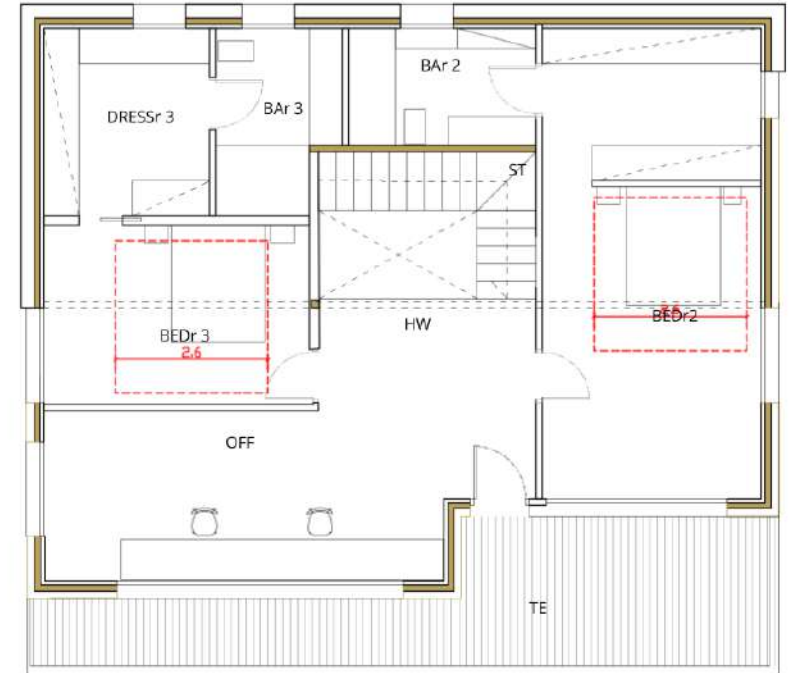
TE	TERRACE	11,04 m <sup>2</sup>
----	---------	----------------------

Total	TOTAL CARPET AREA	201,57 m <sup>2</sup>
-------	-------------------	-----------------------

Total	TOTAL BUILT-UP AREA	237,57 m <sup>2</sup>
Total	TOTAL BUILT-UP AREA + outdoor	264,34 m <sup>2</sup>
Total	TOTAL BUILT-UP AREA ground floor for urbanistic law	146,69 m <sup>2</sup>



cot  
a  
0,00  
GROUND FLOOR:100



FIRST FLOOR 1:100

AREAS TABLE

CARPET AREAS GROUND FLOOR

LO LAU	LOBBY	14,16 m <sup>2</sup>
GBATHr	LAUNDRARY	3,79 m <sup>2</sup>
ST	GUEST BATHROOM	3,56 m <sup>2</sup>
Br-Dr 1	STAIR	4,32 m <sup>2</sup>
BATHr	BEDROOM+DRESSING ROOM 1	19,36 m <sup>2</sup>
T Dr-Lr	BATHROOM 1	6,87 m <sup>2</sup>
K	DINNING+LIVING ROOM	37,02 m <sup>2</sup>
	KITCHEN	10,71 m <sup>2</sup>

OUTDOOR AREAS GROUND FLOOR

P1	PORCH 1 PORCH 2 TOTAL	7,25 m <sup>2</sup>
P2	OUTDOORS AREAS	24,21 m <sup>2</sup>
Total		15,73 m <sup>2</sup>

CARPET AREAS FIRST FLOOR

ST	STAIR	6,13 m <sup>2</sup>
HW	HALLWAY	9,40 m <sup>2</sup>
OFF	OFFICE	19,67 m <sup>2</sup>
BE2	BEDROOM 2	30,16 m <sup>2</sup>
BA2	BATHROOM 2	6,40 m <sup>2</sup>
BER3	BEDROOM 3	13,81 m <sup>2</sup>
DR3	DRESSING ROOM 3	9,65 m <sup>2</sup>
BA3	BATHROOM 3	6,56 m <sup>2</sup>

OUTDOOR AREAS FIRST FLOOR

TE	TERRACE	11,04 m <sup>2</sup>
----	---------	----------------------

Total	TOTAL CARPET AREA	201,57 m <sup>2</sup>
-------	-------------------	-----------------------

Total	TOTAL BUILT-UP AREA	237,57 m <sup>2</sup>
Total	TOTAL BUILT-UP AREA + outdoor	254,34 m <sup>2</sup>
Total	TOTAL BUILT-UP AREA ground floor for urbanistic law	146,69 m <sup>2</sup>