



BLOCK D6. PENTHOUSE FLOOR 'RIGHT'

3R+3B

Uncovered terrace	142,80 m ²
Covered terrace	14,50 m ²
Constructed area	206,22 m ²



The present document has strictly informative character. It may suffer variations for technical, legal and/or urban requirements. The furniture is purely informative. All measurements are approximate.

GRAPHIC ESCALE

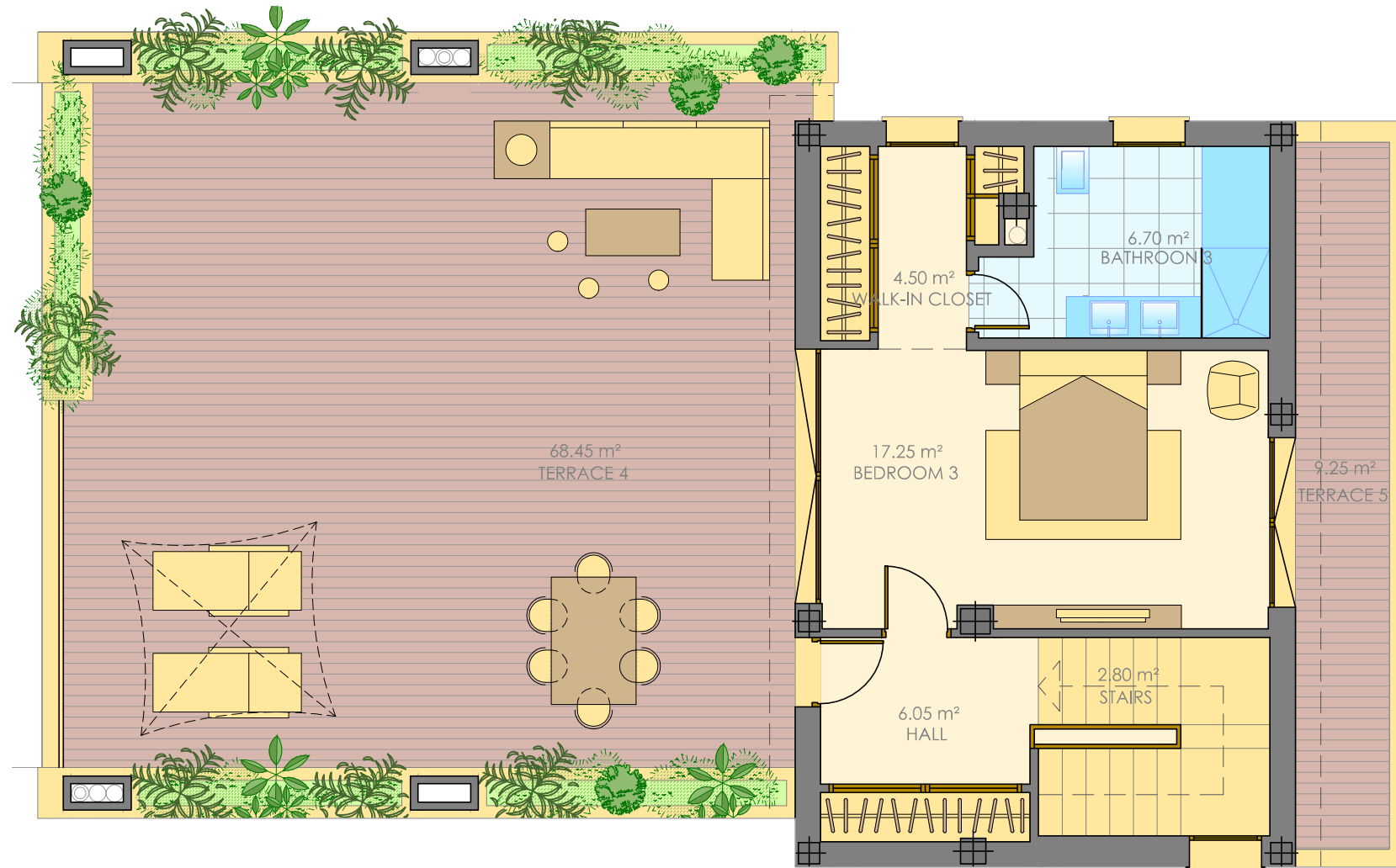


PROJECTS:



PROMOTES:





BLOCK D6. PENTHOUSE FLOOR 'RIGHT'

3R+3B

Uncovered terrace	142,80 m ²
Covered terrace	14,50 m ²
Constructed area	206,22 m ²



The present document has strictly informative character. It may suffer variations for technical, legal and/or urban requirements. The furniture is purely informative. All measurements are approximate.

GRAPHIC ESCALE



PROJECTS:



PROMOTES:

