

# THE LIST

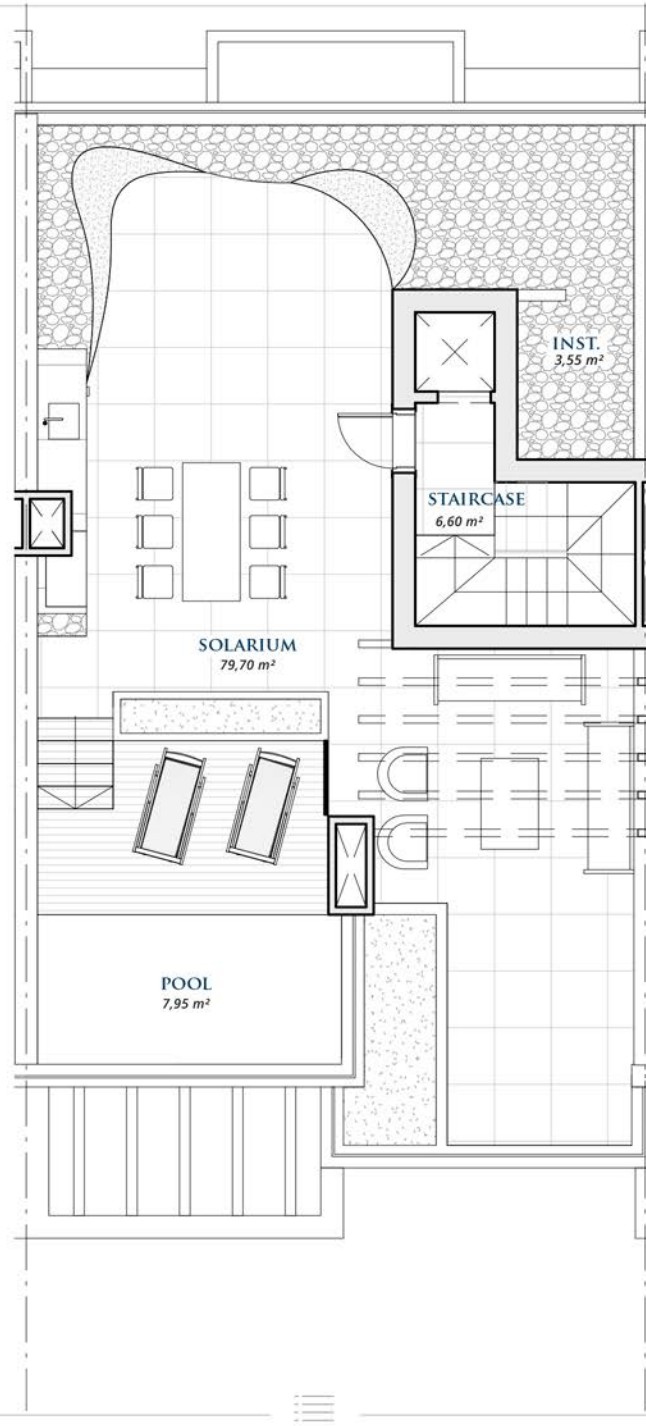
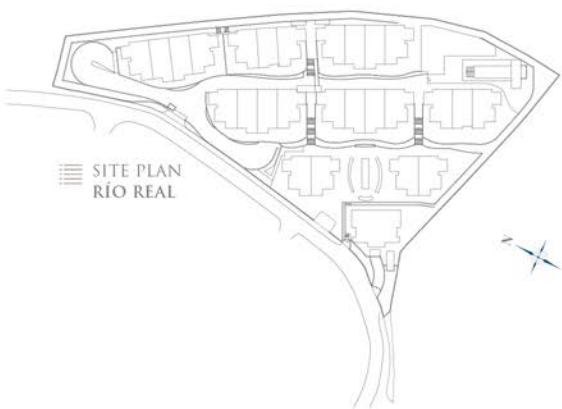
SINGULAR HOMES

- RÍO REAL -

## A FLOOR PLAN

## ROOF FLOOR

- HOUSE TYPE A -



### ROOF FLOOR

Closed Area 12,00 m<sup>2</sup>

Terrace 104,00 m<sup>2</sup>

**TOTAL BUILT AREA: 116,00 m<sup>2</sup>**

GRAPHIC SCALE 1:100



# THE LIST

SINGULAR HOMES

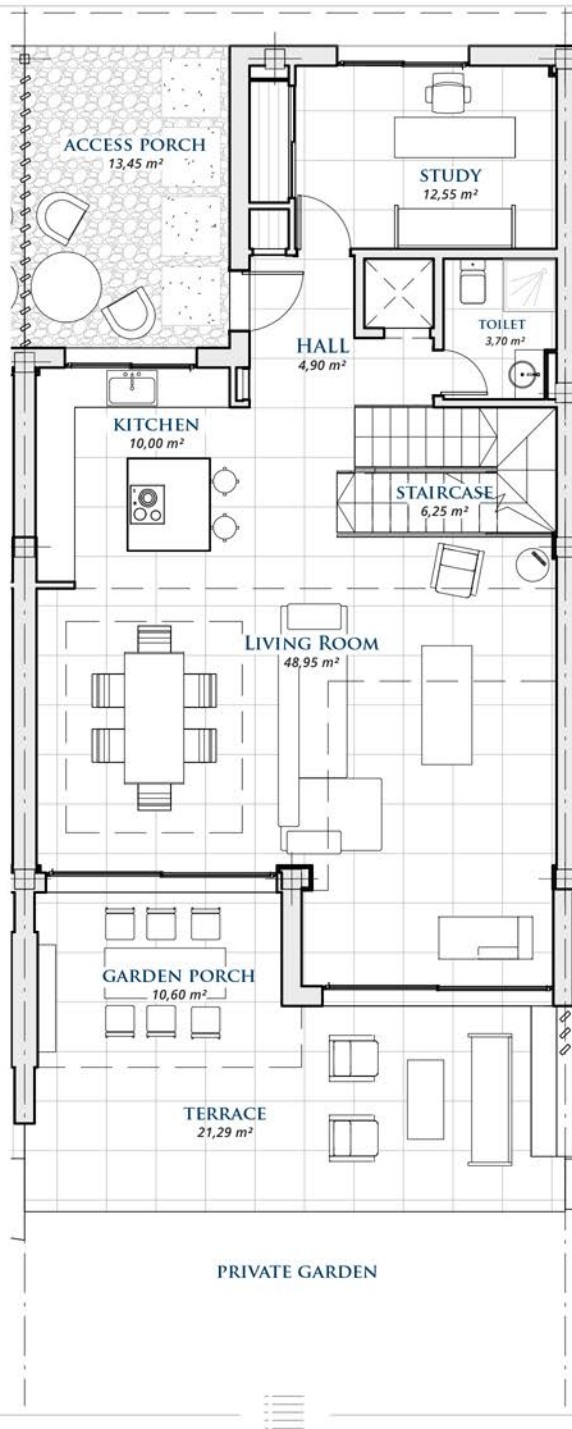
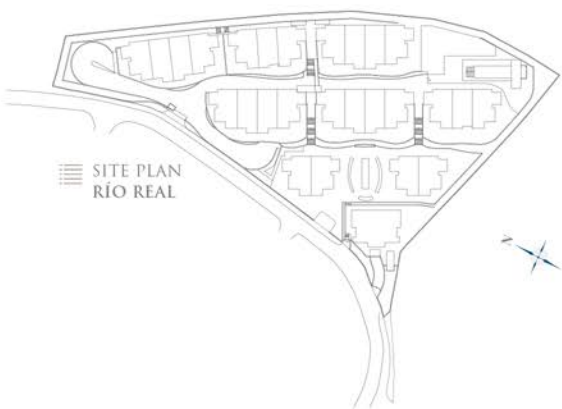
- RÍO REAL -

## A

### FLOOR PLAN

## GROUND FLOOR

- HOUSE TYPE A -



### GROUND FLOOR

Living Area 105,35 m<sup>2</sup>

Terrace 43,30 m<sup>2</sup>

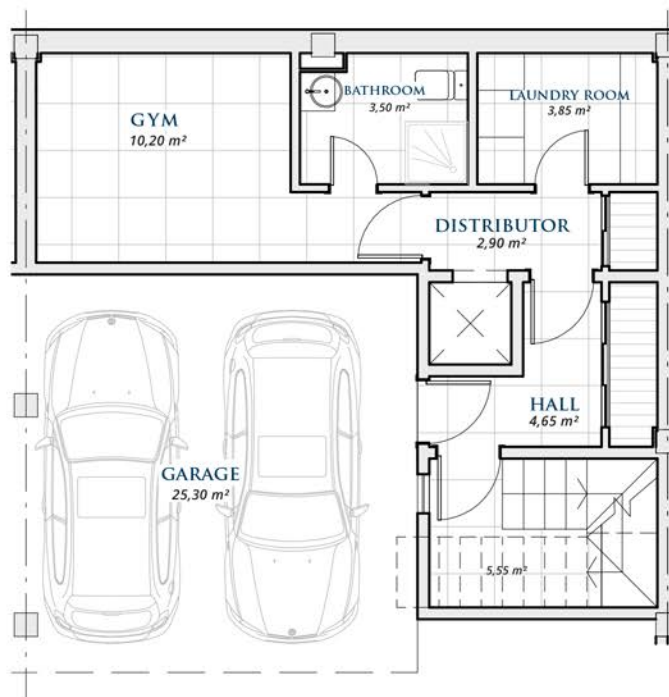
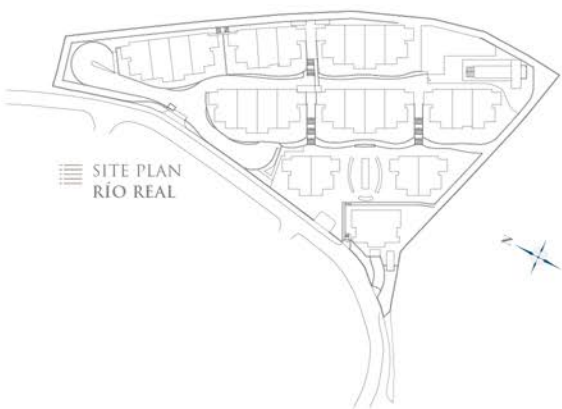
**TOTAL BUILT AREA: 148,65 m<sup>2</sup>**

GRAPHIC SCALE 1:100



A  
FLOOR PLAN

BASEMENT  
- HOUSE TYPE A -



BASEMENT

Basement	39,67 m <sup>2</sup>
Garage	23,65 m <sup>2</sup>
<b>TOTAL BUILT AREA:</b>	<b>63,32 m<sup>2</sup></b>

\* Basements are subject to modifications due to installation requirements.

GRAPHIC SCALE 1:100



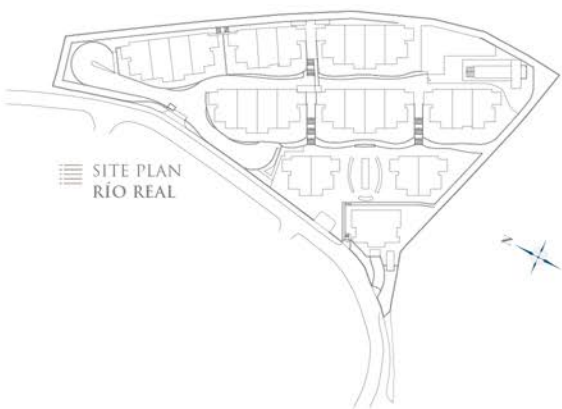
# THE LIST

SINGULAR HOMES

- RÍO REAL -

## A FLOOR PLAN

## FLOORS - HOUSE TYPE A -



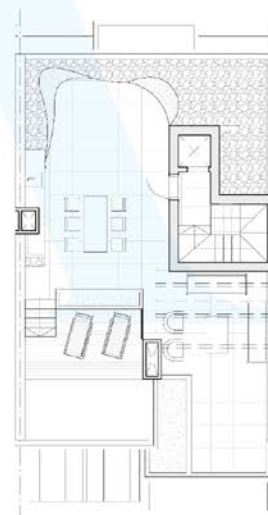
- BASEMENT -



- GROUND FLOOR -



- FIRST FLOOR -



- ROOF FLOOR -

TOTAL USEFUL AREA:  
**374,44 m<sup>2</sup>**

TOTAL USEFUL AREA  
ACCORDING TO RD 218/2005:  
**253,77 m<sup>2</sup>**

### BUILT AREA

LIVING AREA 217,35 m<sup>2</sup>

TERRACES 157,80 m<sup>2</sup>

BASEMENT 63,32 m<sup>2</sup>

PRIVATE GARDEN 34,31 m<sup>2</sup>

TOTAL BUILT AREA: **438,47 m<sup>2</sup>**