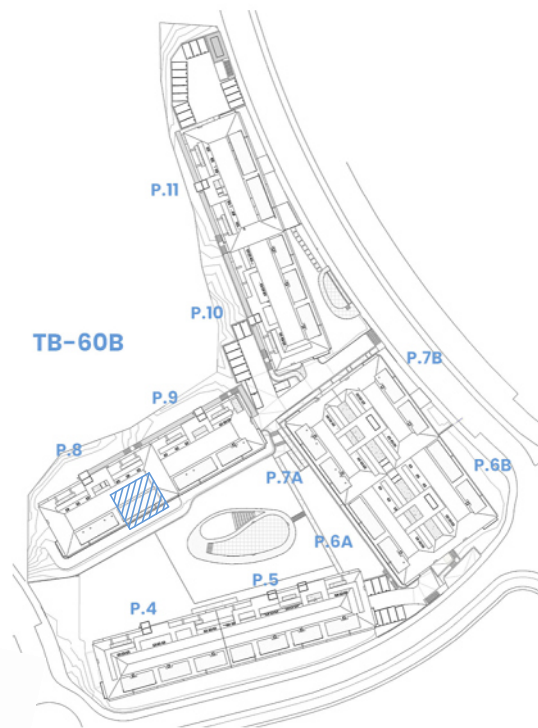




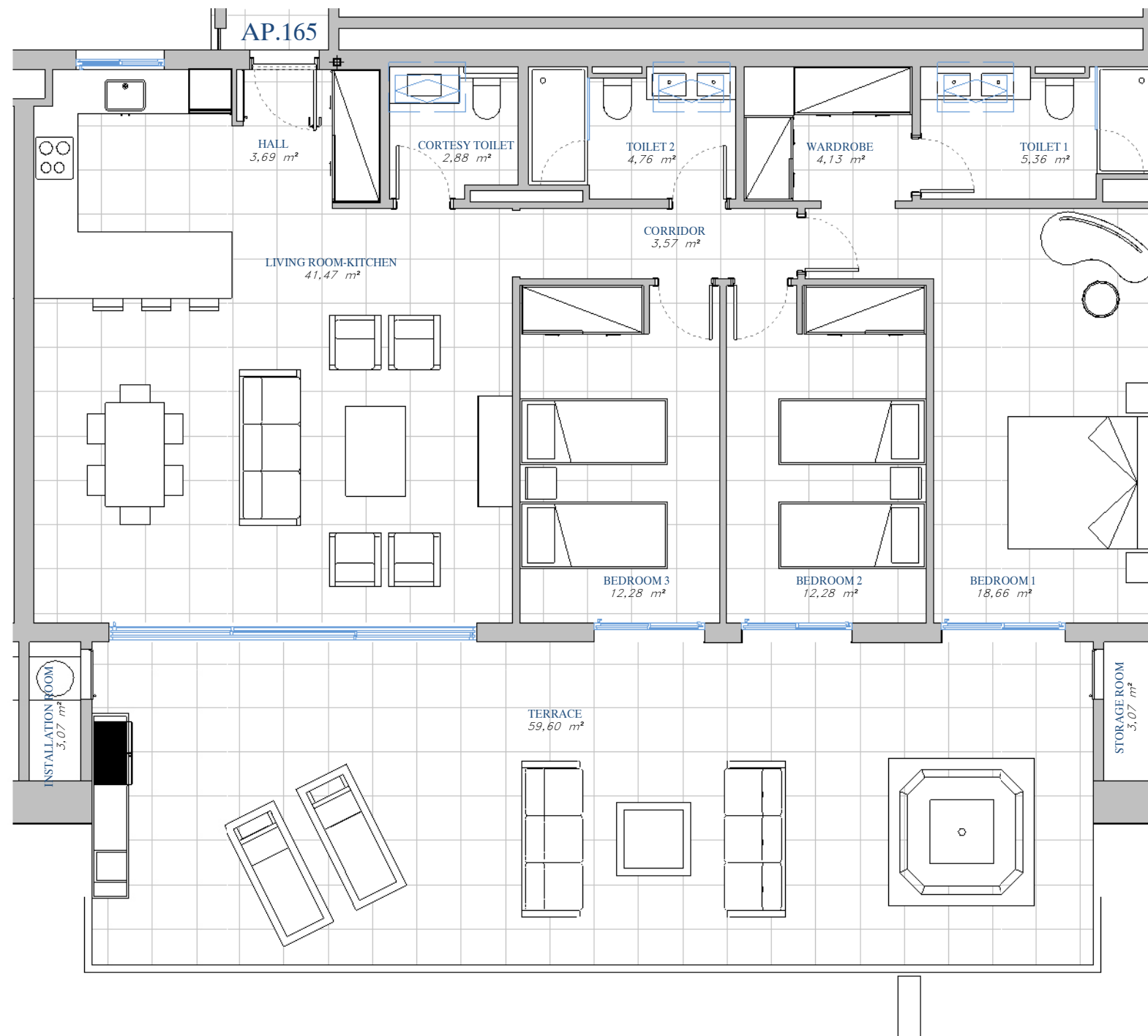
LOMAS DEL HIGUERÓN
by TOP GESTIÓN

LOMAS 5

PORTAL 8
AP.Nº165 ATTIC



SITE PLAN



ACCORDING TO DECRETO 218/2005

Useful Area	126,74 m ²
Built Area	160,77 m ²

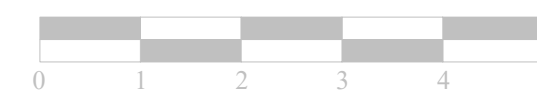
BUILT AREA

Living Area	124,24 m ²
Terrace Area	69,54 m ²
TOTAL BUILT AREA:	193,79 m²



GRAPHIC SCALE

1 : 75



"This plan may be modified according to the development of the Execution Project and the construction. It does not constitute a contractual document. The reflected furnishing is for decoration purposes only. The Project Management reserves the right to make the necessary changes for functional, esthetic and legal reasons that may occur, without implying a decrease in the quality of the construction."