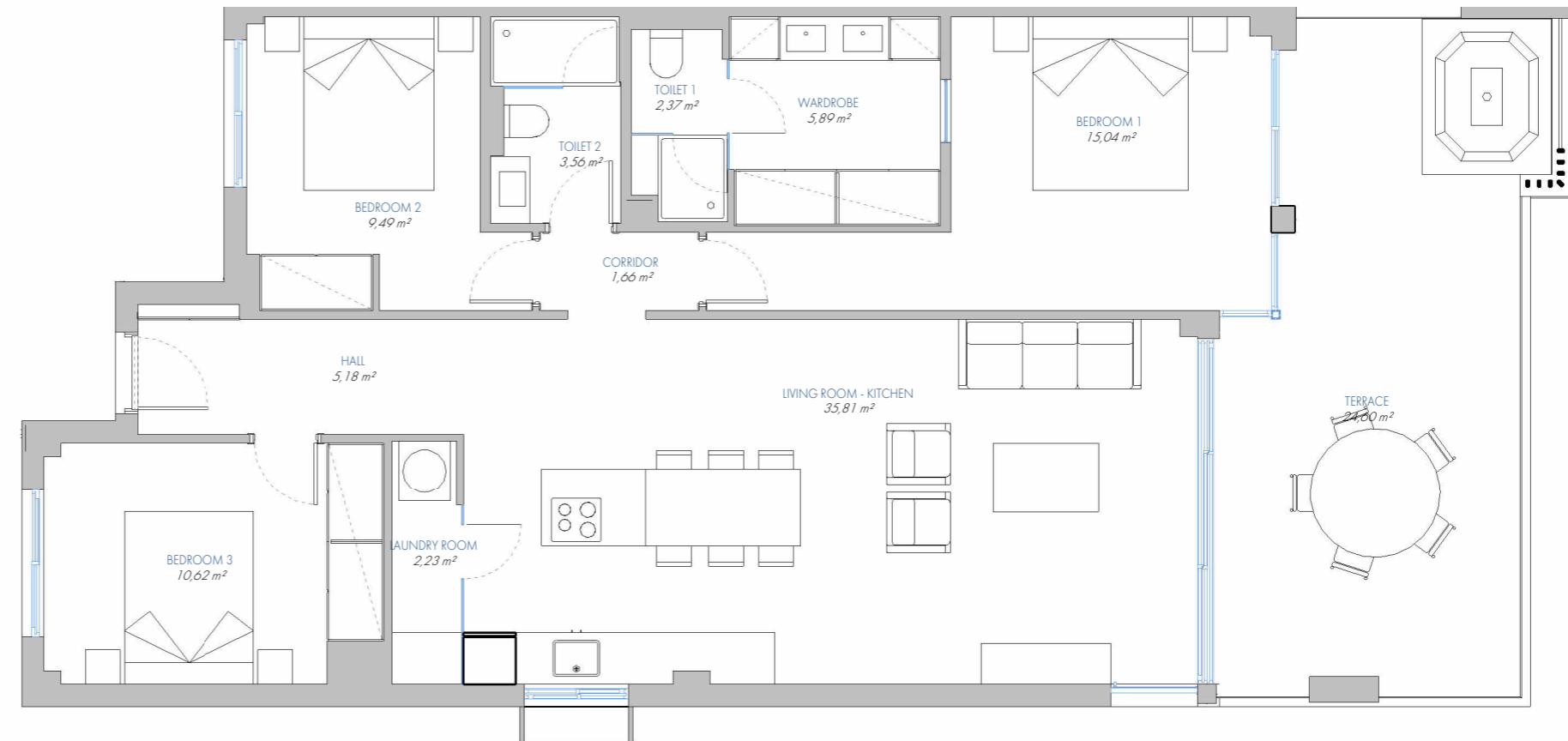


LOMAS UNIQUE

UNIQUE APARTMENT Nº 194

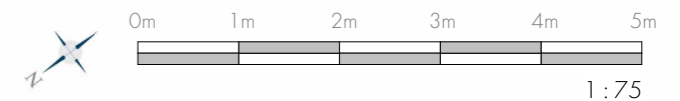
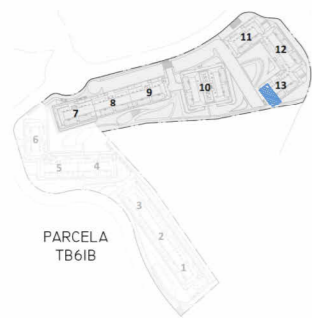
13.P2.A



BUILT AREA	
Living Area	106,03 m ²
Terrace Area	27,19 m ²
TOTAL BUILT AREA:	133,22 m²

ACCORDING TO D. 218/2005

Useful Area	101,04 m ²
Built Area	134,71 m ²



1:75