

LOMAS UNIQUE

UNIQUE GARDEN VILLA N° 190

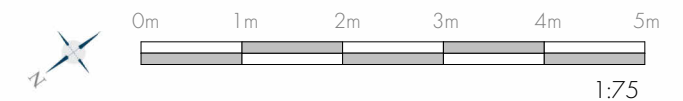
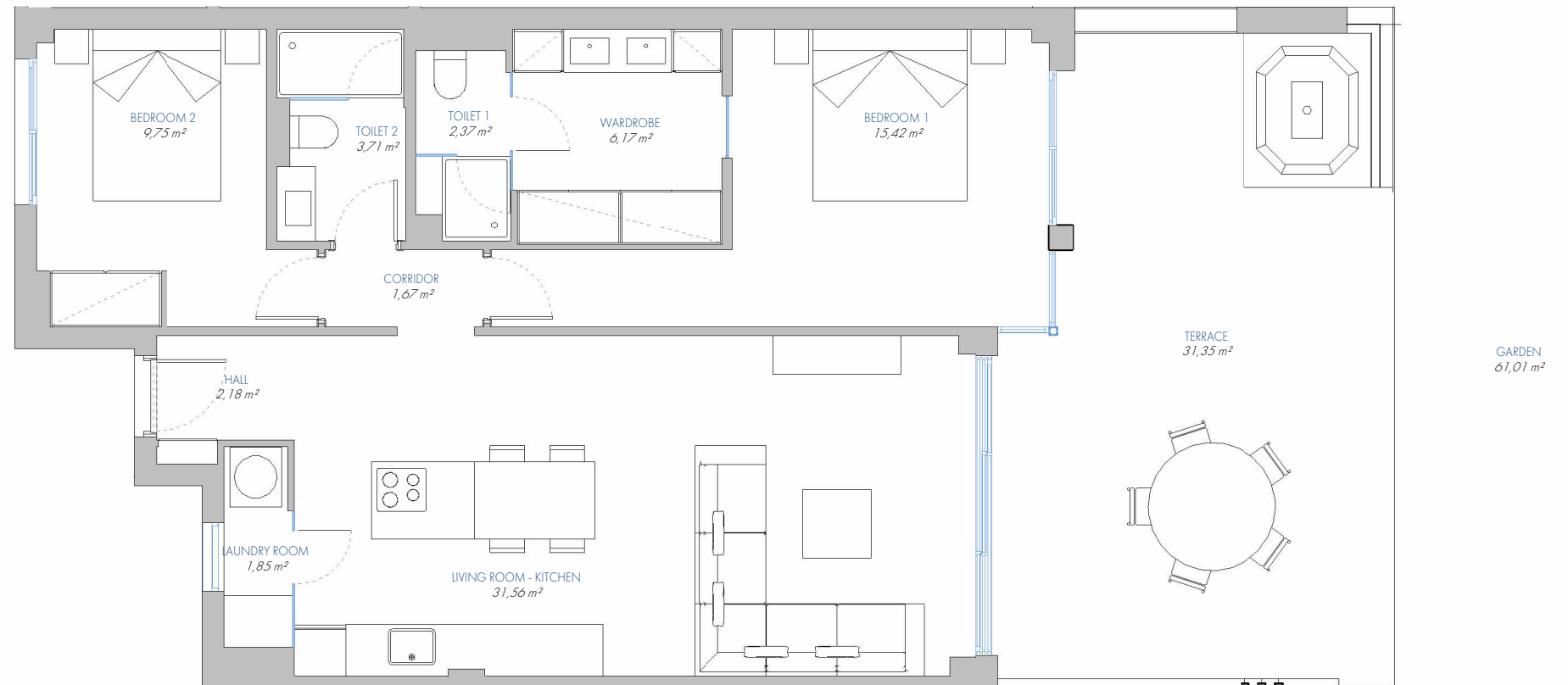
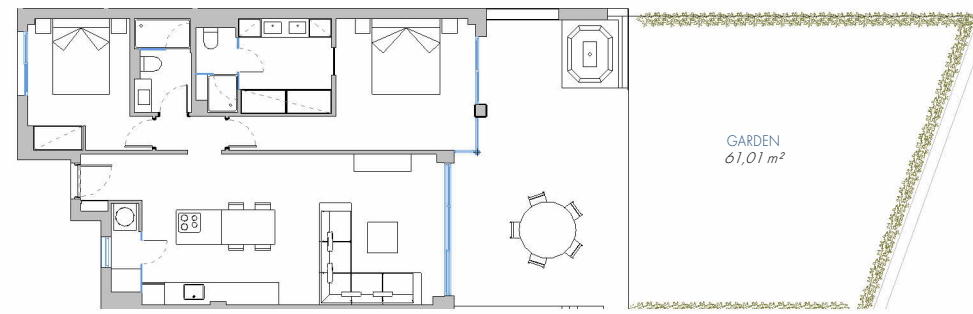
13.PB.C

BUILT AREA

| | |
|--------------------------|-----------------------------|
| Living Area | 87,26 m ² |
| Terrace Area | 33,71 m ² |
| Garden | 65,41 m ² |
| TOTAL BUILT AREA: | 186,39 m² |

ACCORDING TO D. 218/2005

| | |
|-------------|-----------------------|
| Useful Area | 82,15 m ² |
| Built Area | 110,77 m ² |



(*) This plan may be modified depending on progress of the development. The furniture shown is purely for decorative purposes. The project manager reserves the right to make the necessary changes for any possible functional, aesthetic and legal reasons, without this negatively affecting the quality of the construction. Illustrative dimensions