

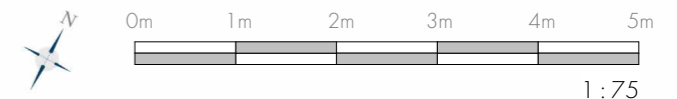
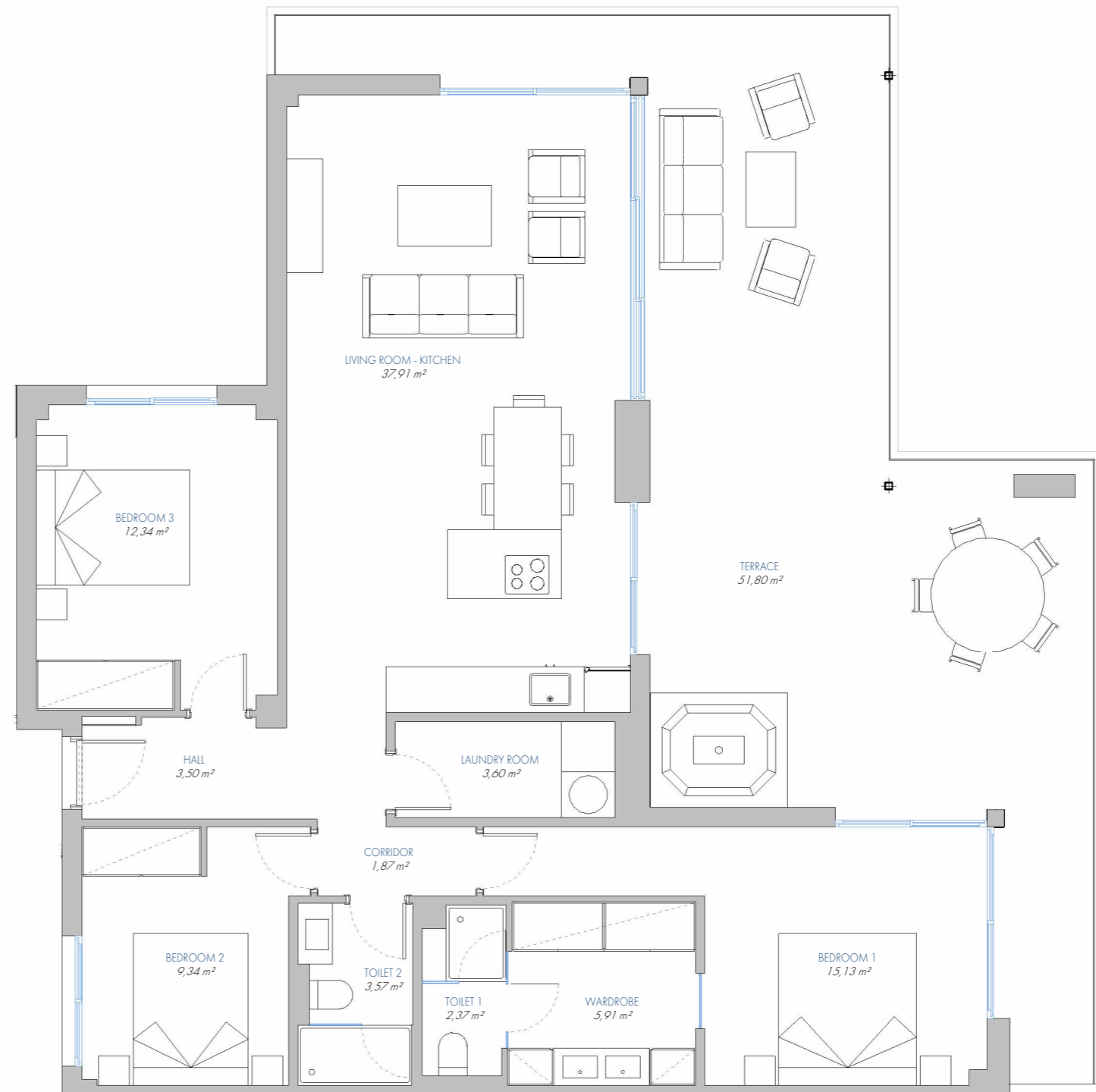
LOMAS UNIQUE

UNIQUE APARTMENT Nº 179

12.P1.E

BUILT AREA	
Living Area	110,58 m ²
Terrace Area	56,96 m ²
TOTAL BUILT AREA:	167,54 m²

ACCORDING TO D. 218/2005	
Useful Area	105,09 m ²
Built Area	140,46 m ²



1:75