

LOMAS UNIQUE

UNIQUE APARTMENT Nº 177

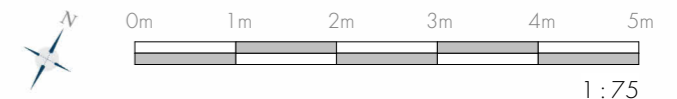
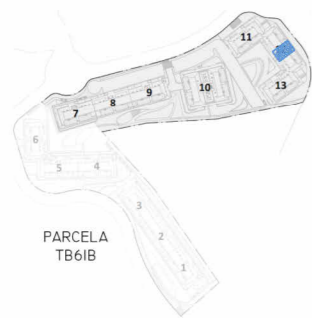
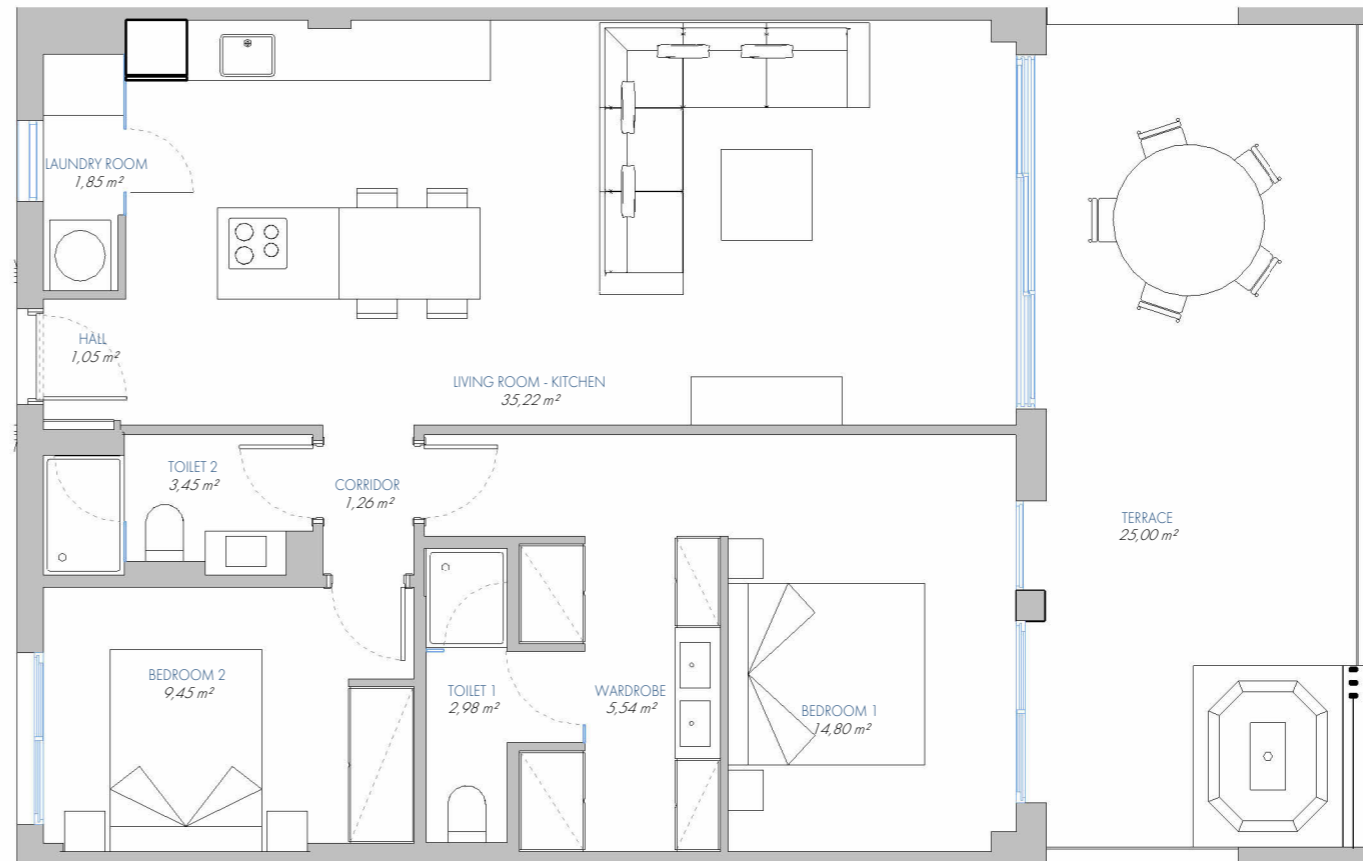
12.P1.C

BUILT AREA

Living Area	86,70 m ²
Terrace Area	27,20 m ²
TOTAL BUILT AREA:	113,90 m²

ACCORDING TO D. 218/2005

Useful Area	83,16 m ²
Built Area	110,20 m ²



1:75

(*) This plan may be modified depending on progress of the development. The furniture shown is purely for decorative purposes. The project manager reserves the right to make the necessary changes for any possible functional, aesthetic and legal reasons, without this negatively affecting the quality of the construction. Illustrative dimensions