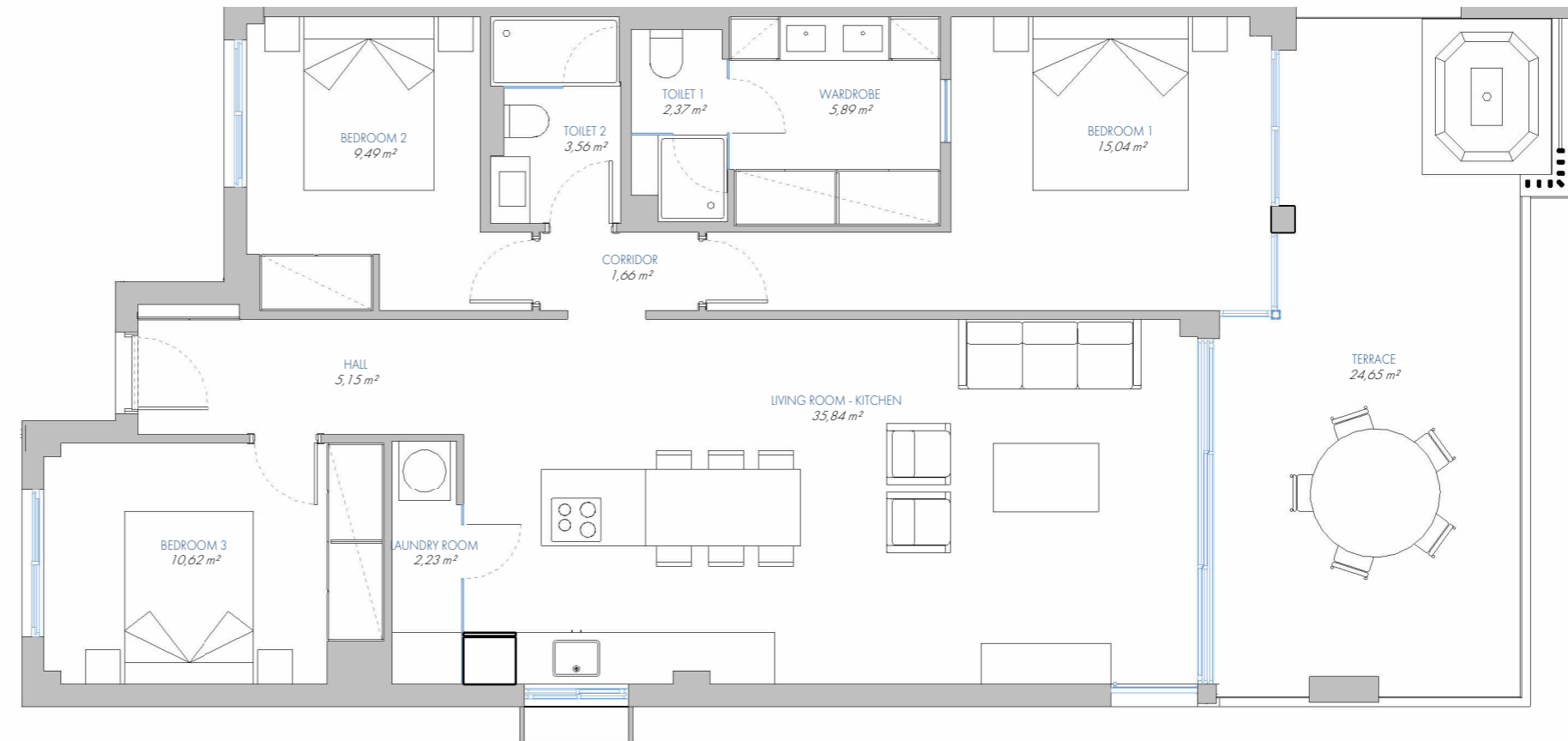


LOMAS UNIQUE

UNIQUE APARTMENT Nº 165

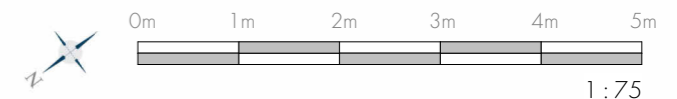
11.P2.A



BUILT AREA	
Living Area	106,04 m ²
Terrace Area	27,18 m ²
TOTAL BUILT AREA:	133,22 m²

ACCORDING TO D. 218/2005

Useful Area	101,04 m ²
Built Area	134,72 m ²



1:75