

LOMAS UNIQUE

UNIQUE SKY SOLARIUM Nº 156

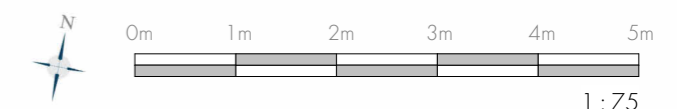
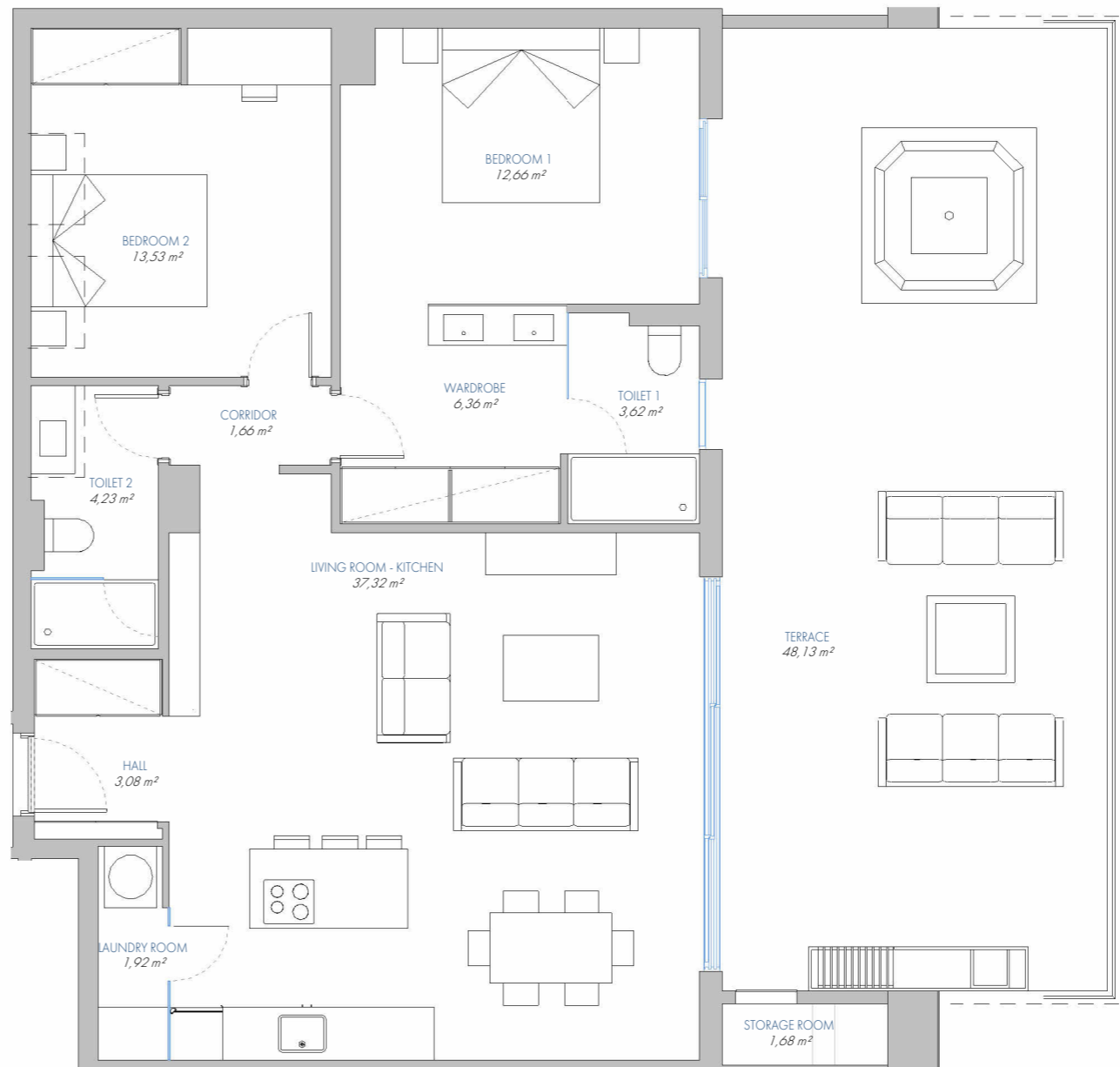
10.PA.B

BUILT AREA

Living Area	95,76 m ²
Terrace Area	52,79 m ²
TOTAL BUILT AREA:	148,55 m²

ACCORDING TO D. 218/2005

Useful Area	94,67 m ²
Built Area	121,97 m ²



(*) This plan may be modified depending on progress of the development. The furniture shown is purely for decorative purposes. The project manager reserves the right to make the necessary changes for any possible functional, aesthetic and legal reasons, without this negatively affecting the quality of the construction. Illustrative dimensions