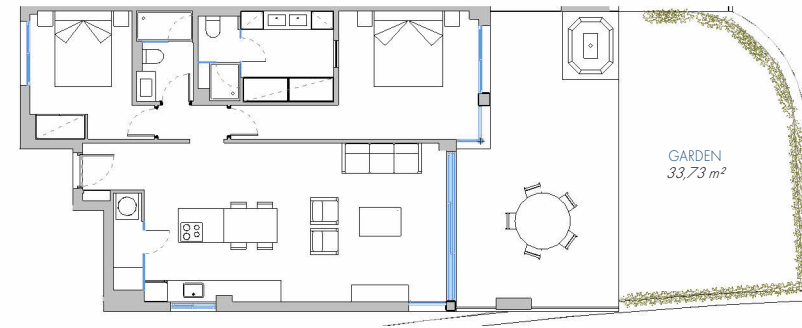


LOMAS UNIQUE

UNIQUE GARDEN VILLA Nº 135

10.PB.E



BUILT AREA	
Living Area	87,96 m ²
Terrace Area	32,04 m ²
Garden	37,54 m ²
TOTAL BUILT AREA:	157,54 m²

ACCORDING TO D. 218/2005

Useful Area	83,41 m ²
Built Area	111,71 m ²

