

# LOMAS UNIQUE

UNIQUE GARDEN VILLA Nº 132

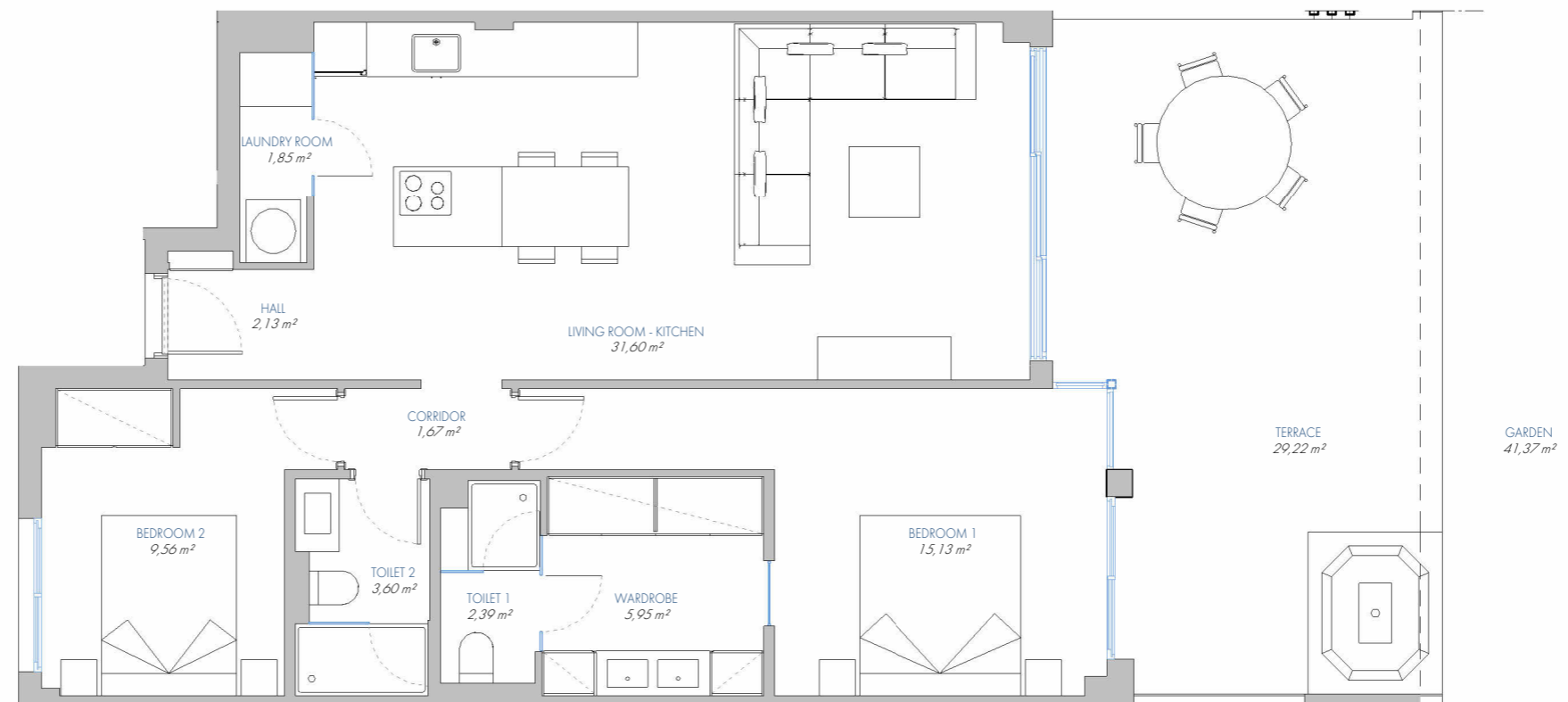
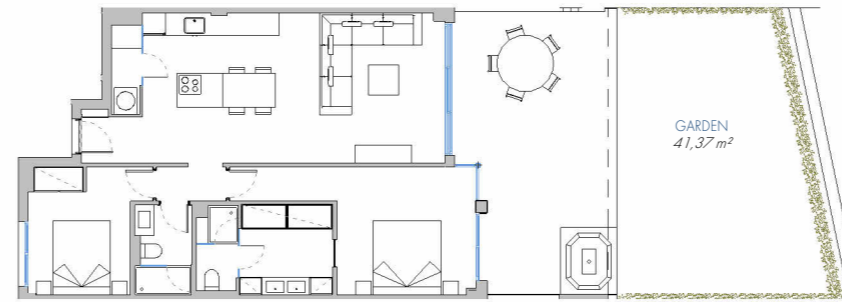
10.PB.B

## BUILT AREA

Living Area	84,58 m <sup>2</sup>
Terrace Area	30,52 m <sup>2</sup>
Garden	43,75 m <sup>2</sup>
<b>TOTAL BUILT AREA:</b>	<b>158,85 m<sup>2</sup></b>

## ACCORDING TO D. 218/2005

Useful Area	81,27 m <sup>2</sup>
Built Area	107,52 m <sup>2</sup>



1:75