

LOMAS UNIQUE

UNIQUE APARTMENT Nº 128

9.P2.D

BUILT AREA

Living Area 85,97 m²

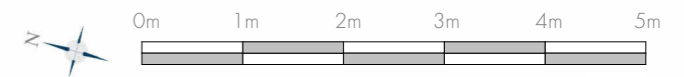
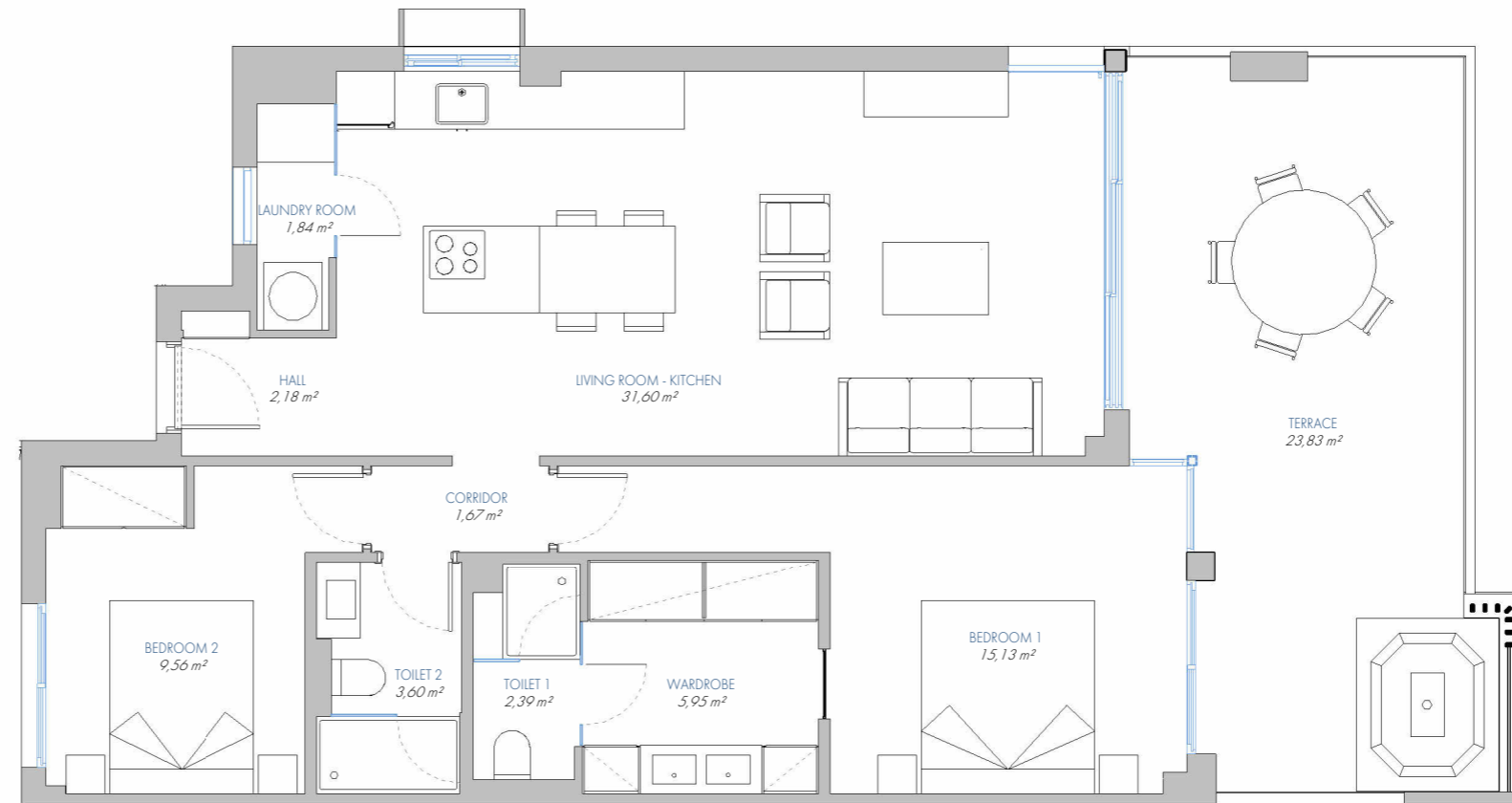
Terrace Area 26,37 m²

TOTAL BUILT AREA: 112,34 m²

ACCORDING TO D. 218/2005

Useful Area 81,31 m²

Built Area 109,17 m²



1:75