

LOMAS UNIQUE

UNIQUE APARTMENT N° 124

9.P1.D

BUILT AREA

Living Area 85,96 m²

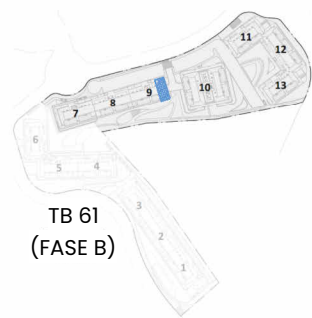
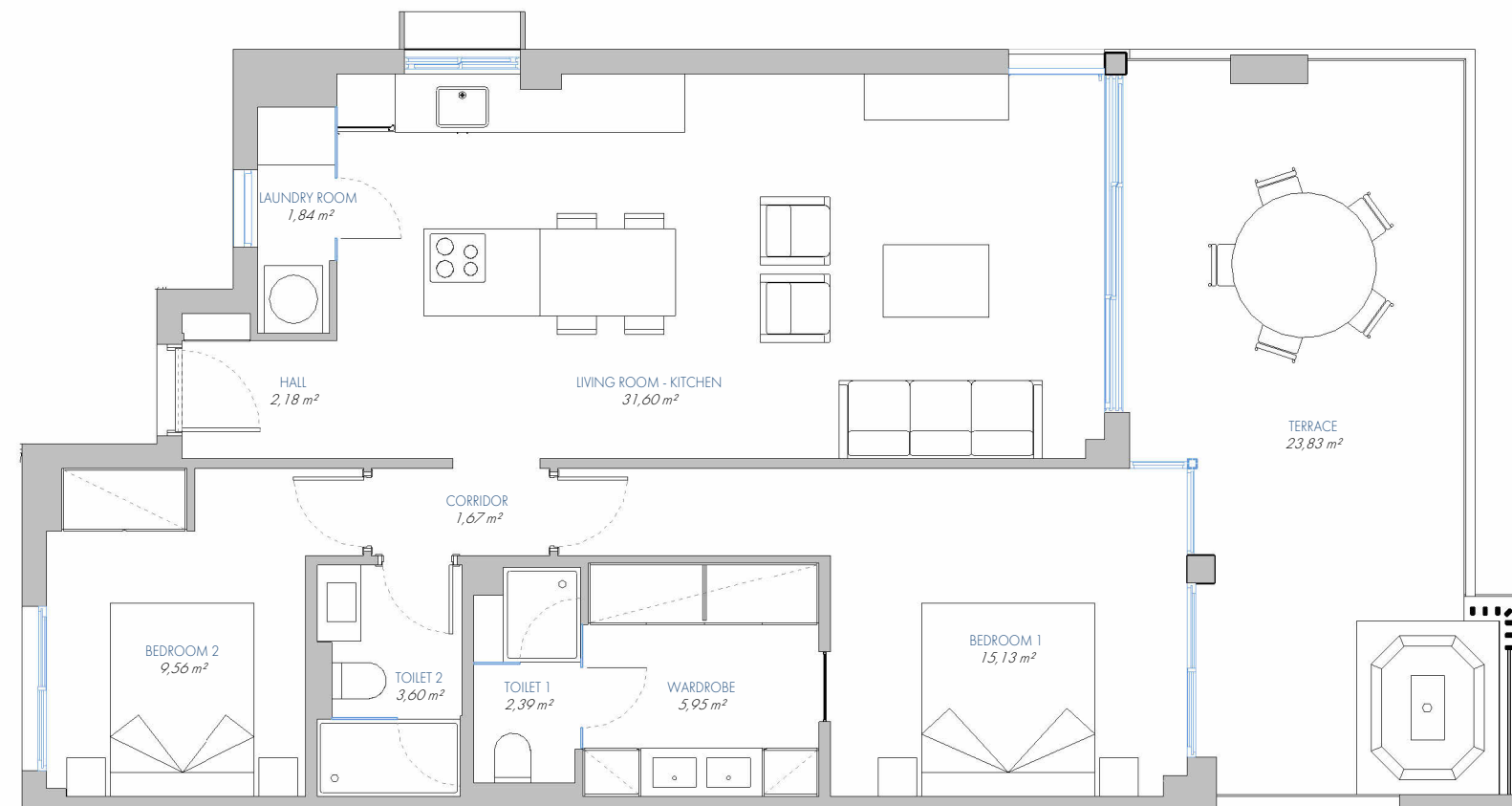
Terrace Area 26,38 m²

TOTAL BUILT AREA: 112,34 m²

ACCORDING TO D. 218/2005

Useful Area 81,31 m²

Built Area 109,13 m²



1:75