

LOMAS UNIQUE

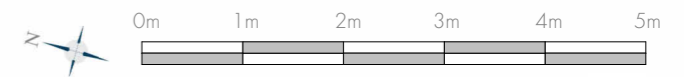
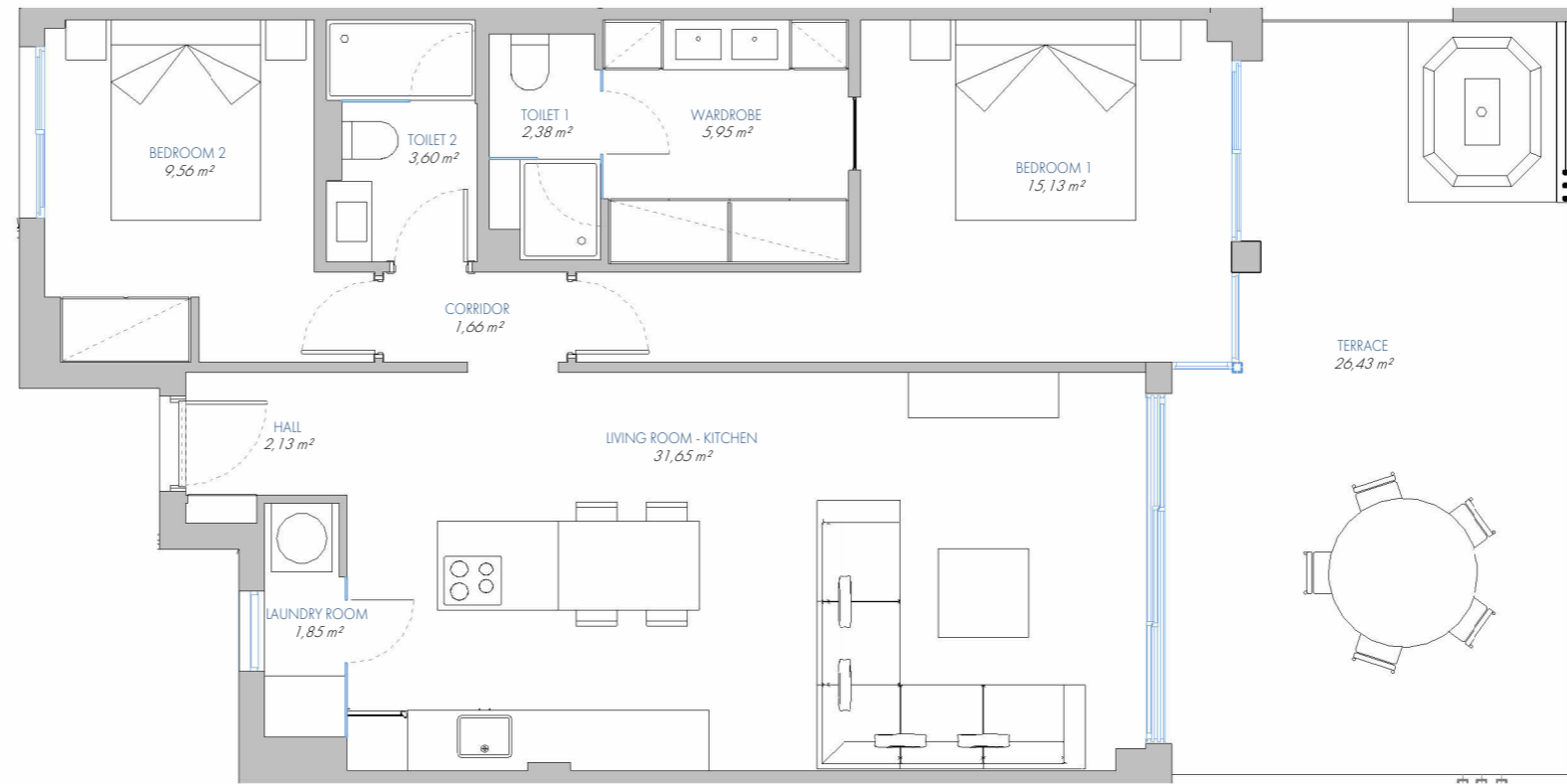
UNIQUE APARTMENT Nº 123

9.P1.C

BUILT AREA	
Living Area	84,77 m ²
Terrace Area	28,71 m ²
TOTAL BUILT AREA:	113,48 m²

ACCORDING TO D. 218/2005

Useful Area	81,30 m ²
Built Area	107,75 m ²



1:75