

LOMAS UNIQUE

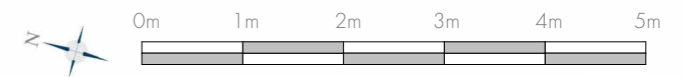
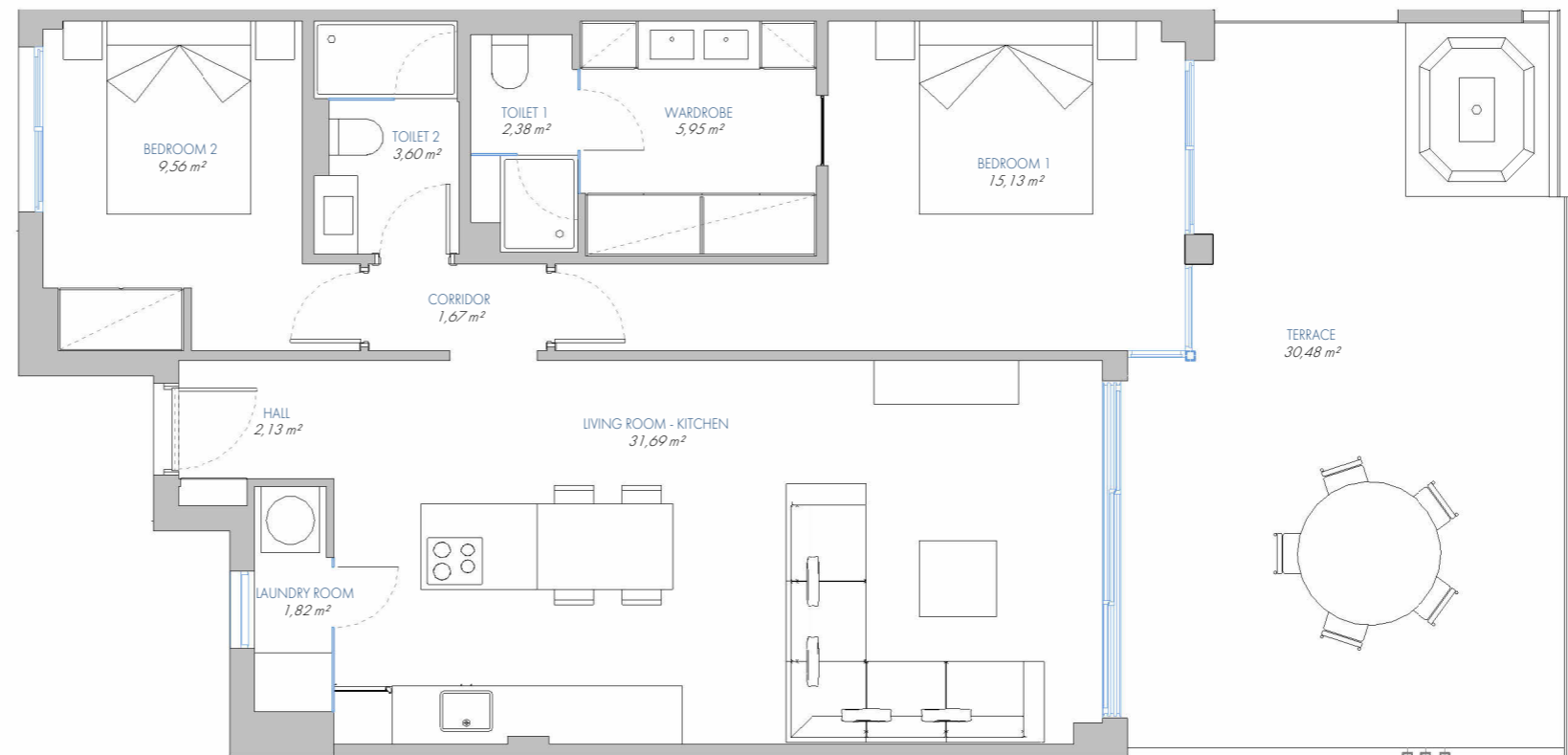
UNIQUE APARTMENT Nº 119

9.PB.C

BUILT AREA	
Living Area	84,76 m ²
Terrace Area	32,97 m ²
TOTAL BUILT AREA:	117,73 m²

ACCORDING TO D. 218/2005

Useful Area	81,32 m ²
Built Area	107,74 m ²



1:75