

LOMAS UNIQUE

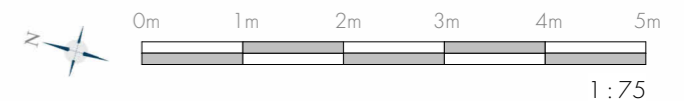
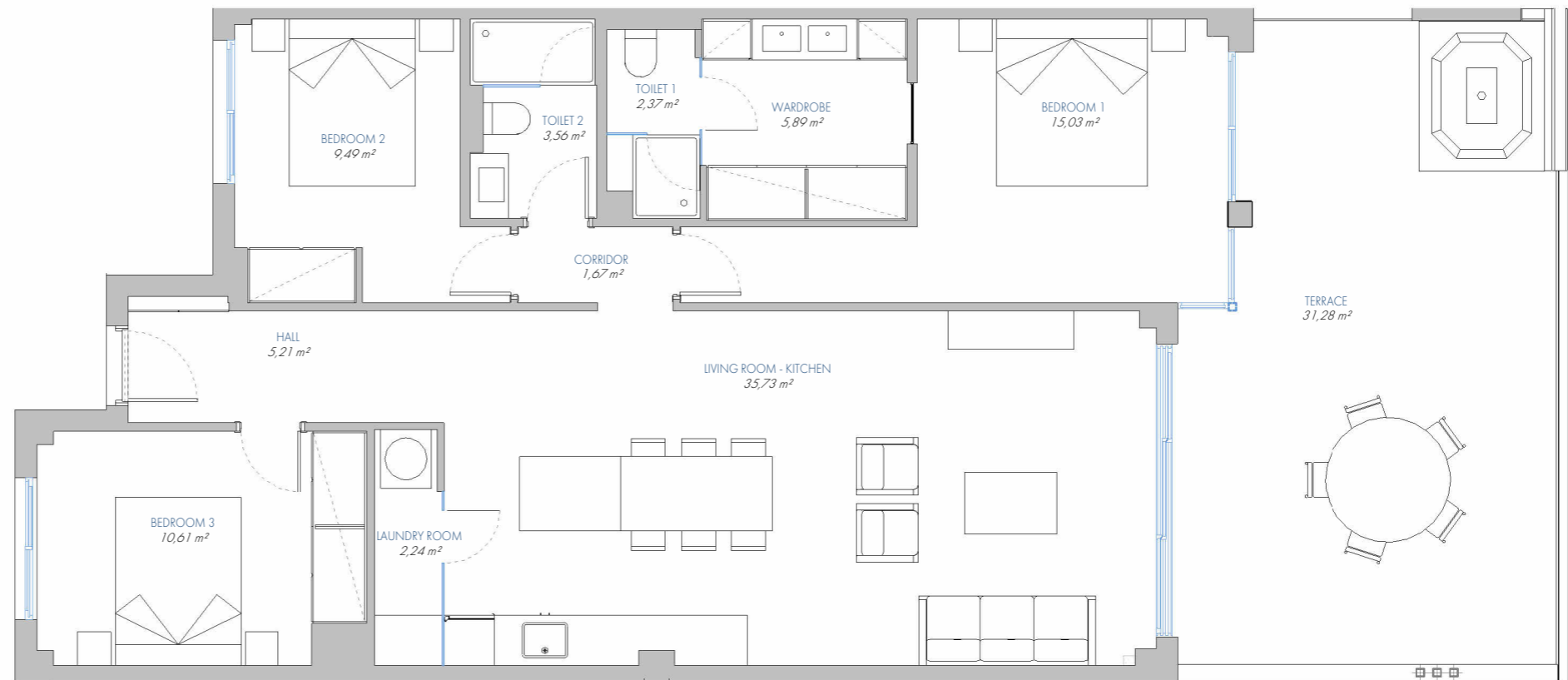
UNIQUE APARTMENT Nº 117

9.PB.A

BUILT AREA	
Living Area	105,00 m ²
Terrace Area	34,29 m ²
TOTAL BUILT AREA:	139,29 m²

ACCORDING TO D. 218/2005

Useful Area	101,01 m ²
Built Area	133,49 m ²



1:75