

# LOMAS UNIQUE

UNIQUE SKY SOLARIUM Nº 114

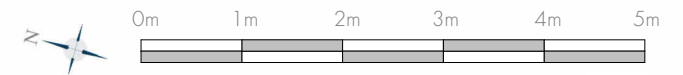
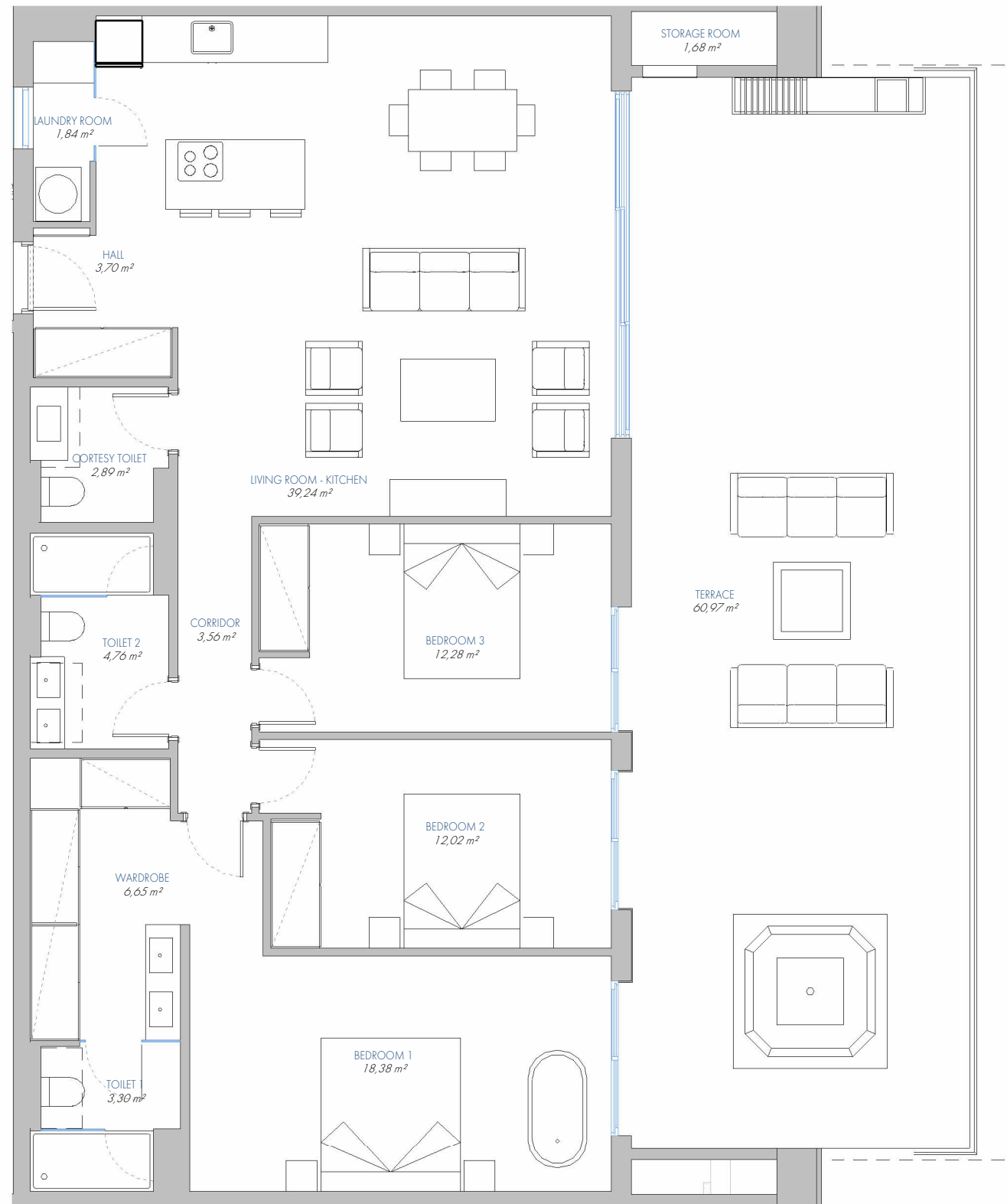
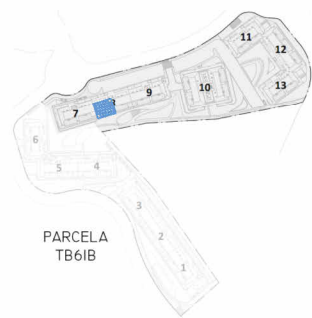
8.PA.A

**BUILT AREA**

Living Area	124,65 m <sup>2</sup>
Terrace Area	68,22 m <sup>2</sup>
<b>TOTAL BUILT AREA:</b>	<b>192,87 m<sup>2</sup></b>

**ACCORDING TO D. 218/2005**

Useful Area	121,33 m <sup>2</sup>
Built Area	158,60 m <sup>2</sup>



1:75

(\* ) This plan may be modified depending on progress of the development. The furniture shown is purely for decorative purposes. The project manager reserves the right to make the necessary changes for any possible functional, aesthetic and legal reasons, without this negatively affecting the quality of the construction. Illustrative dimensions