

# LOMAS UNIQUE

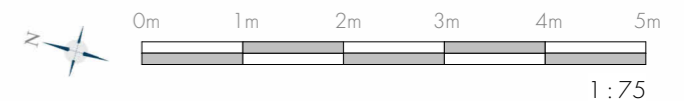
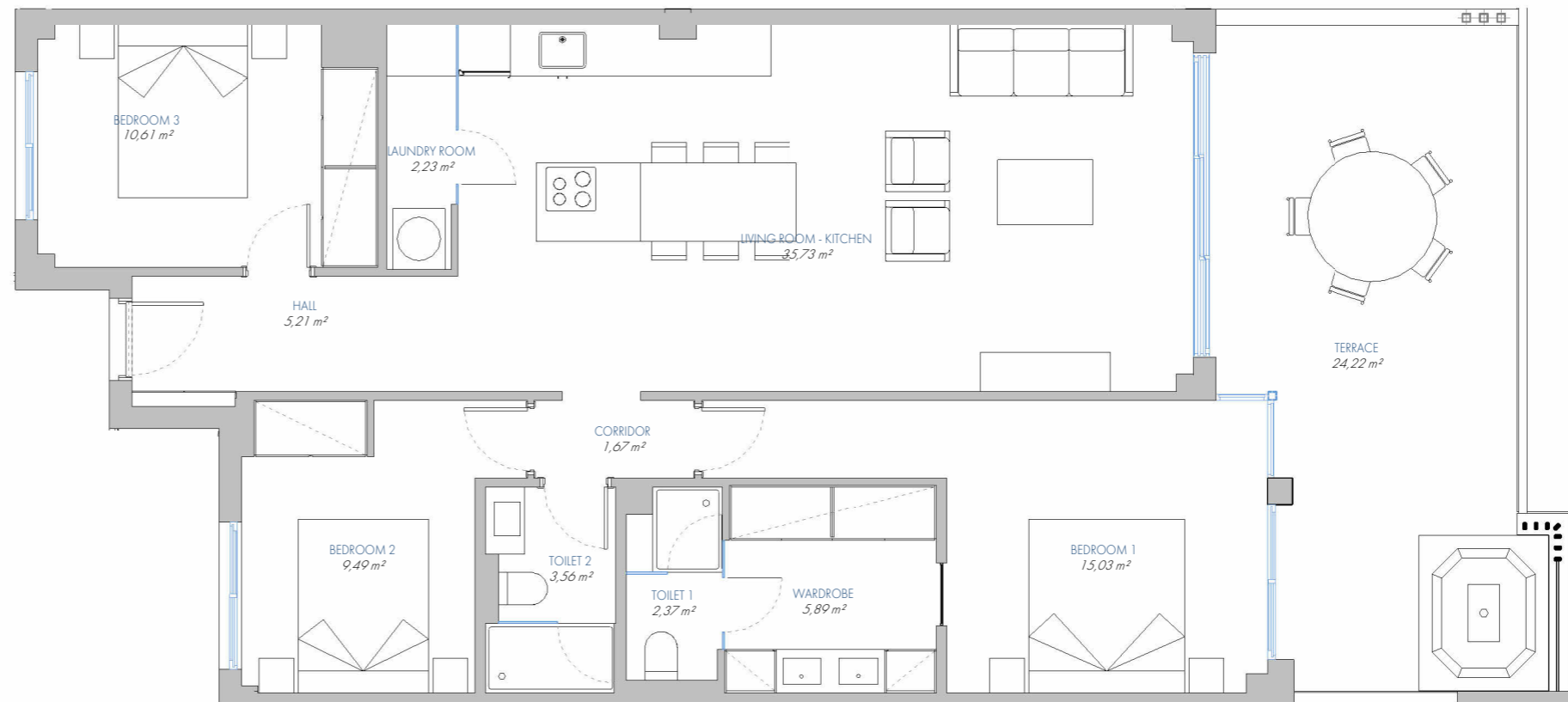
UNIQUE APARTMENT Nº 113

8.P2.D

BUILT AREA	
Living Area	105,00 m <sup>2</sup>
Terrace Area	26,96 m <sup>2</sup>
<b>TOTAL BUILT AREA:</b>	<b>131,96 m<sup>2</sup></b>

ACCORDING TO D. 218/2005

Useful Area	100,75 m <sup>2</sup>
Built Area	133,46 m <sup>2</sup>



1:75