

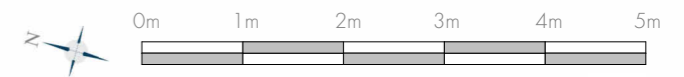
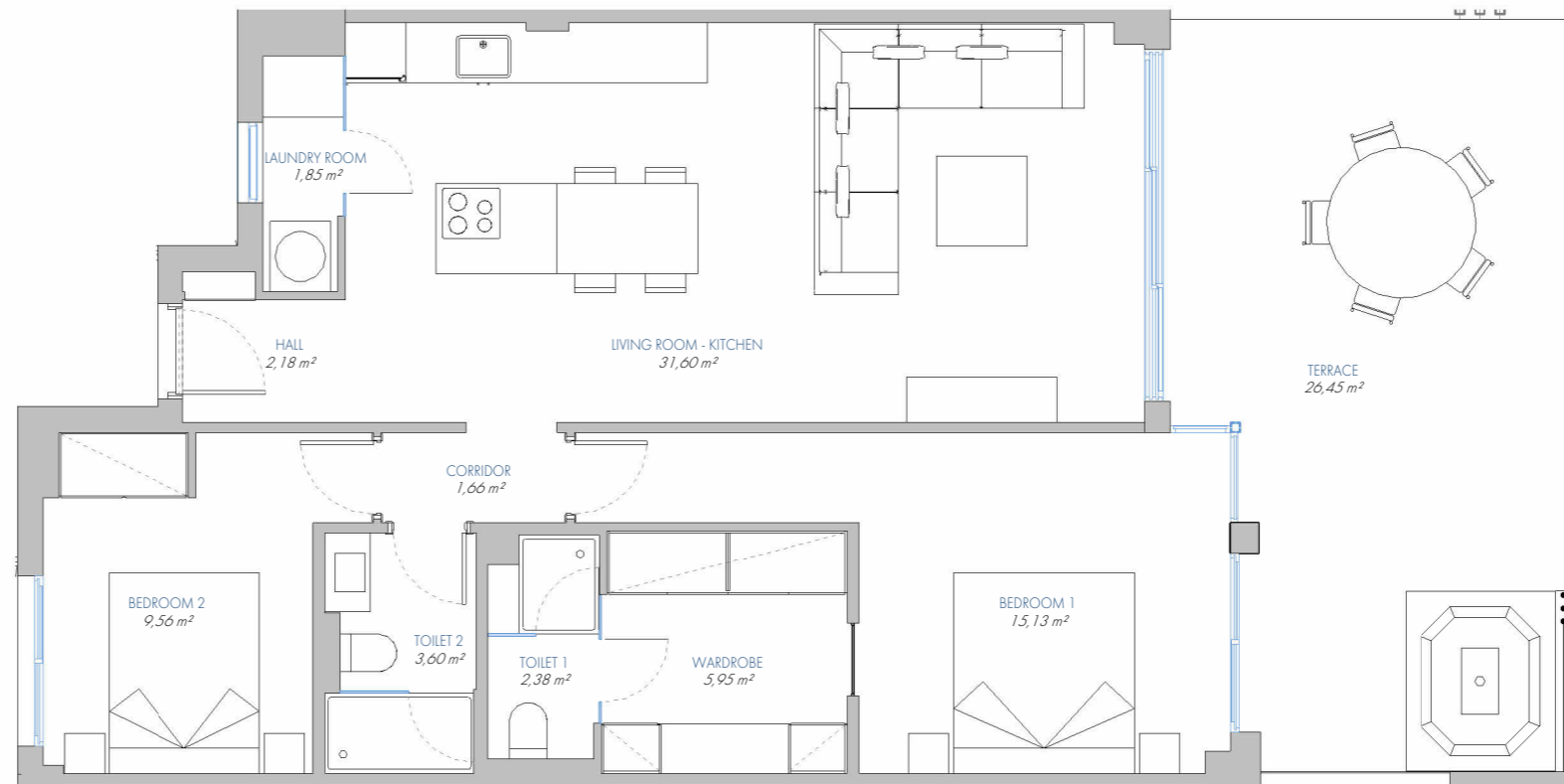
LOMAS UNIQUE

UNIQUE APARTMENT Nº 111

8.P2.B

BUILT AREA	
Living Area	84,77 m ²
Terrace Area	28,72 m ²
TOTAL BUILT AREA:	113,49 m²

ACCORDING TO D. 218/2005	
Useful Area	81,30 m ²
Built Area	107,75 m ²



1:75