

LOMAS UNIQUE

UNIQUE APARTMENT Nº 106

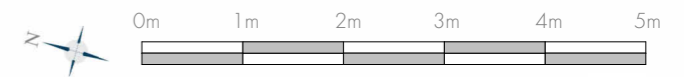
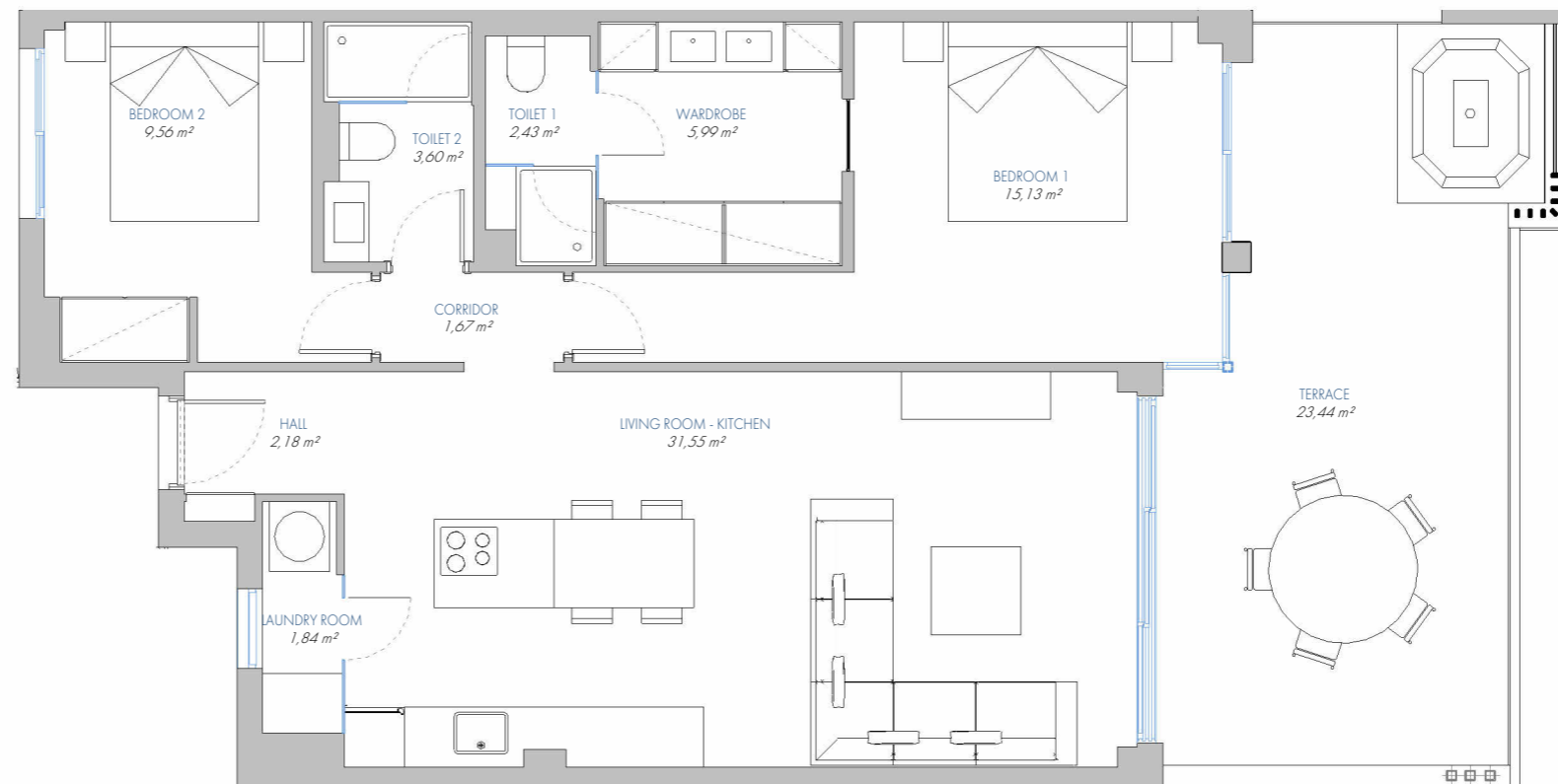
8.P1.A

BUILT AREA

Living Area	85,27 m ²
Terrace Area	26,13 m ²
TOTAL BUILT AREA:	111,40 m²

ACCORDING TO D. 218/2005

Useful Area	81,35 m ²
Built Area	108,34m ²



1:75