

LOMAS UNIQUE

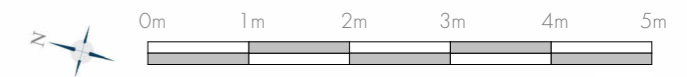
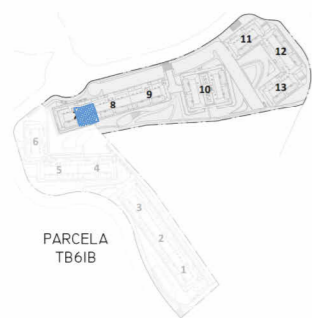
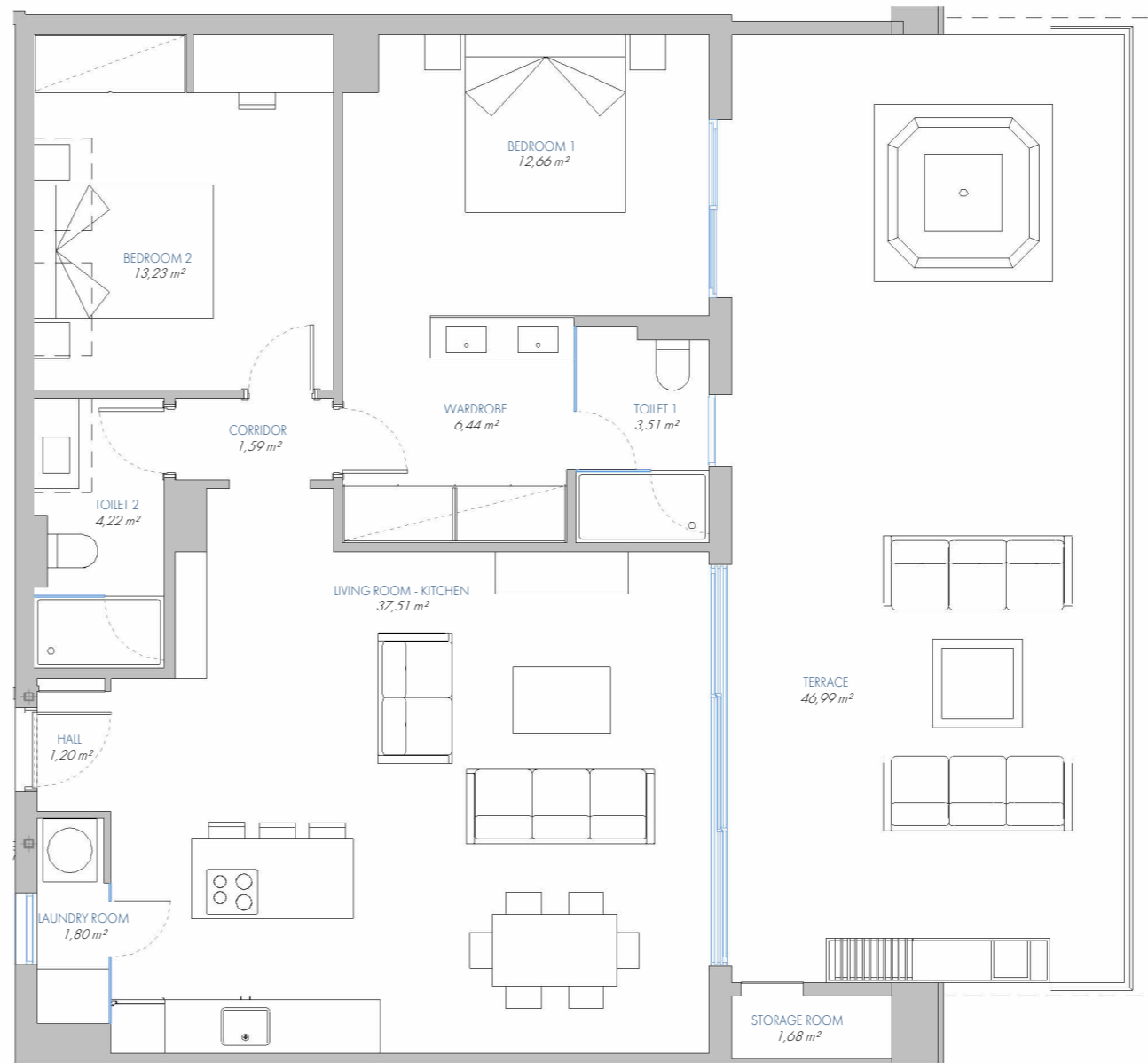
UNIQUE SKY SOLARIUM Nº 101

7.PA.B

BUILT AREA	
Living Area	94,10 m ²
Terrace Area	51,17 m ²
TOTAL BUILT AREA:	145,27 m²

ACCORDING TO D. 218/2005

Useful Area	92,22 m ²
Built Area	119,78 m ²



1:75