

LOMAS UNIQUE

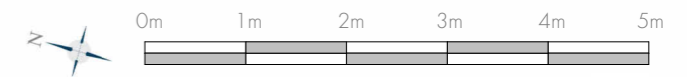
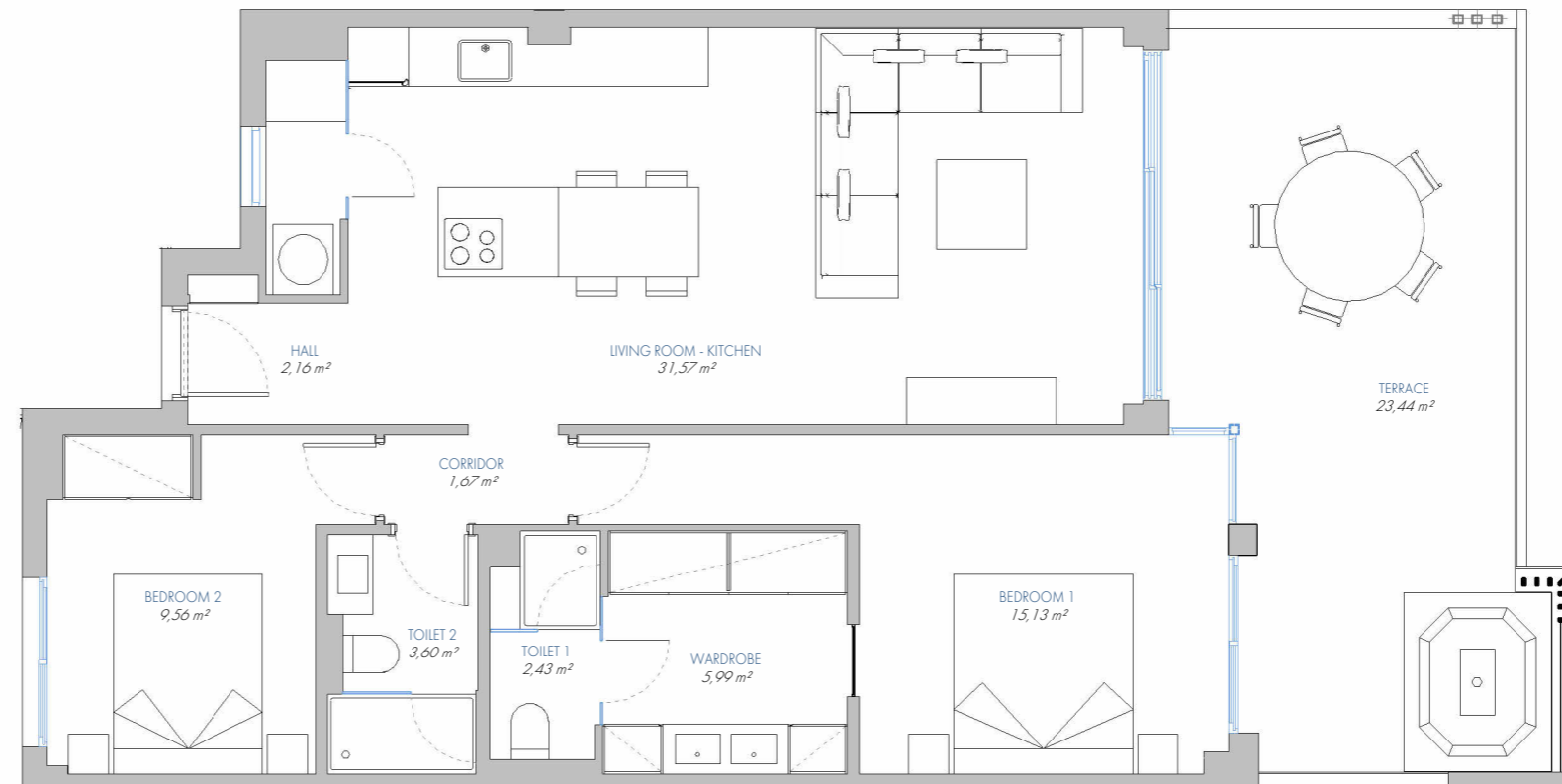
UNIQUE APARTMENT Nº 99

7.P2.D

BUILT AREA	
Living Area	85,24 m ²
Terrace Area	26,16 m ²
TOTAL BUILT AREA:	111,40 m²

ACCORDING TO D. 218/2005

Useful Area	81,35 m ²
Built Area	108,31 m ²



1:75