

LOMAS UNIQUE

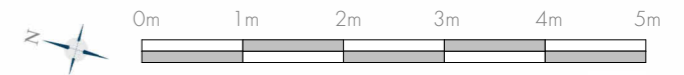
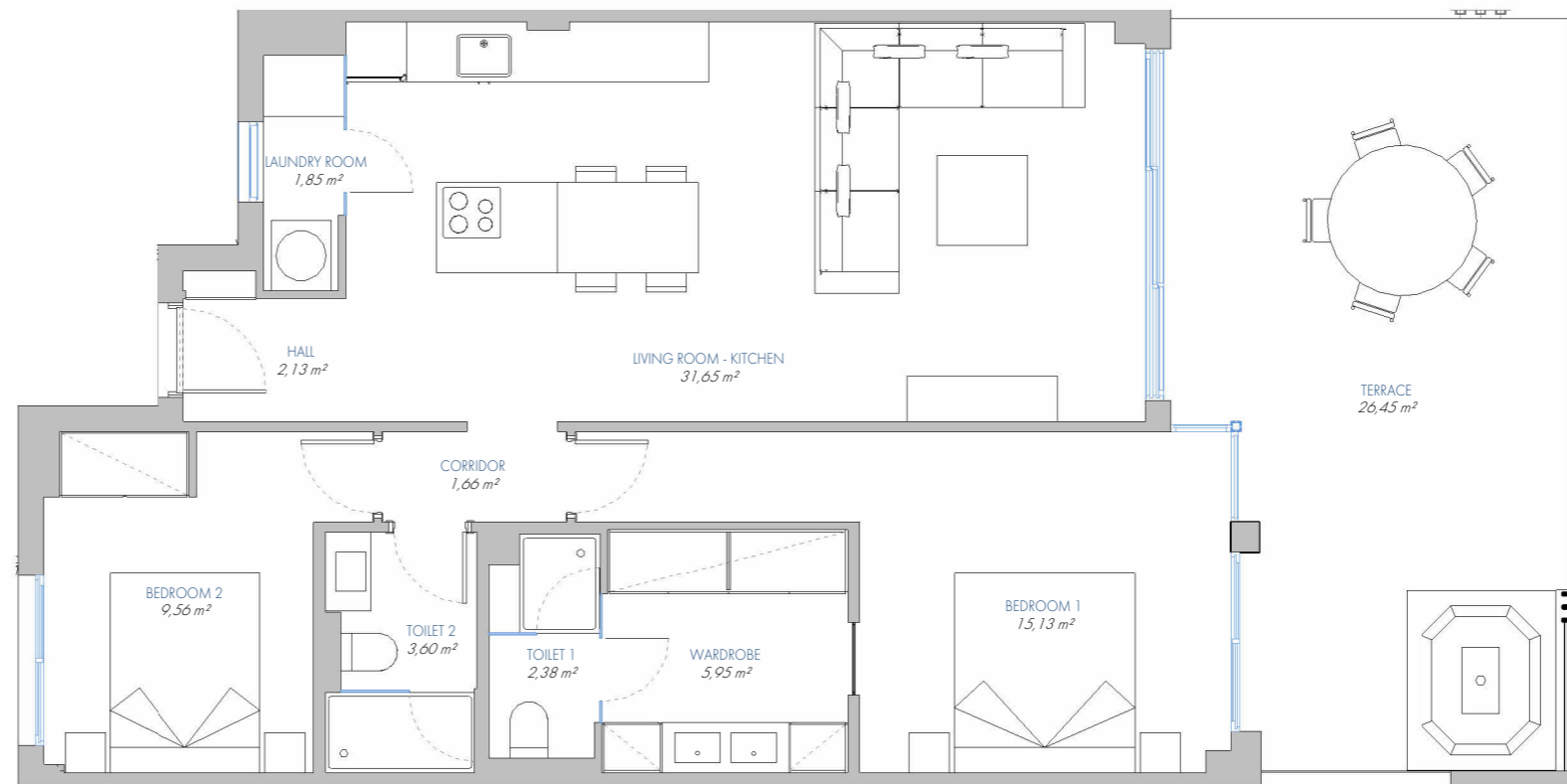
UNIQUE APARTMENT Nº 97

7.P2.B

BUILT AREA	
Living Area	84,74 m ²
Terrace Area	28,74 m ²
TOTAL BUILT AREA:	113,48 m²

ACCORDING TO D. 218/2005

Useful Area	81,30 m ²
Built Area	107,71 m ²



1:75