

LOMAS UNIQUE

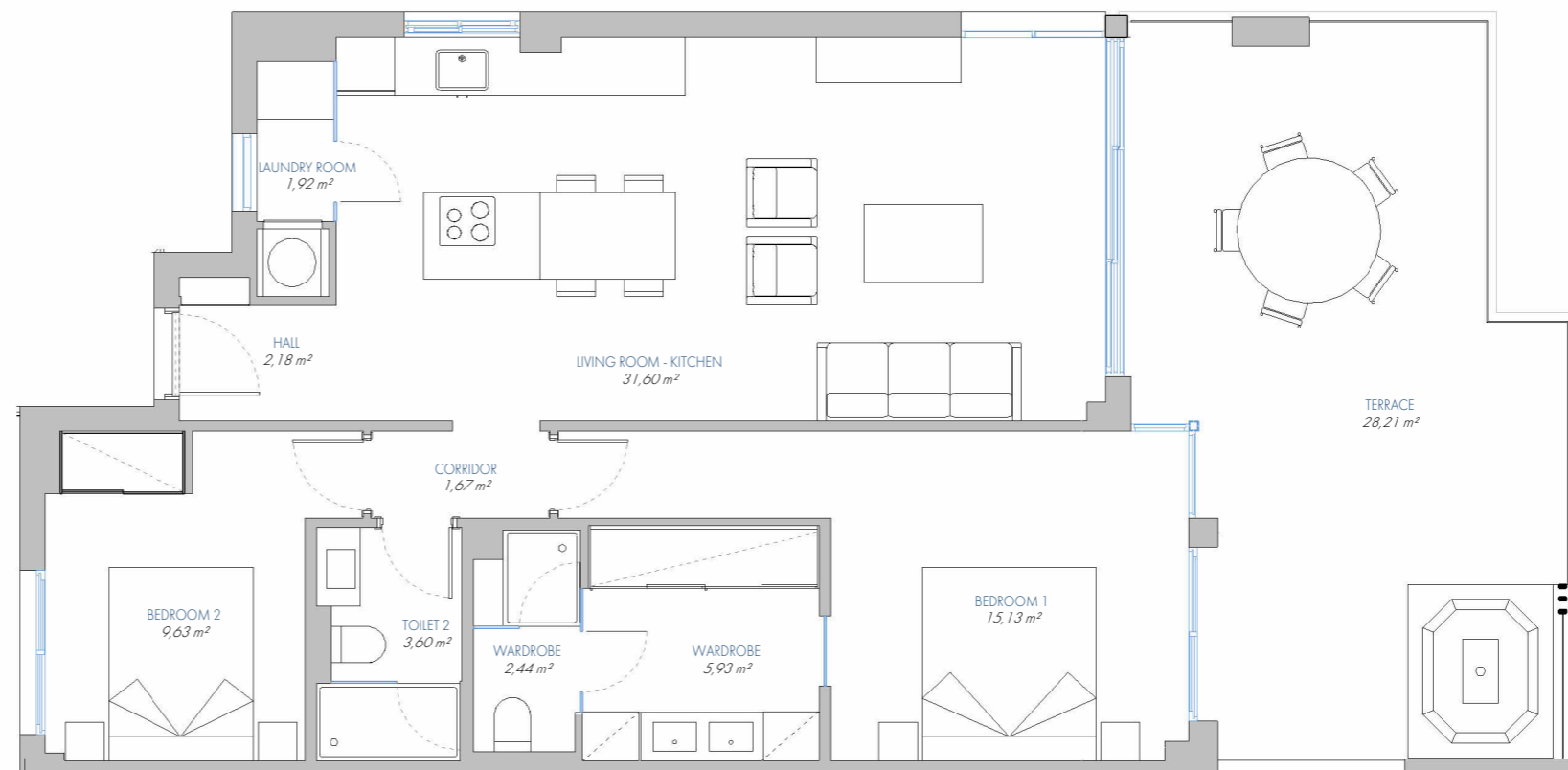
UNIQUE APARTMENT Nº 85

6.2.D

BUILT AREA	
Living Area	85,96 m ²
Terrace Area	30,90 m ²
TOTAL BUILT AREA:	116,86 m²

ACCORDING TO D. 218/2005

Useful Area	81,51 m ²
Built Area	113,22 m ²



1:75