

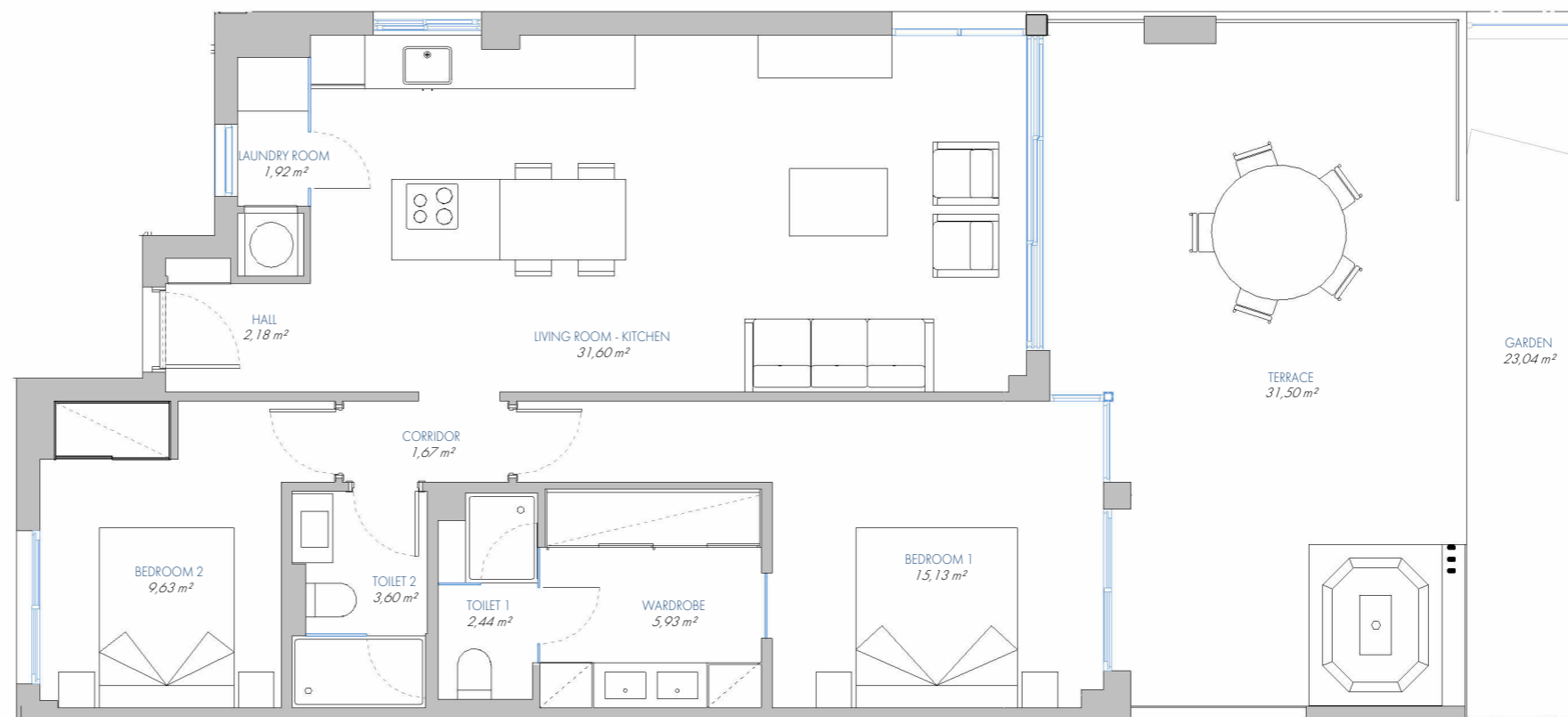
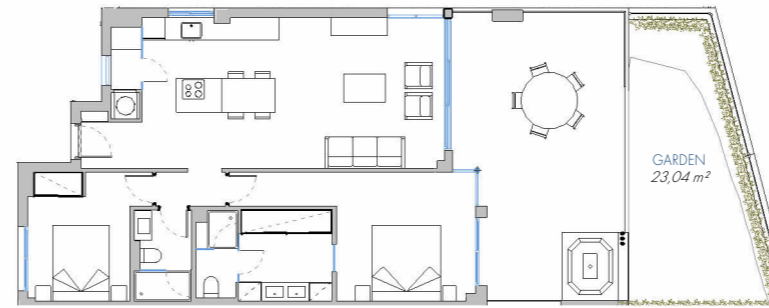
# LOMAS UNIQUE

## UNIQUE GARDEN VILLA Nº 77

6.PB.D

BUILT AREA	
Living Area	85,96 m <sup>2</sup>
Terrace Area	33,55 m <sup>2</sup>
<b>TOTAL BUILT AREA:</b>	<b>145,64 m<sup>2</sup></b>

ACCORDING TO D. 218/2005	
Useful Area	81,51 m <sup>2</sup>
Built Area	113,22 m <sup>2</sup>



TB 61  
(FASE A)



1:75