





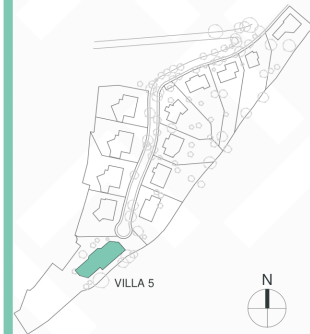
This document is for information only. The areas and measurements are approximate and may be modified for technical reasons and/or administrative issues. The room areas marked on the drawing are usable space.

Villa 5

Built closed area	486,17 m ²
Covered terrace	89,80 m ²
Open terrace	213,79 m ²
Total terrace	303,59 m ²
Pool	54,72 m ²

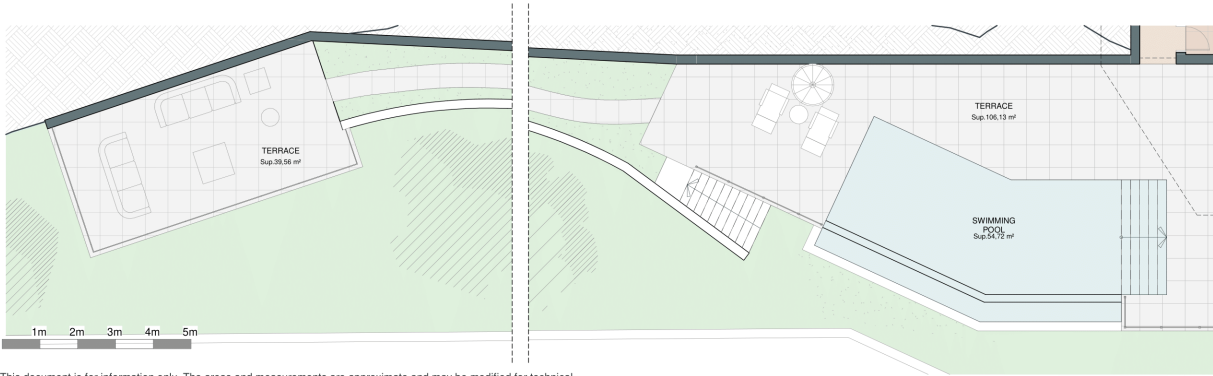
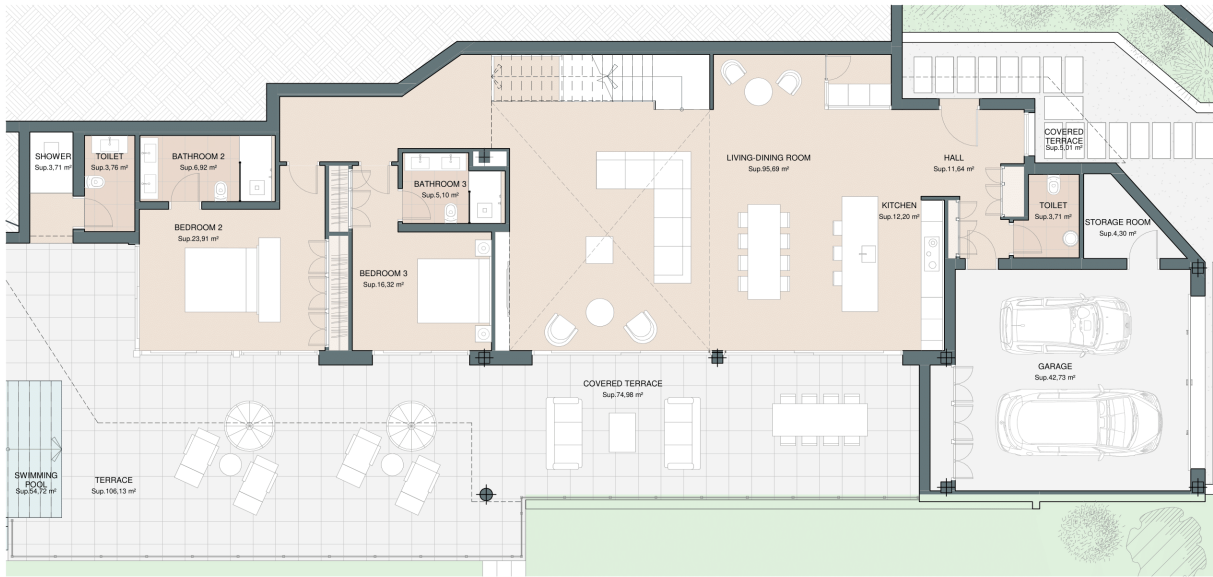
Total built area 844,48 m²

 5
  5
  486,17 m²
 3



Pinares de San Antón

Villa 5 Ground Floor







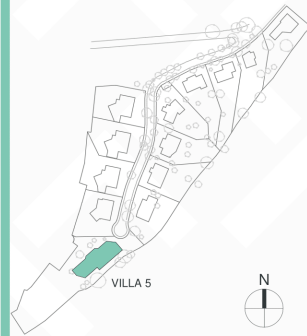
This document is for information only. The areas and measurements are approximate and may be modified for technical reasons and/or administrative issues. The room areas marked on the drawing are usable space.

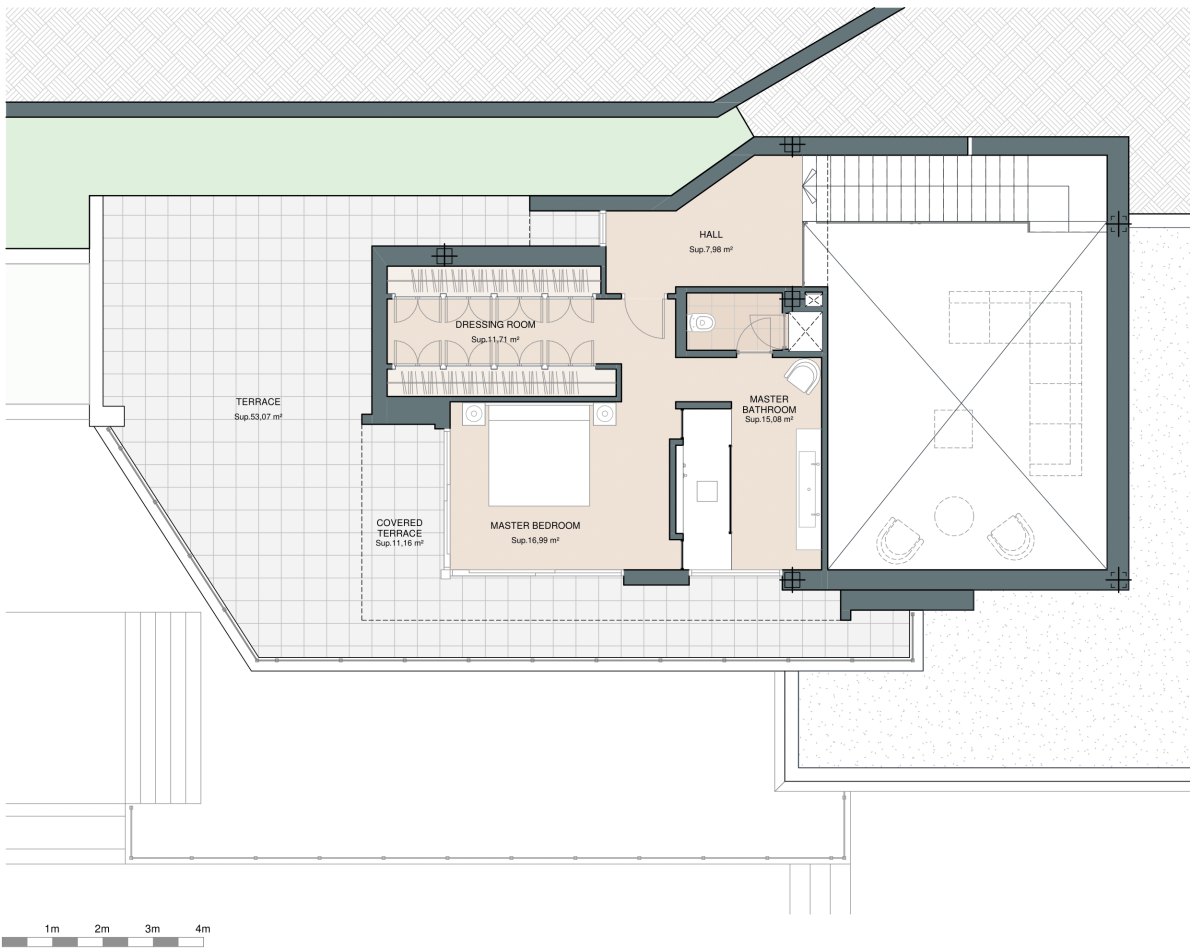
Villa 5

Built closed area	486,17 m ²
Covered terrace	89,80 m ²
Open terrace	213,79 m ²
Total terrace	303,59 m ²
Pool	54,72 m ²

Total built area 844,48 m²





This document is for information only. The areas and measurements are approximate and may be modified for technical reasons and/or administrative issues. The room areas marked on the drawing are usable space.

Villa 5

Built closed area	486,17 m ²
Covered terrace	89,80 m ²
Open terrace	213,79 m ²
Total terrace	303,59 m ²
Pool	54,72 m ²

Total built area 844,48 m²

