





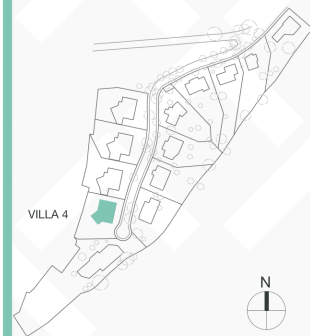
This document is for information only. The areas and measurements are approximate and may be modified for technical reasons and/or administrative issues. The room areas marked on the drawing are usable space.

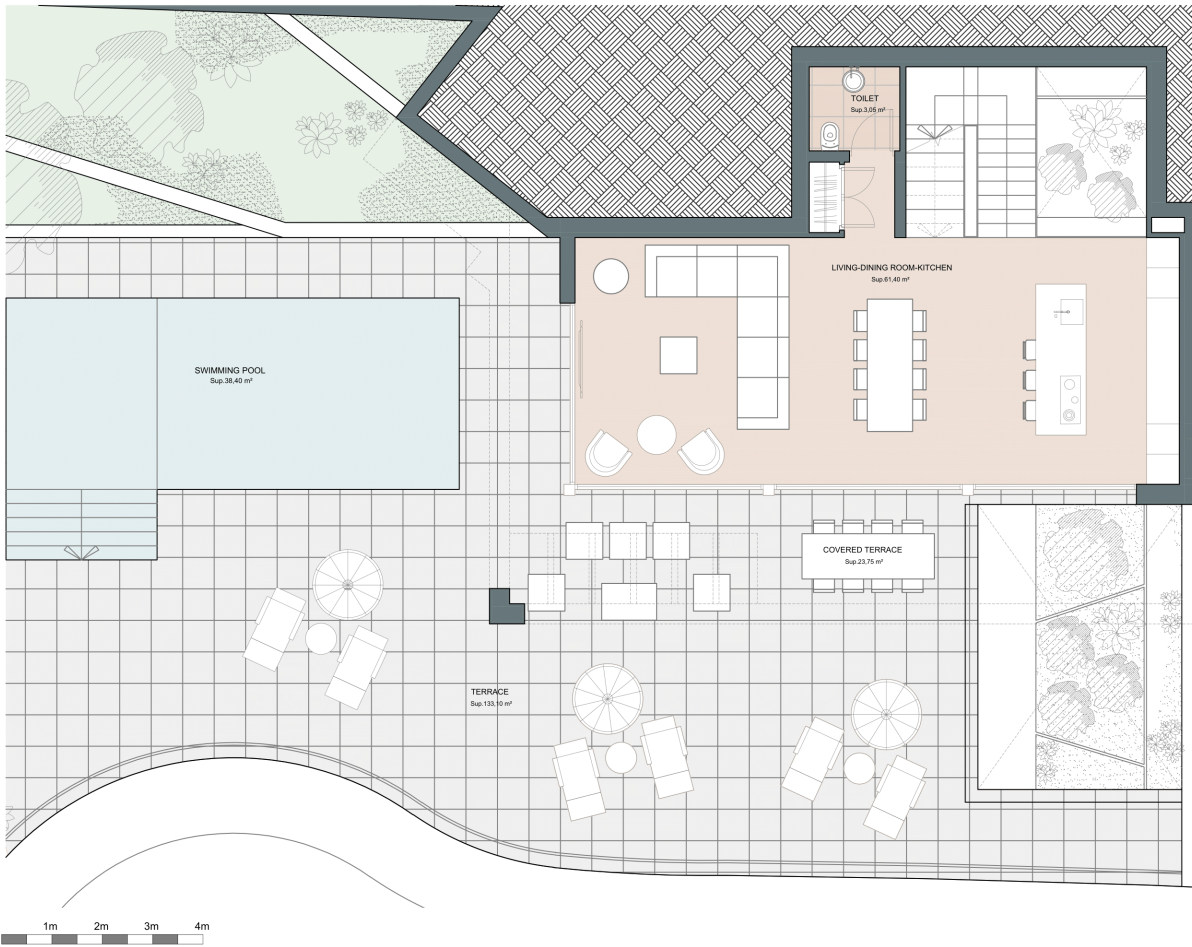
Villa 4

| | |
|-------------------|-----------------------|
| Built closed area | 318,55 m ² |
| Covered terrace | 42,60 m ² |
| Open terrace | 166,00 m ² |
| Total terrace | 208,60 m ² |
| Pool | 38,40 m ² |

Total built area 565,55 m²

 4
  3
  318,55 m²
  3







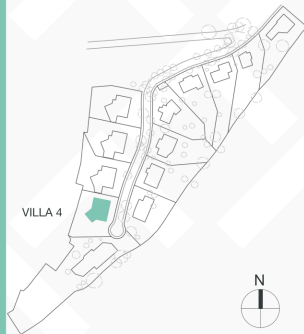


Villa 4

| | |
|-------------------|-----------------------|
| Built closed area | 318,55 m ² |
| Covered terrace | 42,60 m ² |
| Open terrace | 166,00 m ² |
| Total terrace | 208,60 m ² |
| Pool | 38,40 m ² |

Total built area 565,55 m²

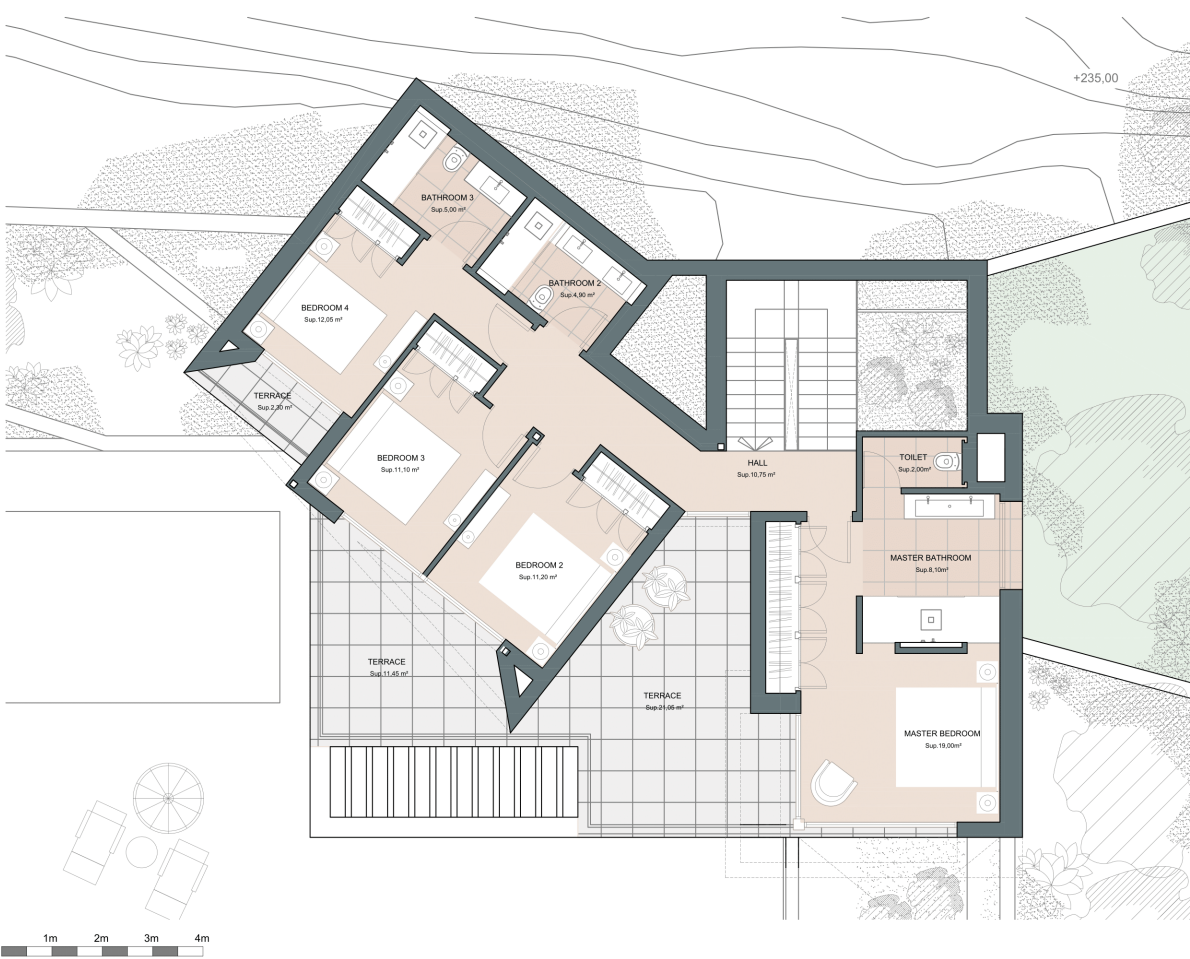
 4
  3
  318,55 m²
  3



This document is for information only. The areas and measurements are approximate and may be modified for technical reasons and/or administrative issues. The room areas marked on the drawing are usable space.

Pinares de San Antón

Villa 4 Level +1







This document is for information only. The areas and measurements are approximate and may be modified for technical reasons and/or administrative issues. The room areas marked on the drawing are usable space.

Villa 4

| | |
|-------------------|-----------------------|
| Built closed area | 318,55 m ² |
| Covered terrace | 42,60 m ² |
| Open terrace | 166,00 m ² |
| Total terrace | 208,60 m ² |
| Pool | 38,40 m ² |

Total built area 565,55 m²

 4
  3
  318,55 m²
 3

