





This document is for information only. The areas and measurements are approximate and may be modified for technical reasons and/or administrative issues. The room areas marked on the drawing are usable space.

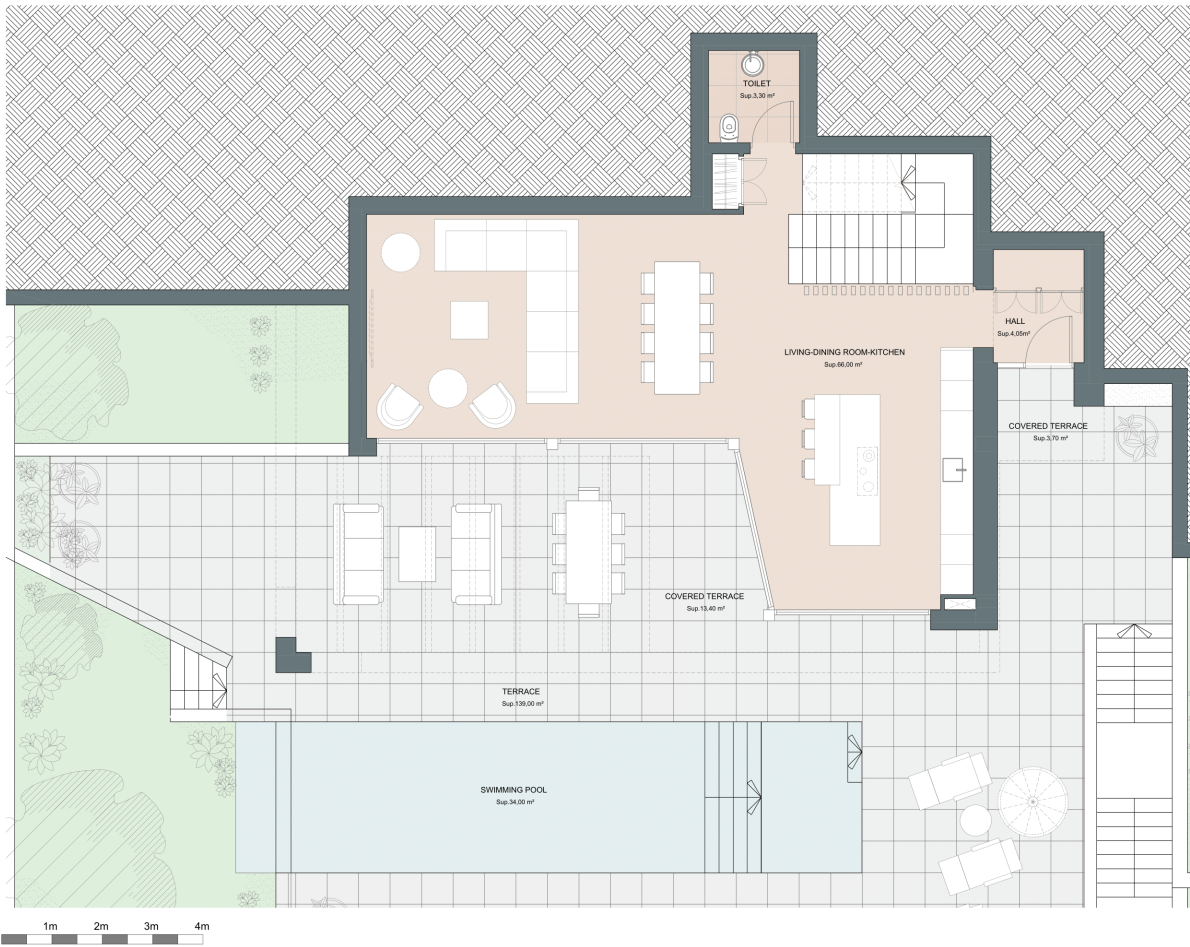
Villa 3

Built closed area	348,30 m ²
Covered terrace	33,45 m ²
Open terrace	195,50 m ²
Total terrace	228,95 m ²
Pool	34,00 m ²

Total built area 611,25 m²

 4
  3
  348,30 m²
  3









This document is for information only. The areas and measurements are approximate and may be modified for technical reasons and/or administrative issues. The room areas marked on the drawing are usable space.

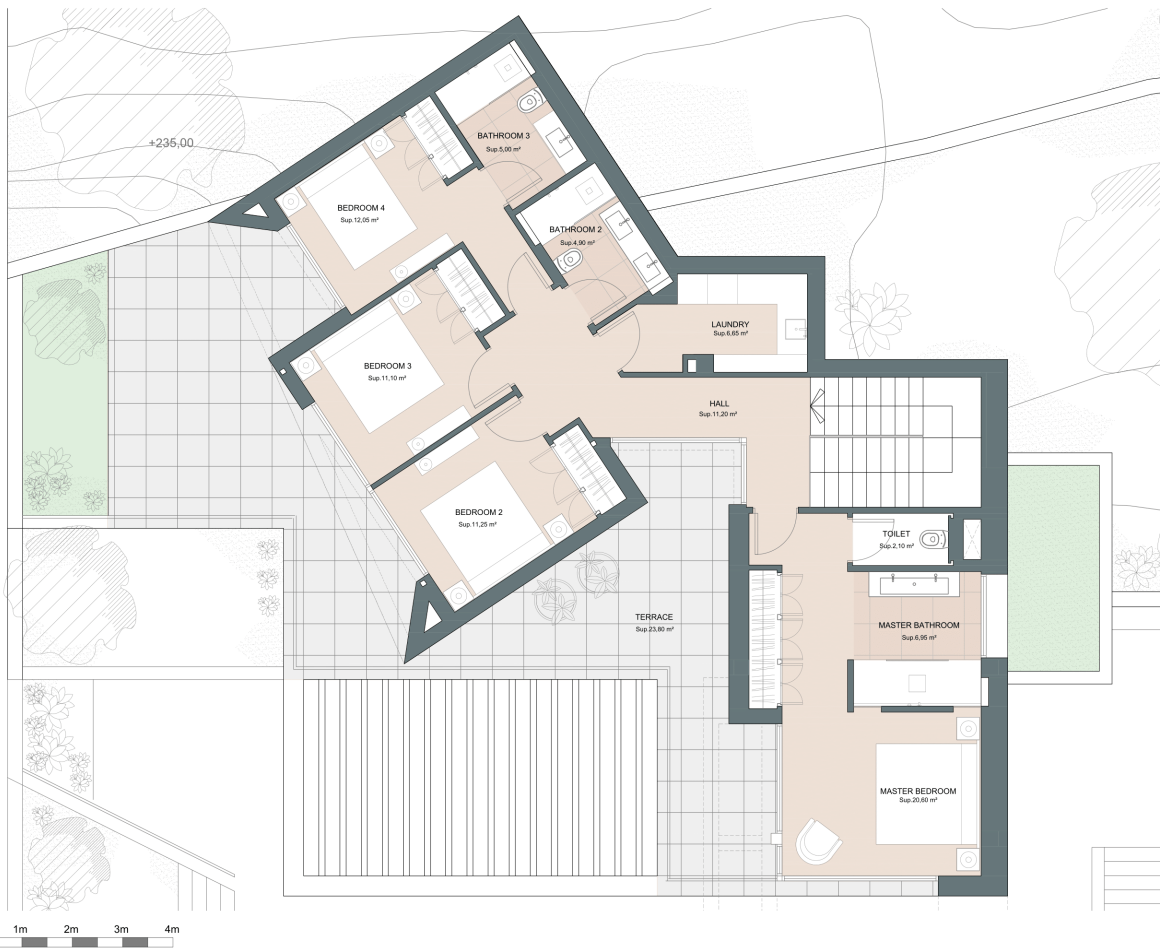
Villa 3

Built closed area	348,30 m ²
Covered terrace	33,45 m ²
Open terrace	195,50 m ²
Total terrace	228,95 m ²
Pool	34,00 m ²

Total built area 611,25 m²

 4
  3
  348,30 m²
 3









This document is for information only. The areas and measurements are approximate and may be modified for technical reasons and/or administrative issues. The room areas marked on the drawing are usable space.

Villa 3

Built closed area	348,30 m ²
Covered terrace	33,45 m ²
Open terrace	195,50 m ²
Total terrace	228,95 m ²
Pool	34,00 m ²

Total built area 611,25 m²

 4
  3
  348,30 m²
 3

