





This document is for information only. The areas and measurements are approximate and may be modified for technical reasons and/or administrative issues. The room areas marked on the drawing are usable space.

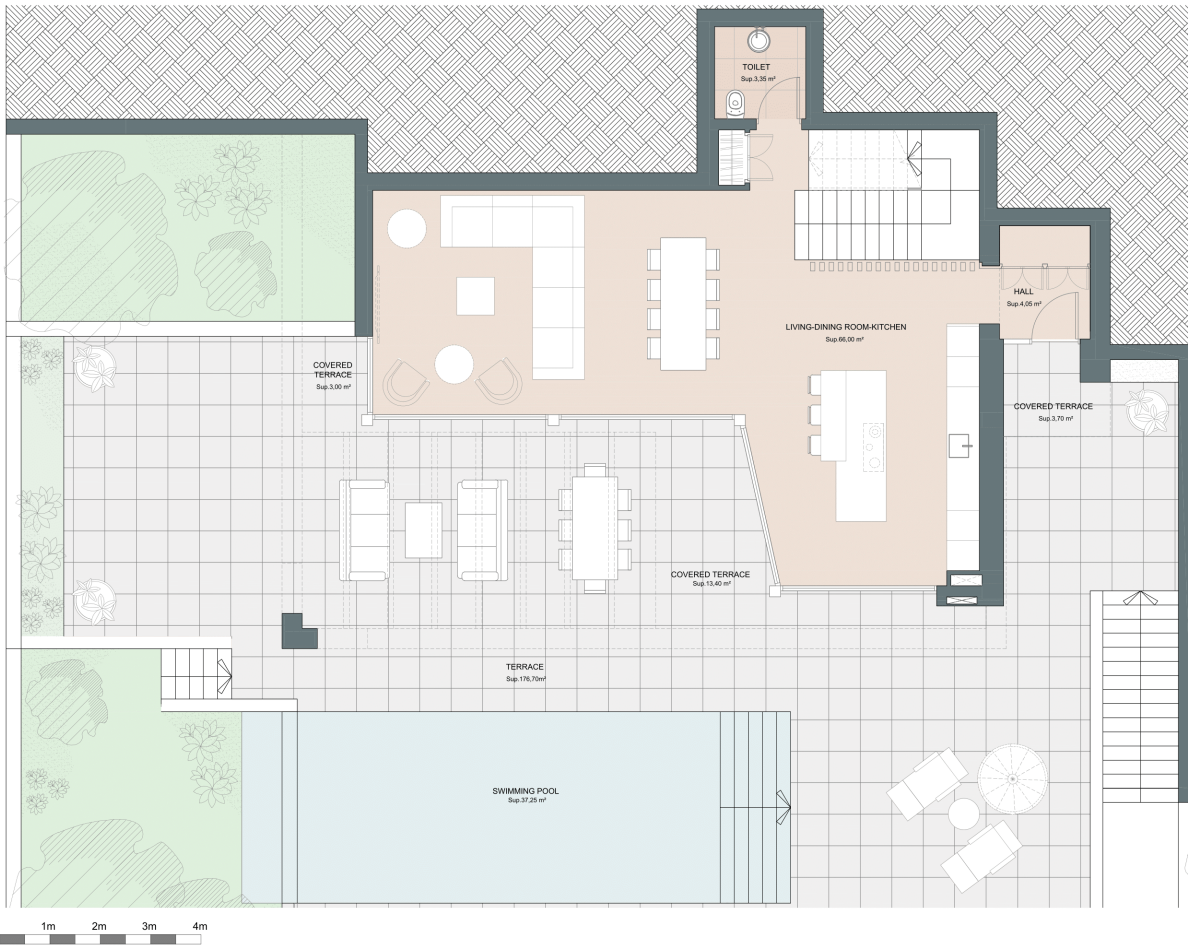
### Villa 2

Built closed area	341,90 m <sup>2</sup>
Covered terrace	41,05 m <sup>2</sup>
Open terrace	209,45 m <sup>2</sup>
Total terrace	250,50 m <sup>2</sup>
Pool	37,25 m <sup>2</sup>

**Total built area 629,65 m<sup>2</sup>**

 4   
  3   
  341,90 m<sup>2</sup>   
  3









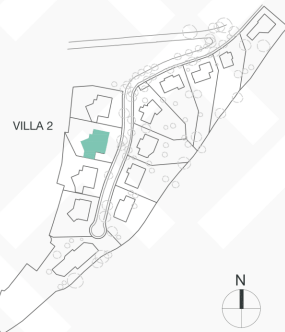
Villa 2

Built closed area	341,90 m <sup>2</sup>
Covered terrace	41,05 m <sup>2</sup>
Open terrace	209,45 m <sup>2</sup>
Total terrace	250,50 m <sup>2</sup>
Pool	37,25 m <sup>2</sup>

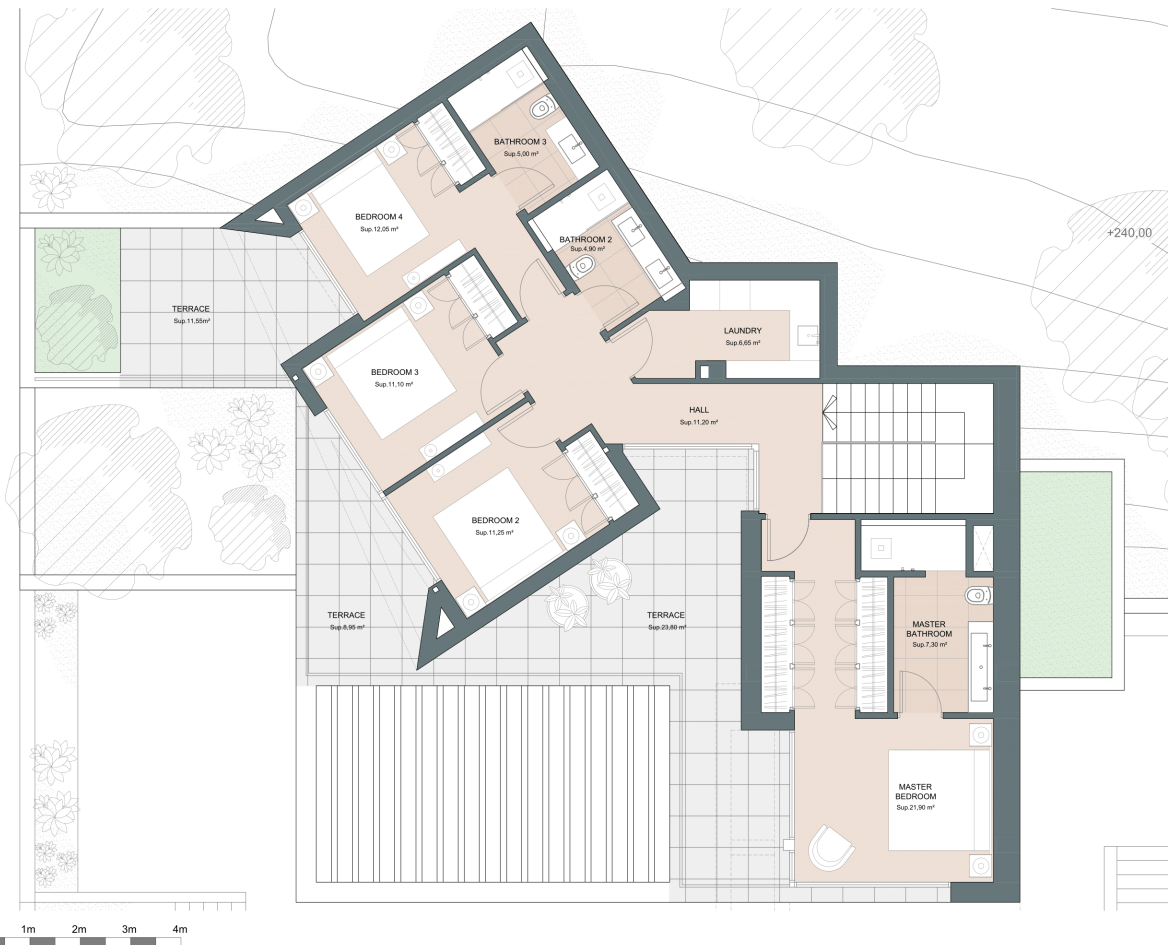
**Total built area 629,65 m<sup>2</sup>**

4      3      341,90 m<sup>2</sup>      3



This document is for information only. The areas and measurements are approximate and may be modified for technical reasons and/or administrative issues. The room areas marked on the drawing are usable space.







This document is for information only. The areas and measurements are approximate and may be modified for technical reasons and/or administrative issues. The room areas marked on the drawing are usable space.

Villa 2

Built closed area	341,90 m <sup>2</sup>
Covered terrace	41,05 m <sup>2</sup>
Open terrace	209,45 m <sup>2</sup>
Total terrace	250,50 m <sup>2</sup>
Pool	37,25 m <sup>2</sup>

**Total built area 629,65 m<sup>2</sup>**

 4   
  3   
  341,90 m<sup>2</sup>   
  3

