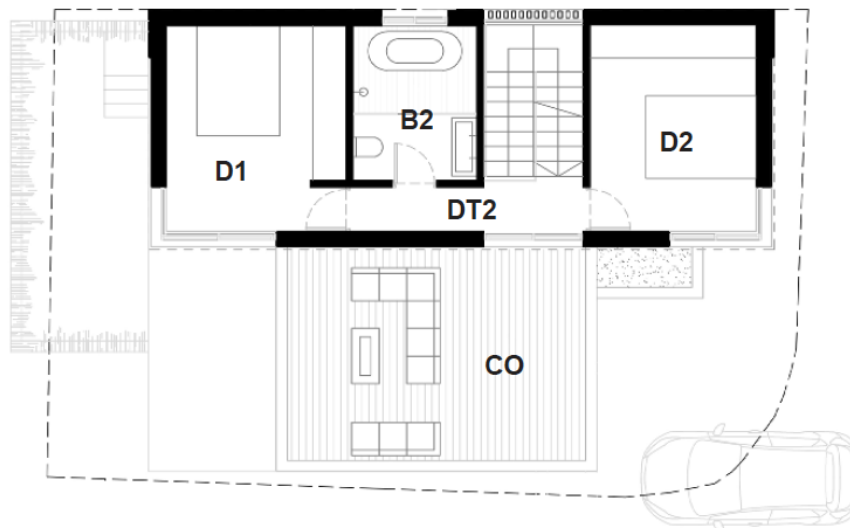
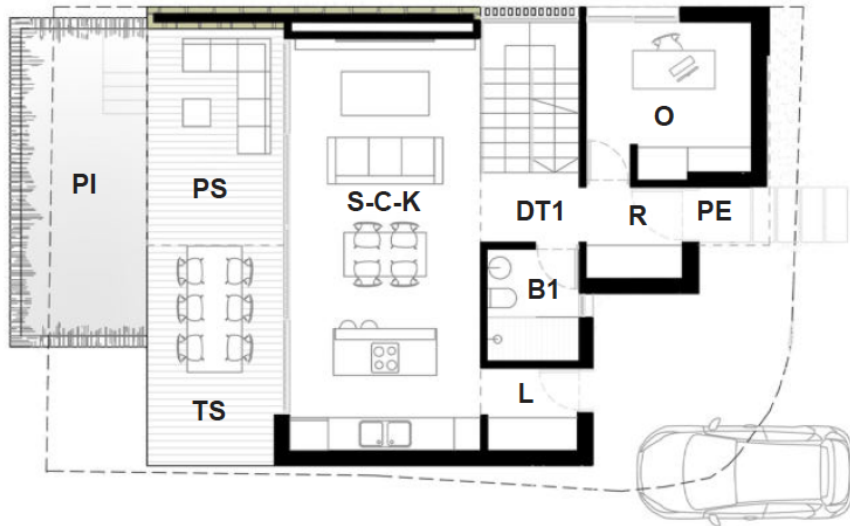




04. Plan of the property

Property Summary



SUPERFICIES ÚTILES

PE-Porche entrada	1.52 m2
R-Recibidor.	3.20 m2
DT1-Distribuidor 1.	7.42 m2
SCK-Salón-Comedor-Cocina.	26.19 m2
TS PS Terraza Porche salón.	19.75 m2
O-Oficina.	8.44 m2
B1-Baño 1.	3.48 m2
L-Lavandería.	2.64 m2
PI-Piscina.	15.00 m2
D1-Dormitorio 1.	12.06 m2
DT2-Distribuidor 2.	8.96 m2
D2-Dormitorio 2.	11.31 m2
B2-Baño 2.	6.31 m2
CO-Chill Out	20.94 m2

Total útiles. 90 m2

Total construida 112 m2

Total terrazas y porches. 43 m2