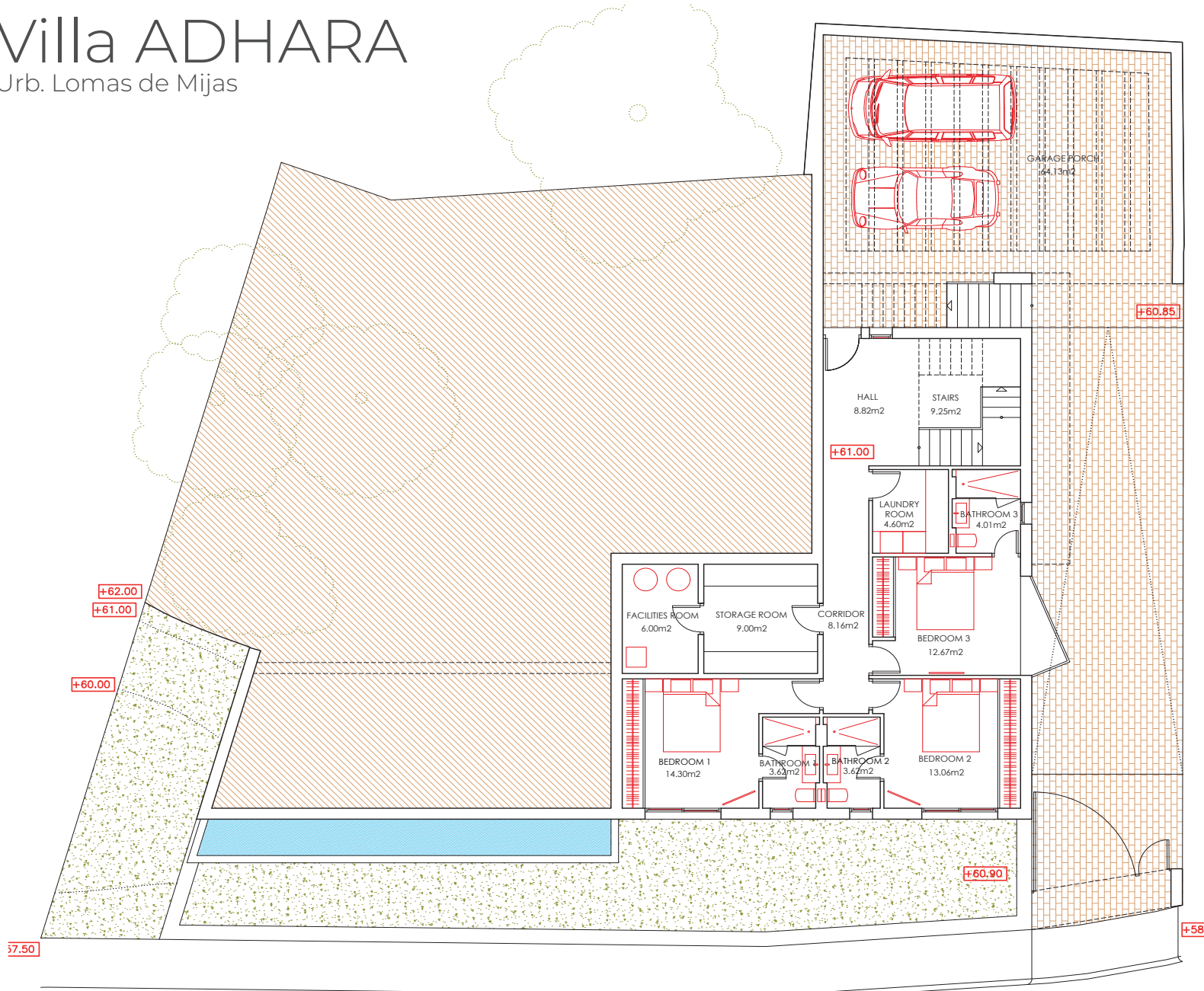


Villa ADHARA

Urb. Lomas de Mijas

Costa del Sol. Costa del Golf



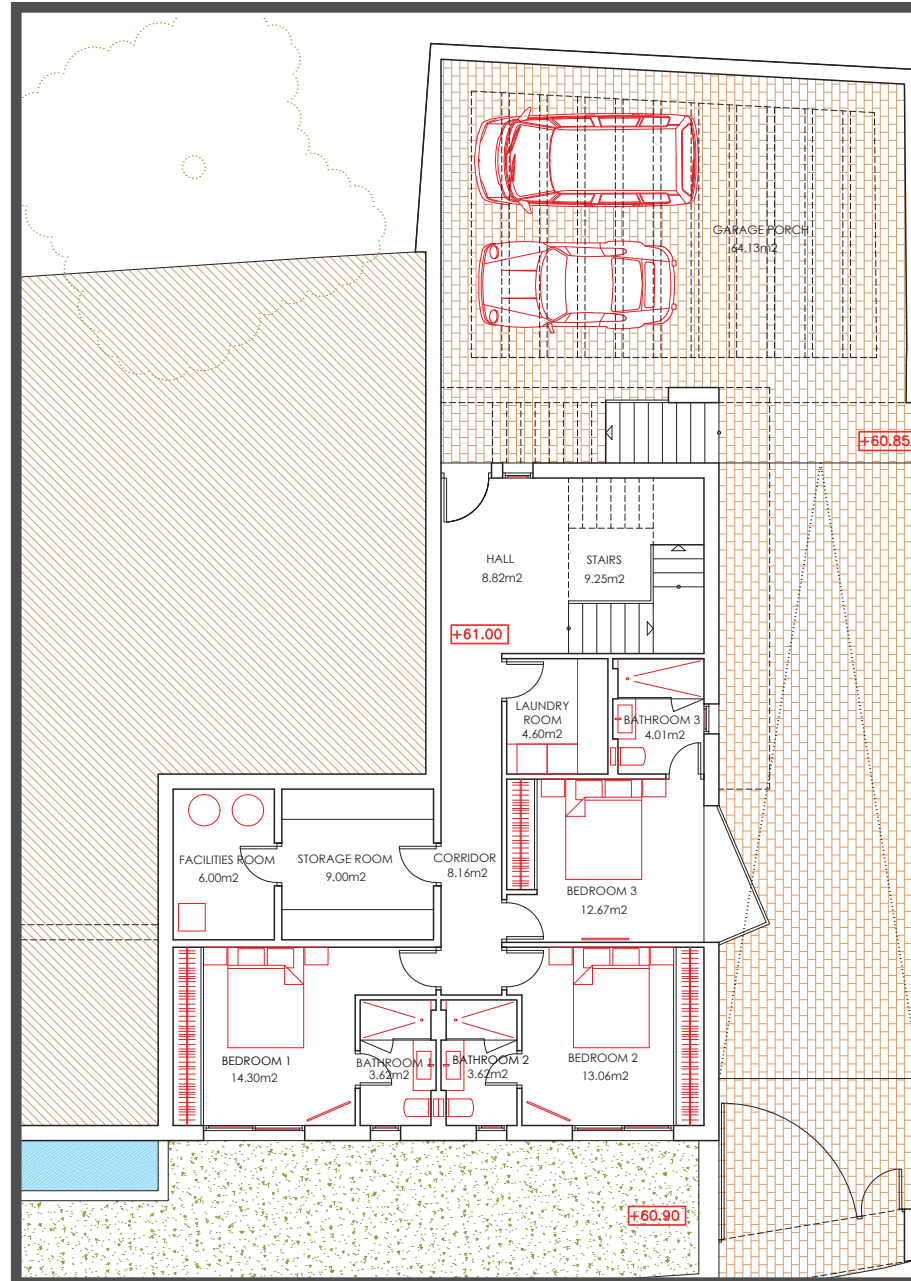
GROUND FLOOR

Constructed area: 118,37 m²
Covered terraces: 64,13 m²

Villa ADHARA

Urb. Lomas de Mijas

Costa del Sol. Costa del Golf



GROUND FLOOR

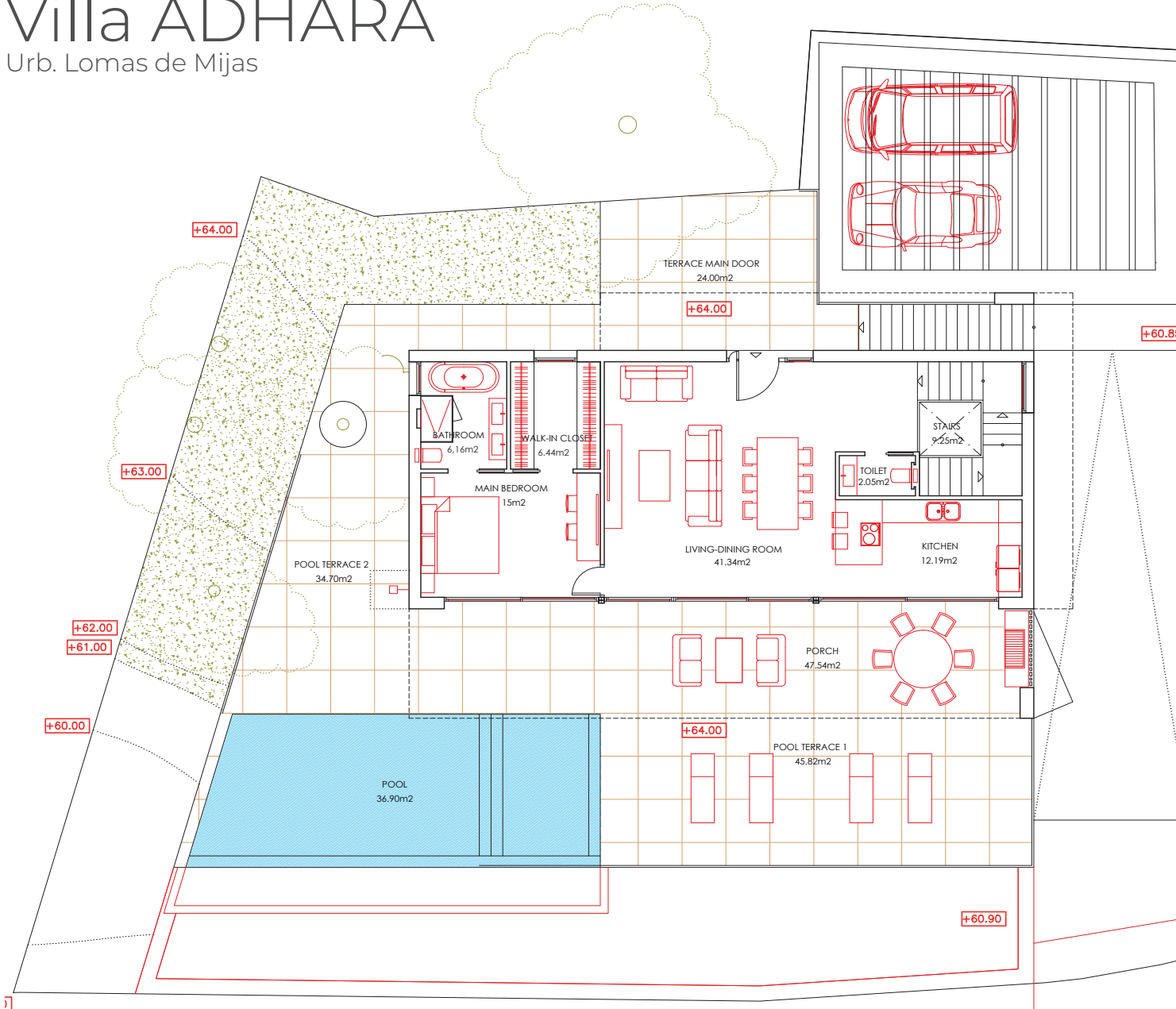
Constructed area: 118,37 m²
Covered terraces: 64,13 m²

(Enlarged)

Villa ADHARA

Urb. Lomas de Mijas

Costa del Sol. Costa del Golf



TOP FLOOR (Main floor)

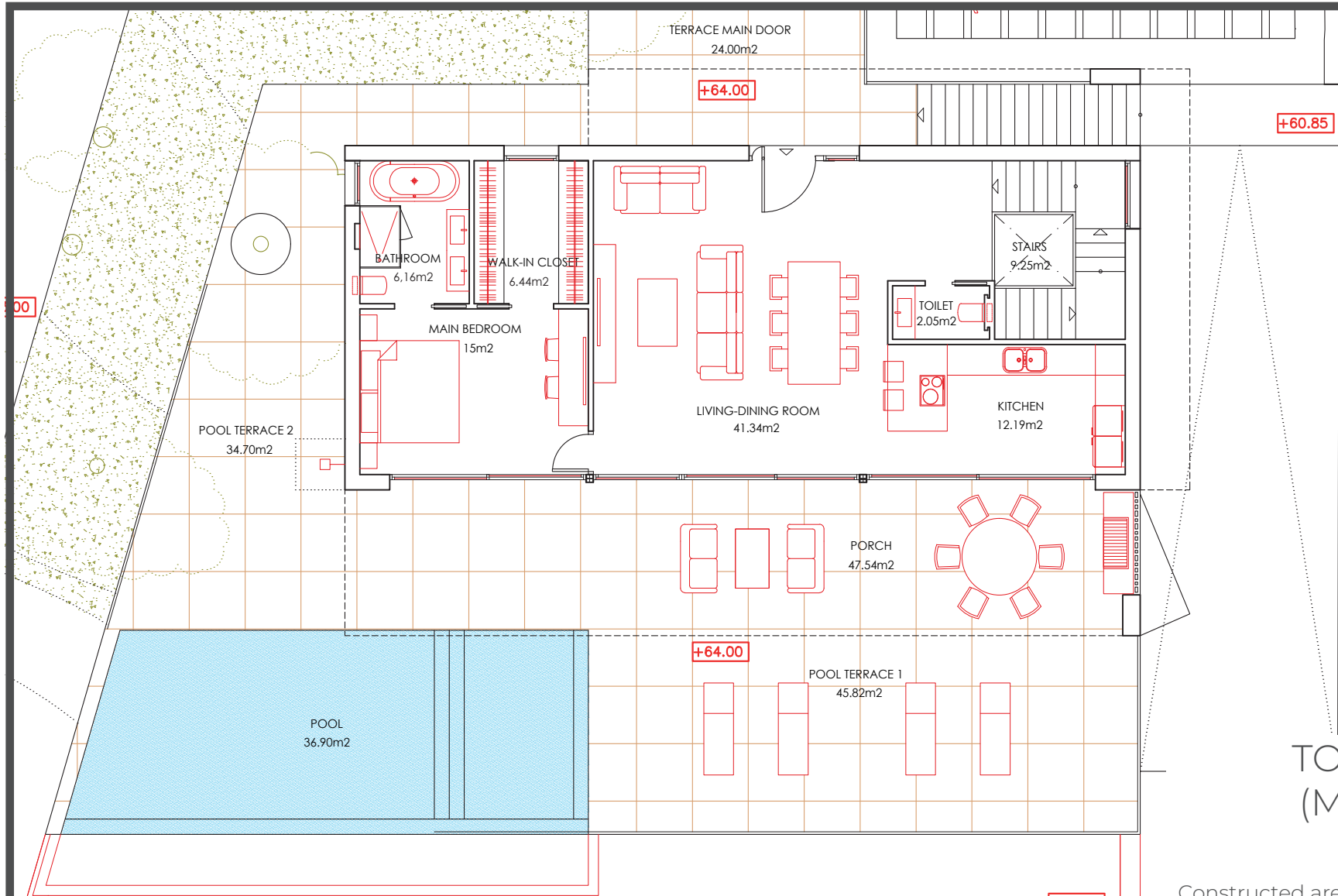
Constructed area:
Covered terraces:

108,00 m²
64,19 m²

Villa ADHARA

Urb. Lomas de Mijas

Costa del Sol. Costa del Golf



TOP FLOOR
(Main floor)

(Enlarged)

Constructed area: 108,00 m²
Covered terraces: 64,19 m²