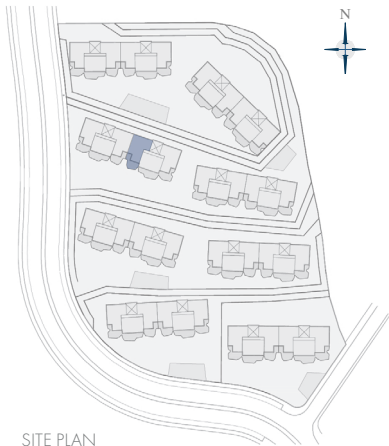


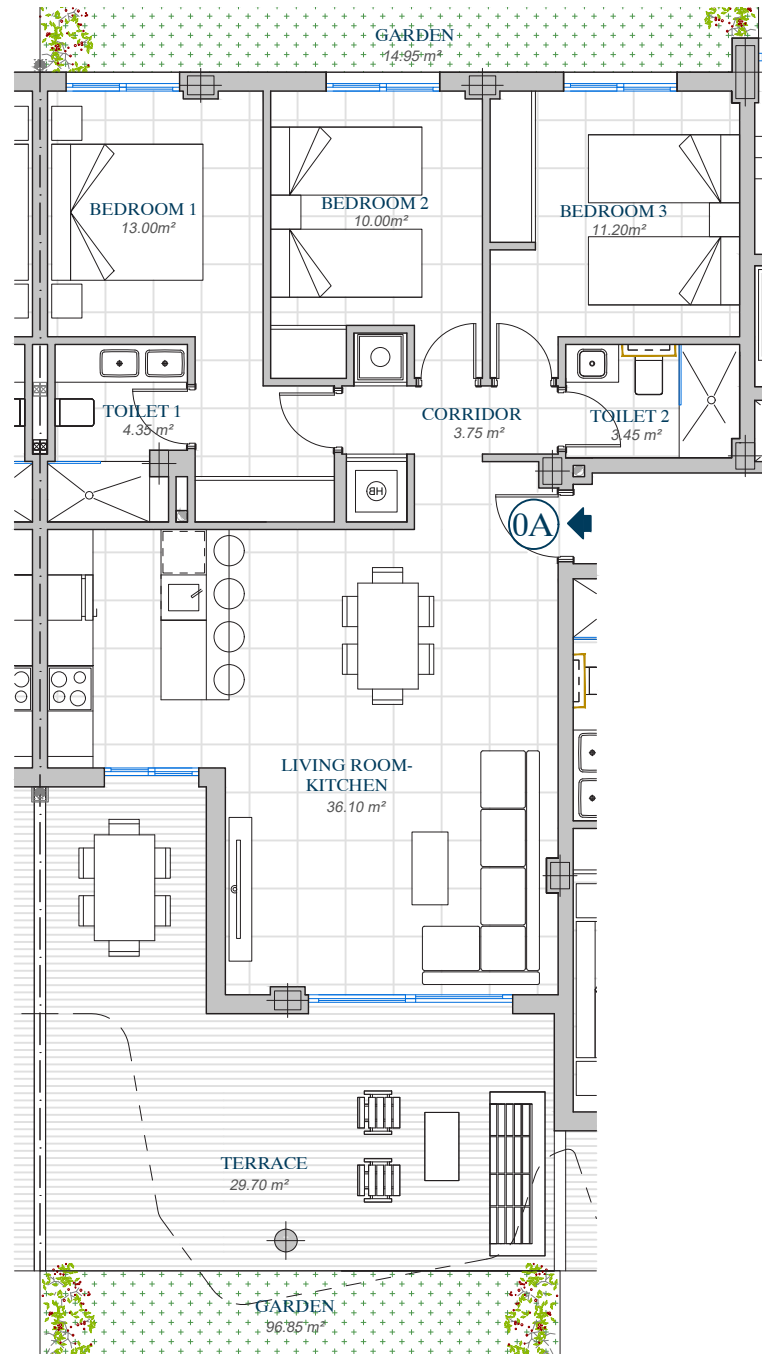


LOMAS DEL
HIGUERÓN

PORTAL 6
APARTMENT N° 51
0 A



SITE PLAN



BUILT AREA

Living Area	92,40 m ²
Terrace Area	29,70 m ²
Garden	111,80 m ²
TOTAL BUILT AREA:	233,90 m²



GRAPHIC SCALE



"This plan may be modified according to the development of the Execution Project and the construction. It does not constitute a contractual document. The reflected furnishing is for decoration purposes only. The Project Management reserves the right to make the necessary changes for functional, esthetic and legal reasons that may occur, without implying a decrease in the quality of the construction".