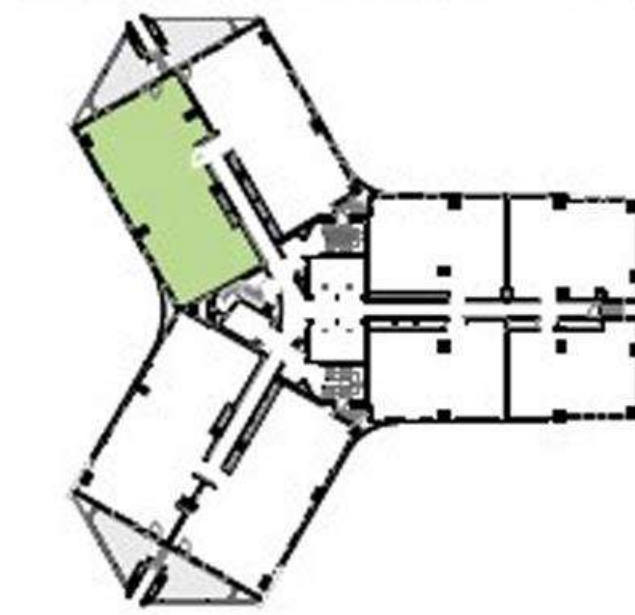
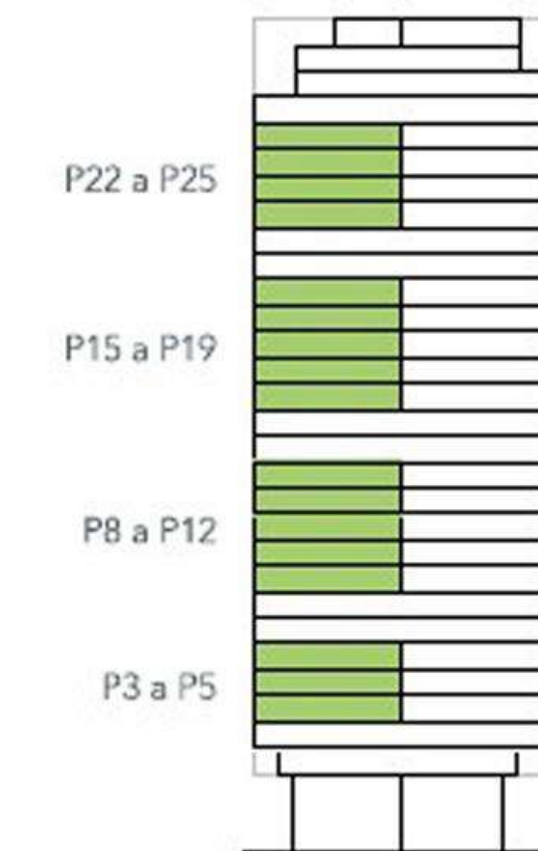




PARCELA RL-A del P.E.R.I. SUNC-R-R.5
 "Martiricos"
 Dos torres de viviendas y hotel.
 Paseo de Martiricos nº 30, Málaga.



TORRE 1 SUR
 W41 B
 4D



SUPERFICIES	m ²
Útil interior BOJA*	103,75
Útil interior	98,66
Útil exterior (terrace)	12,20
Construida (+ZZCC)**	154,49